



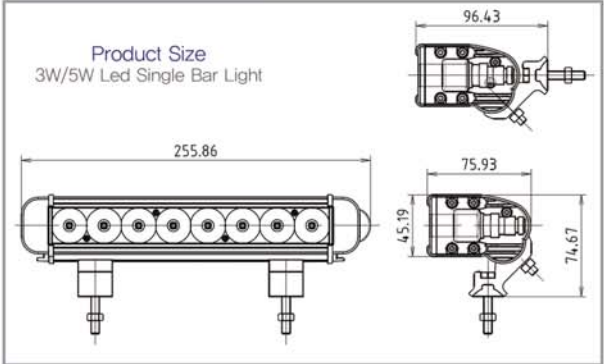
HPi PRODUCT RANGES

ARE YOU STILL LOOKING FOR LED/HID LIGHTINGS?
THEN WE WILL FIND A SOLUTION TO YOUR PROBLEM.



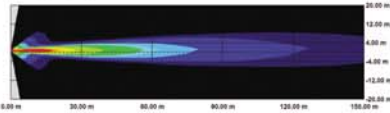
HP INTERNATIONAL CO.,LTD.

LED/HID Bar Light & LED/HID Search & Working Light

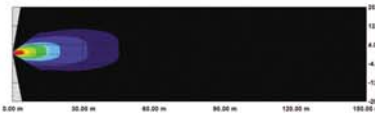


◆ BEAM PATTERN(8LED)

– SPOT



– FLOOD



– ELLIPTICAL



- 3 WATT** LEDs
- 5 WATT** LEDs
- BINDING**
- SEARCHWORKING**
- CE** CERTIFICATION
- OFFROAD**
- MARIN** UNDERWATER
- MILITARY** IR LED
- PATENT** CERTIFICATION

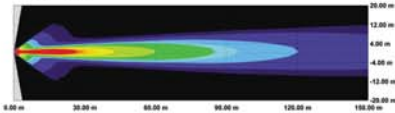
SPECIFICATION				INTRODUCTION			
1. OPERATING VOLTAGE : DC 9 ~ 32V 2. VIBRATION(G) : 8.6 3. WATER PROOF (IP68) & DUST RESISTANT 4. TEMPERATURE : -40°C ~ 50°C 5. LIFE SPAN : 50,000Hrs				1. 3W/5W LEDs : CREE 2. LENS : POLY CARBONATE / UV COATING 3. BODY : ALUMINUM(EFFICIENT HEAT DISSIPATION) 4. REFLECTOR : PC / VACUUM METALIZED 5. BRACKET : BILLET CLAMP TUBE MOUNTING AVAILABLE 6. WEATHERPROOF DEUTSCH CONNECTOR			
NO. OF LED (PCS)	RUNNING AMP DRAW(A) DC12V		LENGTH(mm)	WEIGHT(Kg)	LUMINOUS FLUX(lm) (700/1,500mA)		
	3W	5W					
4P	0.6	0.85	154.2	0.60	800	1,800	
8P	1.4	1.7	255.8	1.15	1,600	3,600	
12P	1.74	2.6	357.4	1.55	2,400	5,400	
16P	2.34	3.5	459.0	1.94	3,200	7,200	
20P	2.94	4.4	560.6	2.42	4,000	9,000	
24P	3.54	5.3	662.2	2.90	4,800	10,800	
28P	4.08	6.2	763.8	3.33	5,600	12,600	
32P	4.64	7.1	865.4	3.73	6,400	14,400	
36P	5.24	8.0	967.0	4.13	7,200	16,200	

■ THE LENGTH IS ADJUSTABLE ACCORDING TO BUYER'S OPTION.



◆ BEAM PATTERN(20LED)

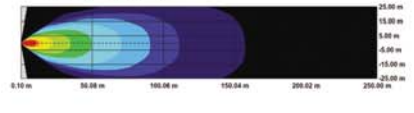
— SPOT



— FLOOD

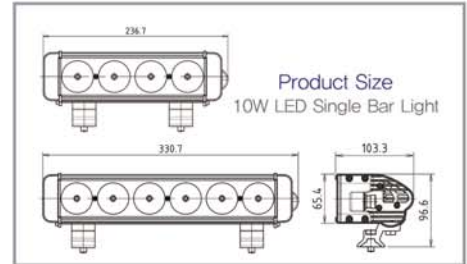


— ELLIPTICAL



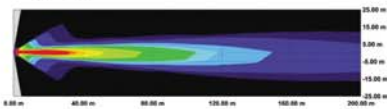
NO. OF LED (PCS)	RUNNING AMP DRAW(A) DC12V		LENGTH(mm)	WEIGHT(Kg)	LUMINOUS FLUX(lm) (700/1,500mA)	
	3W	5W			800	1,800
4P	0.6	0.9	99.0	1.2	800	1,800
8P	1.2	1.8	150.0	1.7	1,600	3,600
12P	1.8	2.7	201.0	2.0	2,400	5,400
20P	3.0	4.5	303.0	2.8	4,000	9,000
32P	4.8	7.4	455.0	3.5	6,400	14,400
40P	6.0	9.5	557.0	4.9	8,000	18,000
60P	9.4	14.0	811.0	6.9	12,000	27,000
80P	13.0	20.0	1,066.0	8.8	16,000	36,000
100P	16.6	25.5	1,320.0	10.8	20,000	45,000

■ THE LENGTH IS ADJUSTABLE ACCORDING TO BUYER'S OPTION.



◆ BEAM PATTERN(6LED)

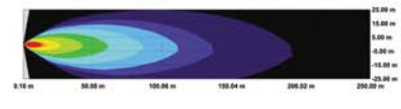
– SPOT



– FLOOD



– ELLIPTICAL



10
WATT

LEDV



MAKING



SEARCHING



PATENT



CERTIFICATION



OFFROAD



MARIN



UNDERWATER



MILITARY



W LED

CE

CERTIFICATION

SPECIFICATION

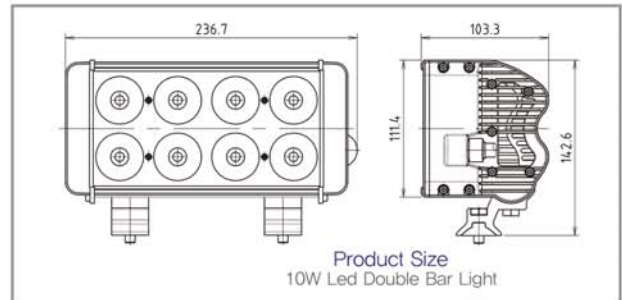
1. OPERATING VOLTAGE : DC 9 ~ 32V
2. VIBRATION(G) : 8.6
3. WATER PROOF (IP68) & DUST RESISTANT
4. TEMPERATURE : -40°C ~ 50°C
5. LIFE SPAN : 50,000Hrs

INTRODUCTION

1. 10W LEDs : CREE
2. LENS : POLY CARBONATE / UV COATING
3. BODY : ALUMINUM(EFFICIENT HEAT DISSIPATION)
4. REFLECTOR : PC / VACUUM METALIZED
5. BRACKET : BILLET CLAMP TUBE MOUNTING AVAILABLE
6. WEATHERPROOF DEUTSCH CONNECTOR

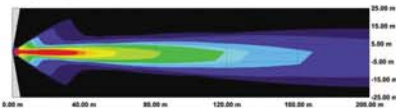
NO. OF LED (PCS)	RUNNING AMP DRAW(A) DC12V	LENGTH(mm)	WEIGHT(Kg)	LUMINOUS FLUX(lm) (2,800mA)
2P	1.1	142.6	1.0	1,800
4P	2.2	236.6	1.7	3,600
6P	3.38	330.6	2.3	5,400
8P	4.52	424.6	3.1	7,200
10P	5.74	518.6	3.8	9,000
12P	6.84	612.6	4.4	10,800
14P	8.06	706.6	5.1	12,600
16P	9.04	800.6	5.9	14,400
18P	10.4	894.6	6.5	16,200
20P	11.18	988.6	7.3	18,000
22P	12.1	1,082.0	8.1	19,800

■ THE LENGTH IS ADJUSTABLE ACCORDING TO BUYER'S OPTION.

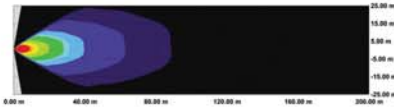


◆ BEAM PATTERN(12LED)

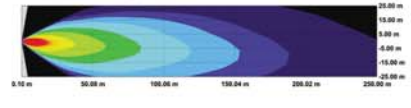
— SPOT



— FLOOD



— ELLIPTICAL



10 WATT

LEDs

MILITARY

SEARCHING

PATENT

CERTIFICATION

OFFROAD

MARIN

UNDERWATER

MILITARY

IR LED

SPECIFICATION

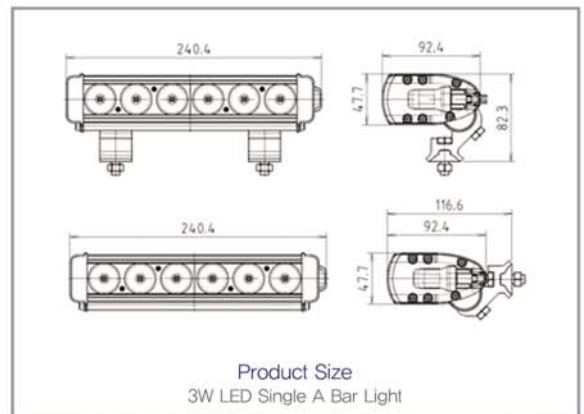
1. OPERATING VOLTAGE : DC 9 ~ 32V
2. VIBRATION(G) : 8.6
3. WATER PROOF (IP68) & DUST RESISTANT
4. TEMPERATURE : -40°C ~ 50°C
5. LIFE SPAN : 50,000Hrs

INTRODUCTION

1. 10W LEDs : CREE
2. LENS : POLY CARBONATE / UV COATING
3. BODY : ALUMINUM(EFFICIENT HEAT DISSIPATION)
4. REFLECTOR : PC / VACUUM METALIZED
5. BRACKET : BILLET CLAMP TUBE MOUNTING AVAILABLE
6. WEATHERPROOF DEUTSCH CONNECTOR

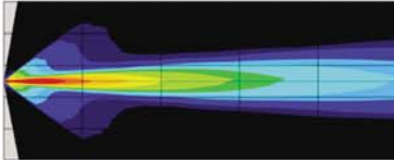
NO. OF LED (PCS)	RUNNING AMP DRAW(A) DC12V	LENGTH(mm)	WEIGHT(Kg)	LUMINOUS FLUX(lm) (2,800mA)
4P	1.9	142.6	1.4	3,600
8P	3.9	236.6	2.3	7,200
12P	5.8	330.6	3.2	10,800
16P	7.6	424.6	4.1	14,400
20P	9.6	518.6	5.0	18,000
24P	10.4	612.6	5.9	21,600
28P	12.8	706.6	6.8	25,200
32P	15.6	800.6	7.2	28,800
36P	17.6	894.6	8.1	32,400
40P	19.4	988.6	9.0	36,000

■ THE LENGTH IS ADJUSTABLE ACCORDING TO BUYER'S OPTION.

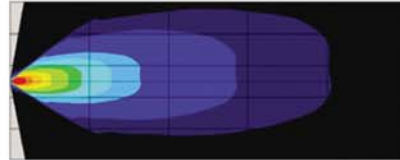


◆ BEAM PATTERN(8LED)

— SPOT



— FLOOD



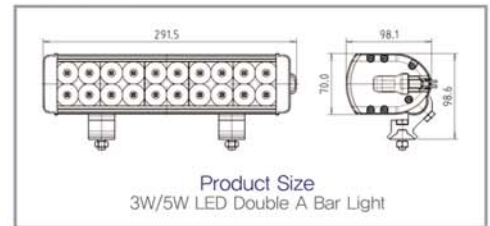
- 3 WATT** LED
- 5 WATT** LED
- BIKING**
- SEARCH/WORKING**
- OFFROAD**
- MARIN**
- UNDERWATER**
- MILITARY**
- IR LED**
- PATENT**
- CERTIFICATION**

SPECIFICATION	INTRODUCTION
---------------	--------------

- | | |
|---|---|
| <ol style="list-style-type: none"> 1. OPERATING VOLTAGE : DC 9 ~ 32V 2. VIBRATION(G) : 8.6 3. WATER PROOF (IP68) & DUST RESISTANT 4. TEMPERATURE : -40°C ~ 50°C 5. LIFE SPAN : 50,000Hrs 6. PROTECTION COVER. | <ol style="list-style-type: none"> 1. 3W/5W LEDs : CREE 2. LENS : POLY CARBONATE / UV COATING 3. BODY : ALUMINUM(EFFICIENT HEAT DISSIPATION) 4. REFLECTOR : PC / VACUUM METALIZED 5. BRACKET : BILLET CLAMP TUBE MOUNTING AVAILABLE 6. WEATHERPROOF DEUTSCH CONNECTOR |
|---|---|

LED QUANTITY	RUNNING AMP DRAW(A) DC12V		LENGTH(mm)	WEIGHT(Kg)	LUMINOUS FLUX(lm) (700/1,500mA)	
	3W	5W				
3P	0.6	1.2	138.8	1.12	800	1,200
6P	1.0	2.4	240.4	1.76	1,600	2,400
9P	1.6	3.6	342.0	2.40	2,400	3,600
12P	2.1	4.8	443.6	3.04	3,200	4,800
15P	2.6	6.0	545.2	3.68	4,000	6,000
18P	3.2	7.2	646.8	4.32	4,800	7,200
21P	3.8	8.4	748.4	4.96	5,600	8,400
24P	4.4	9.6	850.0	5.60	6,400	9,600
27P	5.0	10.8	951.6	6.24	7,200	10,800

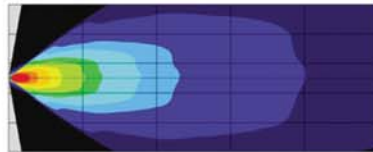
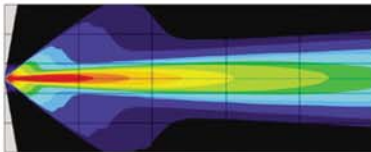
■ THE LENGTH IS ADJUSTABLE ACCORDING TO BUYER'S OPTION.



◆ BEAM PATTERN(20LED)

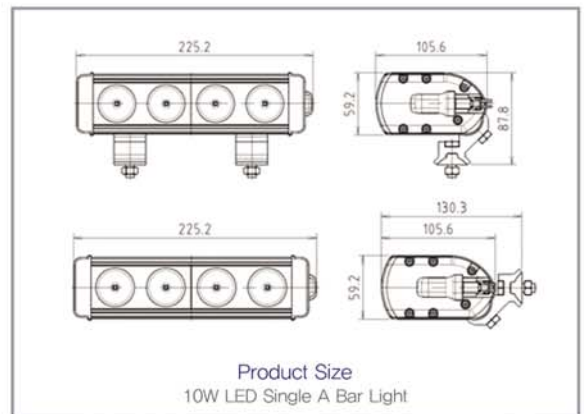
– SPOT

– FLOOD



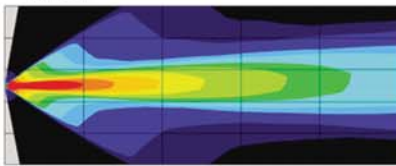
LED QUANTITY	RUNNING AMP DRAW(A) DC12V		LENGTH(mm)	WEIGHT(Kg)	LUMINOUS FLUX(lm) (700/1,500mA)	
	3W	5W			800	1,600
4P	0.5	0.5	87.9	0.83	800	1,600
8P	1.1	1.1	138.9	1.43	1,600	3,200
12P	1.5	1.5	162.7	2.03	2,400	4,800
20P	2.2	2.2	291.5	2.63	4,000	8,000
32P	3.7	3.7	444.2	4.43	6,400	12,800
40P	4.3	4.3	545.9	5.63	8,000	16,000
60P	6.7	6.7	793.4	8.63	12,000	24,000
80P	9.0	9.0	1054.8	11.63	16,000	32,000
100P	11.2	11.2	1309.2	14.63	20,000	40,000
140P	15.6	15.6	1818.1	20.63	28,000	56,000

■ THE LENGTH IS ADJUSTABLE ACCORDING TO BUYER'S OPTION.

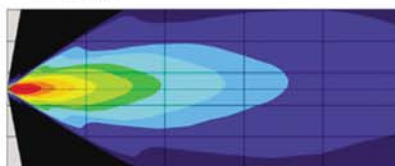


◆ BEAM PATTERN(6LED)

– SPOT



– FLOOD



- 10 WATT** LED
- MINING
- SEARCH & MINING
- OFFROAD
- MARINE
- UNDERWATER
- MILITARY
- IR LED
- PATENT
- CERTIFICATION

SPECIFICATION

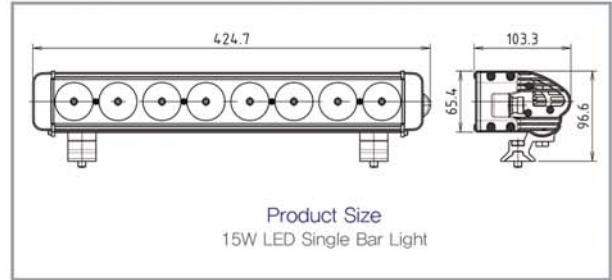
1. OPERATING VOLTAGE : DC 9 ~ 32V
2. VIBRATION(G) : 8.6
3. WATER PROOF (IP68) & DUST RESISTANT
4. TEMPERATURE : -40°C ~ 50°C
5. LIFE SPAN : 50,000Hrs
6. PROTECTION COVER.

INTRODUCTION

1. 10W LEDs : CREE
2. LENS : POLY CARBONATE / UV COATING
3. BODY : ALUMINUM(EFFICIENT HEAT DISSIPATION)
4. REFLECTOR : PC / VACUUM METALIZED
5. BRACKET : BILLET CLAMP TUBE MOUNTING AVAILABLE
6. WEATHERPROOF DEUTSCH CONNECTOR

LED QUANTITY	RUNNING AMP DRAW(A) DC12V	LENGTH(mm)	WEIGHT(Kg)	LUMINOUS FLUX(lm) (2,800mA)
2P	1.13	132.2	1.3	1,800
4P	2.26	225.2	2.3	3,600
6P	3.39	319.2	3.3	5,400
8P	4.52	413.2	4.3	7,200
10P	5.65	507.2	5.3	9,000
12P	6.78	601.2	6.3	10,800
14P	7.91	695.2	7.3	12,600
16P	9.04	789.2	8.3	14,400
18P	10.17	883.2	9.3	16,200
20P	11.3	977.2	10.3	18,000
22P	12.43	1,071.2	11.3	19,800

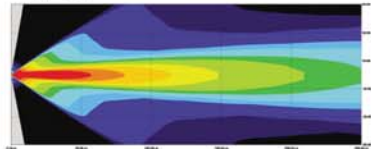
■ THE LENGTH IS ADJUSTABLE ACCORDING TO BUYER'S OPTION.



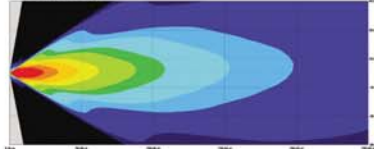
◆ BEAM PATTERN(8LED)

THERMAL CONTROL OF LED CURRENT / TEMPERATURE T=+70°C

— SPOT



— FLOOD



15 WATT

- LEDx
- WORKING
- SEARCH/WORKING
- PATENT
- CERTIFICATION
- OFFROAD
- MARIN
- UNDERWATER
- MILITARY
- IR LED

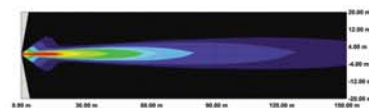
SPECIFICATION		INTRODUCTION			
1. OPERATING VOLTAGE : DC 9 ~ 32V 2. VIBRATION(G) : 8.6 3. WATER PROOF (IP68) & DUST RESISTANT 4. TEMPERATURE : -40°C ~ 50°C 5. LIFE SPAN : 50,000Hrs		1. 15W LEDs : CREE 2. LENS : POLY CARBONATE / UV COATING 3. BODY : ALUMINUM(EFFICIENT HEAT DISSIPATION) 4. REFLECTOR : PC / VACUUM METALIZED 5. BRACKET : BILLET CLAMP TUBE MOUNTING AVAILABLE 6. WEATHERPROOF DEUTSCH CONNECTOR			
NO. OF LED (PCS)	RUNNING AMP DRAW(A) DC12V	LENGTH(mm)	WEIGHT(Kg)	LUMINOUS FLUX(lm) (11.7V/1.25A)	
2P	1.75	142.6	1.5	2,400	
4P	3.50	236.6	2.2	4,800	
6P	5.25	330.6	2.8	7,200	
8P	7.00	424.6	3.6	9,600	
10P	8.75	518.6	4.3	12,000	
12P	10.50	612.6	4.9	14,400	
14P	12.25	706.6	5.6	16,800	
16P	14.00	800.6	6.4	19,200	
18P	15.75	894.6	7.0	21,600	
20P	17.50	988.6	7.8	24,000	
22P	19.25	1,082.0	8.6	26,400	

■ THE LENGTH IS ADJUSTABLE ACCORDING TO BUYER'S OPTION.

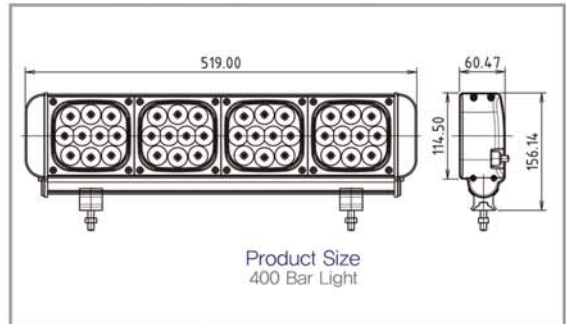


◆ BEAM PATTERN(1P)

– SPOT



– FLOOD



- 3 WATT**
- LEDs
- Mining
- Offroad
- MARIN
- Underwater
- MILITARY
- IR LED
- DESIGN
- CERTIFICATION

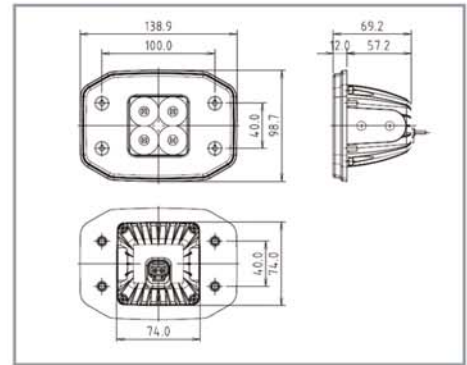
SPECIFICATION	INTRODUCTION
1. OPERATING VOLTAGE : DC 9 ~ 32V 2. VIBRATION(G) : 8.6 3. WATER PROOF (IP68) & DUST RESISTANT 4. TEMPERATURE : -40°C ~ 50°C 5. LIFE SPAN : 50,000Hrs	1. 3W LEDs : CREE 2. LENS : POLY CARBONATE / UV COATING 3. BODY : : ALUMINUM(EFFICIENT HEAT DISSIPATION) 4. REFLECTOR : PC / VACUUM METALIZED 5. BRACKET : BILLET CLAMP TUBE MOUNTING AVAILABLE 6. WEATHERPROOF DEUTSCH CONNECTOR

NO. OF LED (PCS)	RUNNING AMP DRAW(A) DC12V	LENGTH(mm)	WEIGHT(Kg)	LUMINOUS FLUX(lm) (700mA)
1P	1.0	174.0	1.35	2,000
2P	2.0	289.0	2.28	4,000
3P	3.0	404.0	3.21	6,000
4P	4.0	519.0	4.14	8,000
5P	5.0	634.0	5.07	10,000
6P	6.0	749.0	6.93	12,000
7P	7.0	864.0	7.86	14,000
8P	8.0	979.0	8.79	16,000
9P	9.0	1,094.0	9.72	18,000
10P	10.0	1,209.0	10.65	20,000

■ THE LENGTH IS ADJUSTABLE ACCORDING TO BUYER'S OPTION.



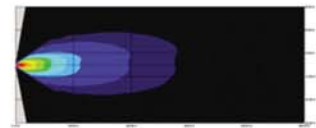
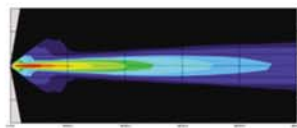
5W Search & Working Light
FM4



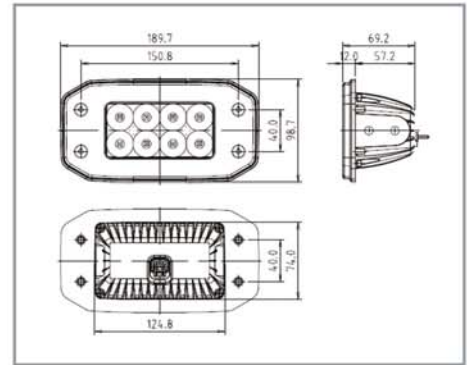
◆ BEAM PATTERN

— SPOT

— FLOOD



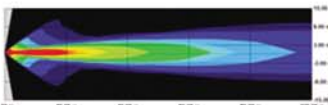
5W Search & Working Light
FM8



◆ BEAM PATTERN

— SPOT

— FLOOD



SPECIFICATION

1. OPERATING VOLTAGE : DC 9 ~ 32V
2. VIBRATION(G) : 8,6
3. WATER PROOF (IP68) & DUST RESISTANT
4. TEMPERATURE : -40°C ~ 50°C
5. LIFE SPAN : 50,000Hrs
6. BUILT INPUT CONNECTOR IN BODY

INTRODUCTION

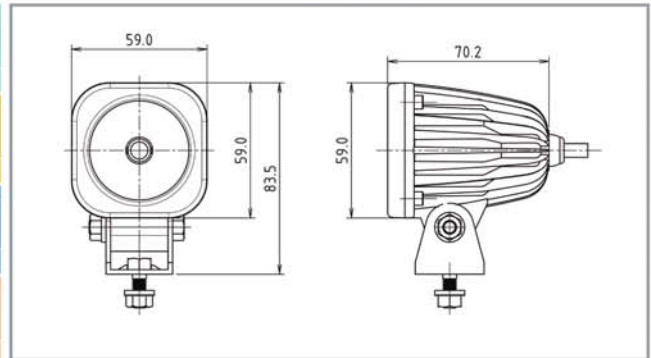
1. 5W LEDs : CREE
2. LENS : POLY CARBONATE / UV COATING
3. BODY : ALUMINUM(EFFICIENT HEAT DISSIPATION)
4. REFLECTOR : PC / VACUUM METALIZED
5. WEATHERPROOF DEUTSCH CONNECTOR

MODEL	RUNNING AMP DRAW(A) DC12V	WEIGHT(g)	LUMINOUS FLUX(lm) (1,500mA)	REMARK
FM4	0.90	1.1	1,800	
FM8	1.8	1.56	3,600	



10W Search & Working Light LED 110

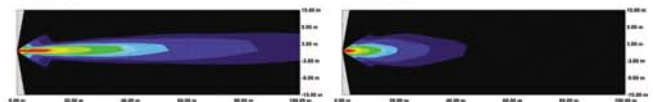
10 WATT	
LEDs	OFFROAD
	MARIN
MARINE	UNDERWATER
	MILITARY
SEARCH/WORKING	IR LED
	DESIGN
CERTIFICATION	



◆ BEAM PATTERN

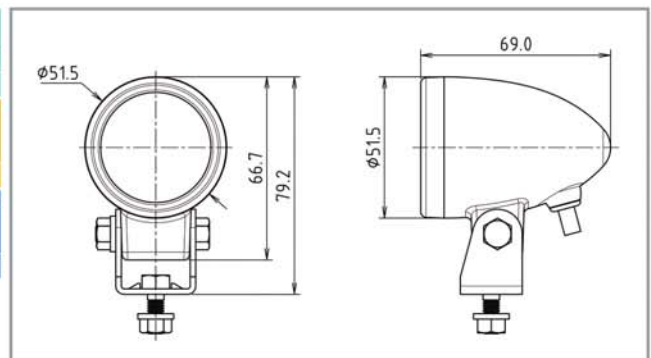
– SPOT

– FLOOD



10W Search & Working Light LED 120

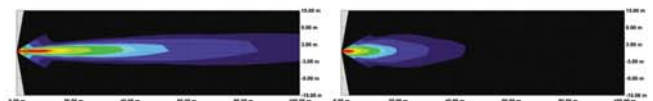
10 WATT	
LEDs	OFFROAD
	MARIN
MARINE	UNDERWATER
	MILITARY
SEARCH/WORKING	IR LED
	DESIGN
CERTIFICATION	



◆ BEAM PATTERN

– SPOT

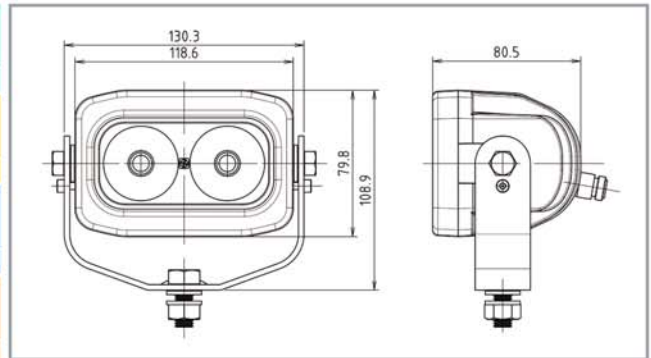
– FLOOD





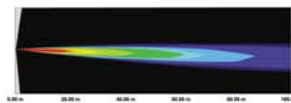
10W Search & Working Light LED 210

10 WATT	
LEDs	OFFROAD
	MARIN
MINING	UNDERWATER
	MILITARY
SEARCH&WORKING	IR LED
	DESIGN
CERTIFICATION	CERTIFICATION

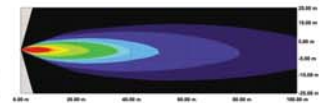


◆ BEAM PATTERN

– SPOT

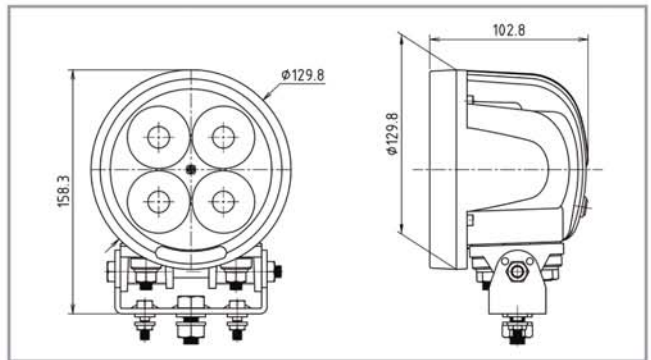


– FLOOD



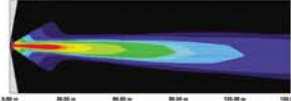
10W Search & Working Light LED 410

10 WATT	
LEDs	OFFROAD
	MARIN
MINING	UNDERWATER
	MILITARY
SEARCH&WORKING	IR LED
	PATENT
CERTIFICATION	DESIGN
	CERTIFICATION



◆ BEAM PATTERN

– SPOT

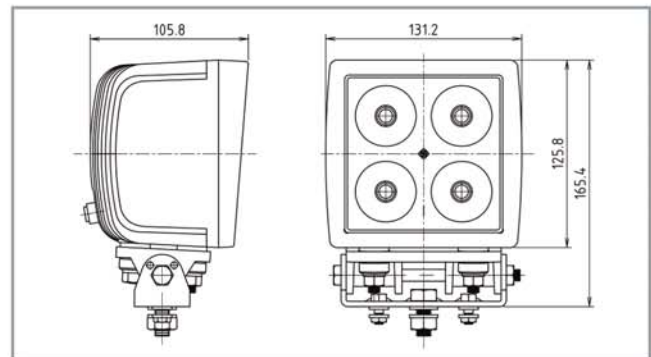


– FLOOD



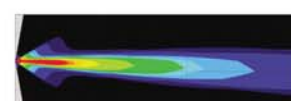
10W Search & Working Light LED 510

10 WATT	
LEDs	OFFROAD
	MARIN
MINING	UNDERWATER
	MILITARY
SEARCH&WORKING	IR LED



◆ BEAM PATTERN

– SPOT



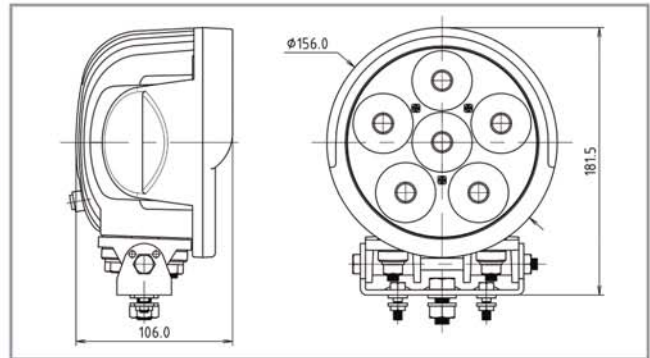
– FLOOD



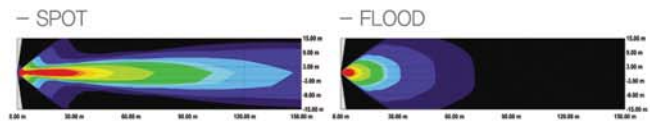


10W Search & Working Light
LED 610

10 WATT	
LEDs	OFFROAD
	MARIN
MIRING	UNDERWATER
	MILITARY
SEARCH/WORKING	IR LED
PATENT	DESIGN
CERTIFICATION	CERTIFICATION

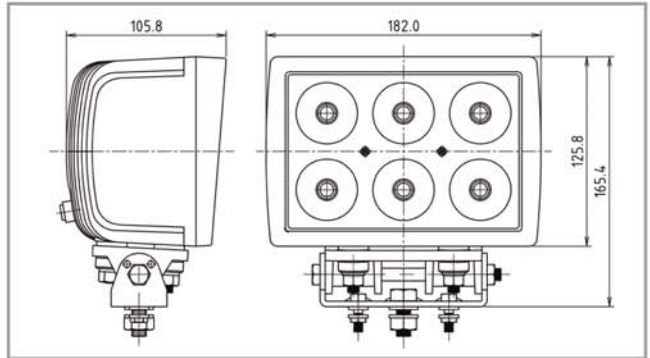


BEAM PATTERN

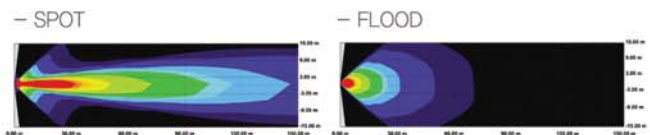


10W Search & Working Light
LED 710

10 WATT	
LEDs	OFFROAD
	MARIN
MIRING	UNDERWATER
	MILITARY
SEARCH/WORKING	IR LED
PATENT	DESIGN
CERTIFICATION	CERTIFICATION



BEAM PATTERN



SPECIFICATION

1. OPERATING VOLTAGE : DC 9 ~ 32V
2. VIBRATION(G) : 8.6
3. WATER PROOF (IP68) & DUST RESISTANCE
4. TEMPERATURE : -40°C ~ 50°C
5. LIFE SPAN : 50,000Hrs

INTRODUCTION

1. 10W LEDs : CREE
2. LENS : POLY CARBONATE / UV COATING
3. BODY : : ALUMINUM(EFFICIENT HEAT DISSIPATION)
4. REFLECTOR : PC / VACUUM METALIZED
5. BRACKET : STAINLESS STEEL
6. WEATHERPROOF DEUTSCH CONNECTOR

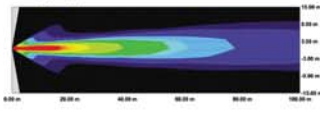
MODEL	NO. OF LED (PCS)	RUNNING AMP DRAW(A) DC12V	WEIGHT(Kg)	LUMINOUS FLUX(lm) (2,800mA)
LED110	1	0.46	0.6	900
LED120	1	0.46	0.32	900
LED210	2	0.96	1.4	1,800
LED410	4	2.60	1.8	3,600
LED510	4	2.60	2.9	3,600
LED610	6	2.92	2.9	5,400
LED710	6	3.40	3.2	5,400



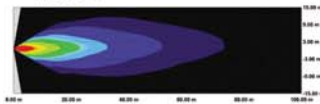
◆ BEAM PATTERN



– SPOT



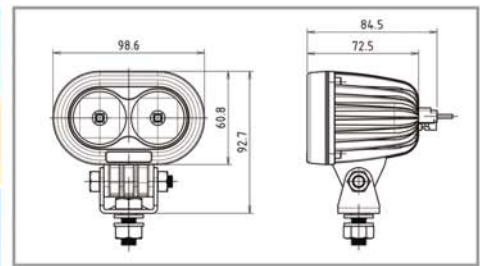
– FLOOD



10W Search & Working Light
LED 220

10 WATT

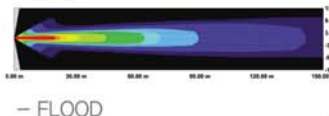
- LEDs
- OFFROAD
- MARIN
- MILITARY
- SEARCH&WORKING
- DESIGN
- IR LED
- CERTIFICATION



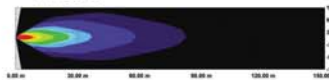
◆ BEAM PATTERN



– SPOT



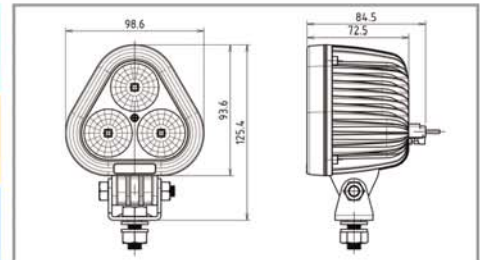
– FLOOD



10W Search & Working Light
LED 310

10 WATT

- LEDs
- OFFROAD
- MARIN
- MILITARY
- SEARCH&WORKING
- DESIGN
- IR LED
- CERTIFICATION



SPECIFICATION

1. OPERATING VOLTAGE : DC 9 ~ 32V
2. VIBRATION(G) : 8,6
3. WATER PROOF (IP68) & DUST RESISTANT
4. TEMPERATURE : -40°C ~ 50°C
5. LIFE SPAN : 50,000hrs
6. BUILT INPUT CONNECTOR IN BODY

INTRODUCTION

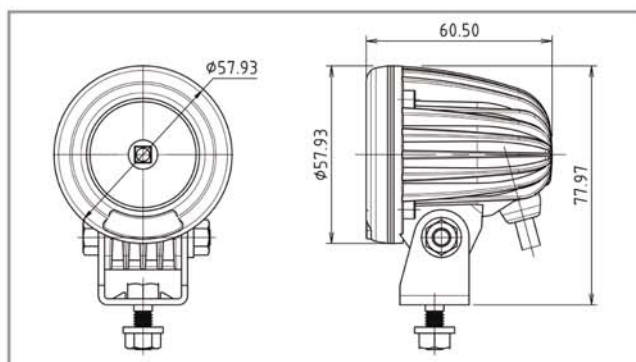
1. 10W LEDs : CREE
2. LENS : POLY CARBONATE / UV COATING
3. BODY : ALUMINUM(EFFICIENT HEAT DISSIPATION)
4. REFLECTOR : PC / VACUUM METALIZED
5. BRACKET : STAINLESS STEEL
6. WEATHERPROOF DEUTSCH CONNECTOR

MODEL	NO. OF LED (PCS)	RUNNING AMP DRAW(A) DC12V	WEIGHT(Kg)	LUMINOUS FLUX(lm) (2,800mA)
LED 220	2	1.0	0,50	1,800
LED 310	3	1,3	0,64	2,700



10W Search & Working Light P1

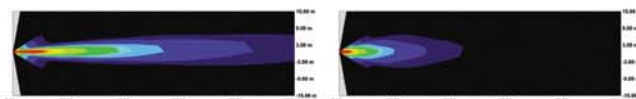
10 WATT	
LEDs	OFFROAD
	MARIN
MARINE	UNDERWATER
	MILITARY
SEARCH/WORKING	IR LED
CE	DESIGN
CERTIFICATION	CERTIFICATION



◆ BEAM PATTERN

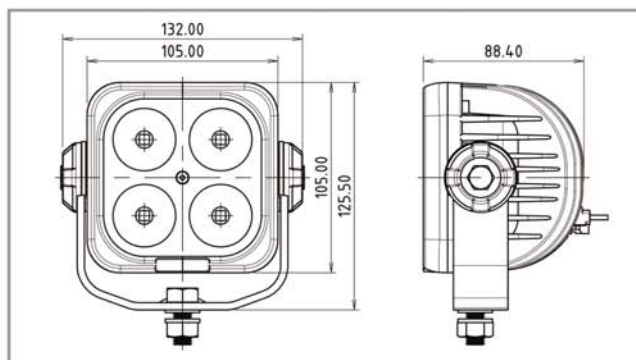
– SPOT

– FLOOD



10W Search & Working Light P4

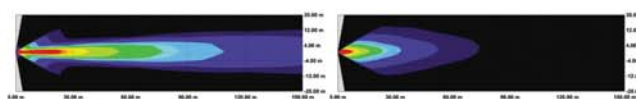
10 WATT	
LEDs	OFFROAD
	MARIN
MARINE	UNDERWATER
	MILITARY
SEARCH/WORKING	IR LED
PATENT	DESIGN
CERTIFICATION	CERTIFICATION
CE	
CERTIFICATION	



◆ BEAM PATTERN

– SPOT

– FLOOD

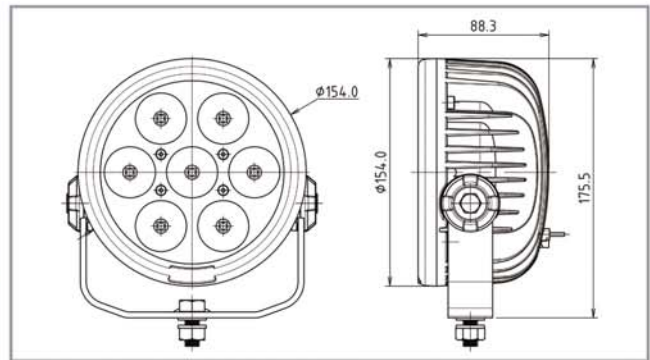




10W Search & Working Light P7

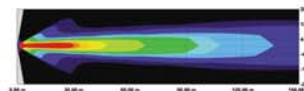
10 WATT

- LEDs
- OFFROAD
- MARIN
- MIND
- UNDERWATER
- MILITARY
- IR LED
- SEARCH/WORKING
- DESIGN
- CERTIFICATION

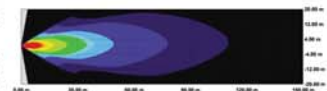


◆ BEAM PATTERN

– SPOT



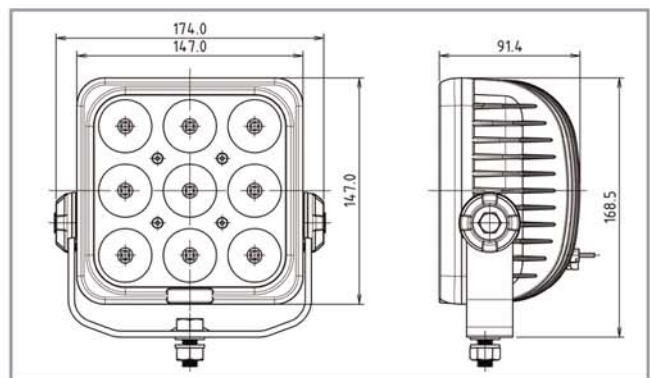
– FLOOD



10W Search & Working Light P9

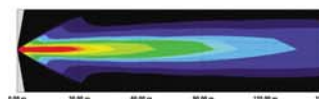
10 WATT

- LEDs
- OFFROAD
- MARIN
- MIND
- UNDERWATER
- MILITARY
- IR LED
- SEARCH/WORKING
- DESIGN
- CERTIFICATION

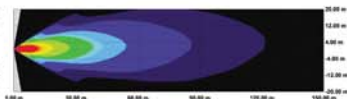


◆ BEAM PATTERN

– SPOT



– FLOOD



SPECIFICATION

1. OPERATING VOLTAGE : DC 9 ~ 32V
2. VIBRATION(G) : 8,6
3. WATER PROOF (IP68) & DUST RESISTANT
4. TEMPERATURE : -40°C ~ 50°C
5. LIFE SPAN : 50,000Hrs
6. BUILT INPUT CONNECTOR IN BODY

INTRODUCTION

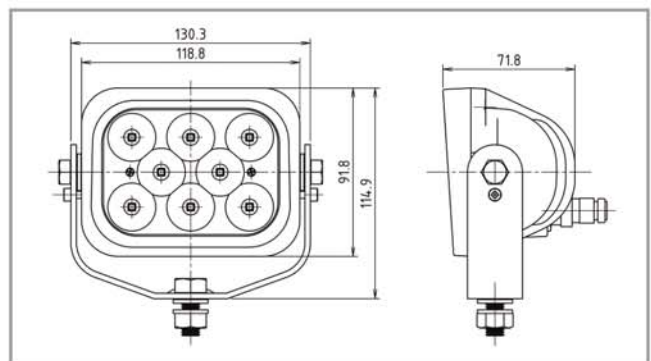
1. 10W LEDs : CREE
2. LENS : POLY CARBONATE / UV COATING
3. BODY : ALUMINUM(EFFICIENT HEAT DISSIPATION)
4. REFLECTOR : PC / VACUUM METALIZED
5. BRACKET : STAINLESS STEEL
6. WEATHERPROOF DEUTSCH CONNECTOR

MODEL	NO. OF LED (PCS)	RUNNING AMP DRAW(A) DC12V	WEIGHT(Kg)	LUMINOUS FLUX(lm) (2,800mA)
P1	1	0.50	0.22	900
P4	4	2.24	1.20	3,600
P7	7	3.00	1.90	6,300
P9	9	3.50	2.00	8,100



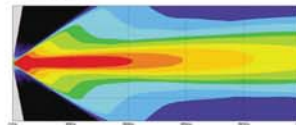
3W/5W Search & Working Light LED 300/305

3 WATT LEDs	5 WATT LEDs
MINING	OFFROAD
SEARCH/WORKING	MARINE
MILITARY	IR LED

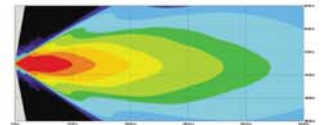


◆ BEAM PATTERN

— SPOT

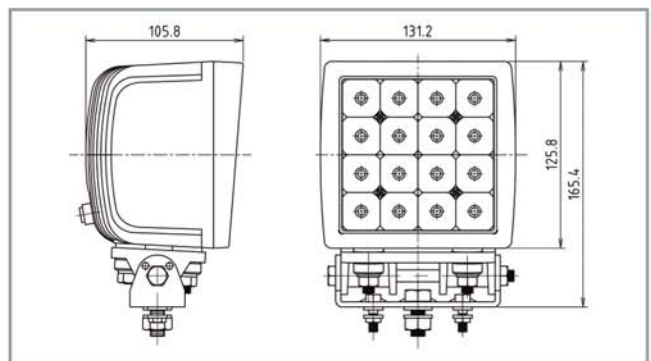


— FLOOD



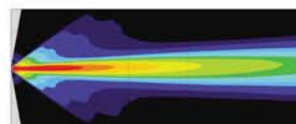
3W/5W Search & Working Light LED 500/505

3 WATT LEDs	5 WATT LEDs
MINING	OFFROAD
SEARCH/WORKING	MARINE
MILITARY	IR LED



◆ BEAM PATTERN

— SPOT

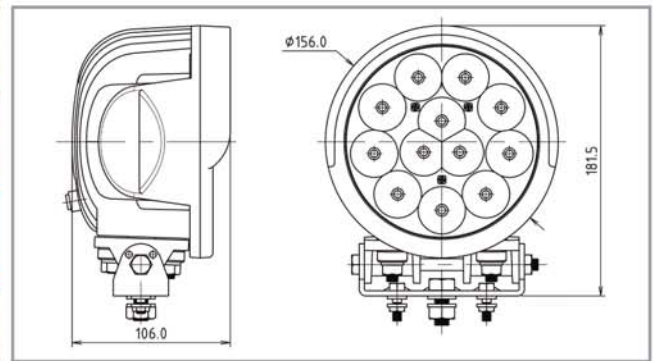


— FLOOD





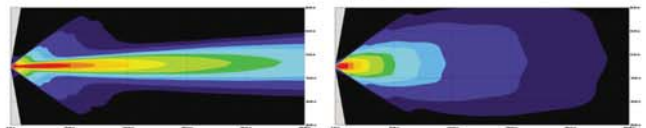
3W/5W Search & Working Light
LED 600/605



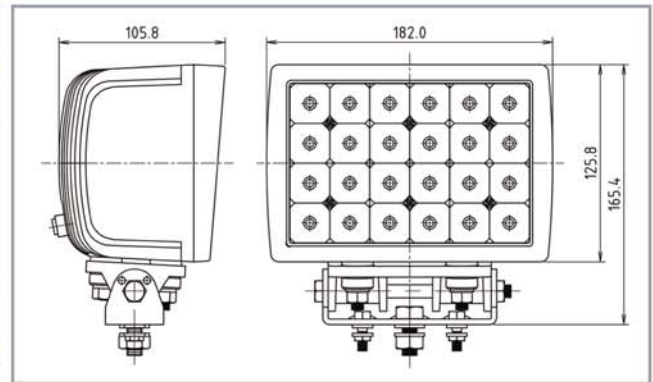
◆ BEAM PATTERN

– SPOT

– FLOOD



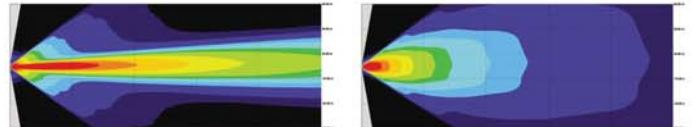
3W/5W Search & Working Light
LED 700/705



◆ BEAM PATTERN

– SPOT

– FLOOD



SPECIFICATION

1. OPERATING VOLTAGE : DC 9 ~ 32V
2. VIBRATION(G) : 8,6
3. WATER PROOF (IP68) & DUST RESISTANT
4. TEMPERATURE : -40°C ~ 50°C
5. LIFE SPAN : 50,000Hrs

INTRODUCTION

1. 3W/5W LEDs : CREE
2. LENS : POLY CARBONATE / UV COATING
3. BODY : ALUMINUM(EFFICIENT HEAT DISSIPATION)
4. REFLECTOR : PC / VACUUM METALIZED
- BRACKET : STAINLESS STEEL
6. WEATHERPROOF DEUTSCH CONNECTOR

MODEL	NO. OF LED (PCS)	RUNNING AMP DRAW(A) DC12V	WEIGHT(Kg)	LUMINOUS FLUX(lm) (700/1,500mA)	REMARK
LED 300	8	1.00	1.30	1,200	3W LED
LED 500	16	1.72	2.45	3,200	
LED 600	12	1.96	2.36	2,400	
LED 700	24	2.60	3.50	4,800	
LED 305	8	1.40	1.30	3,600	5W LED
LED 505	16	2.40	2.45	7,200	
LED 605	12	3.00	2.36	5,400	
LED 705	24	3.60	3.50	10,800	

(NYLON Body,

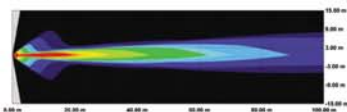


3W Search & Working Light
LED 350

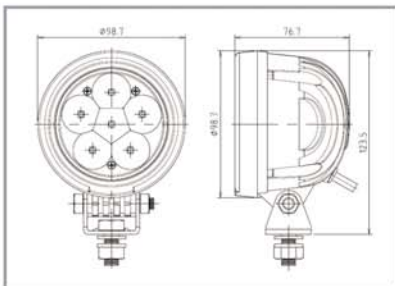
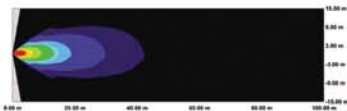


◆ BEAM PATTERN

– SPOT



– FLOOD



3W Search & Working Light
LED 400

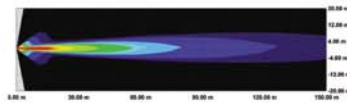


6P

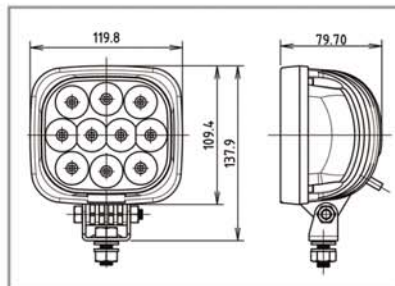
10P

◆ BEAM PATTERN

– SPOT



– FLOOD

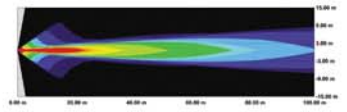


3W Search & Working Light
LED 430

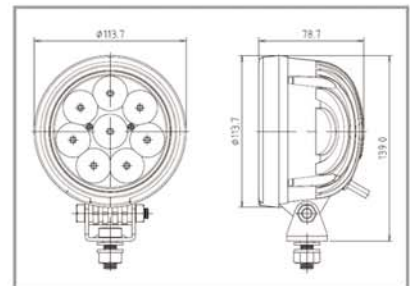
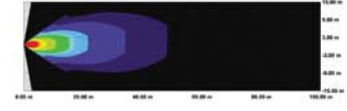


◆ BEAM PATTERN

– SPOT



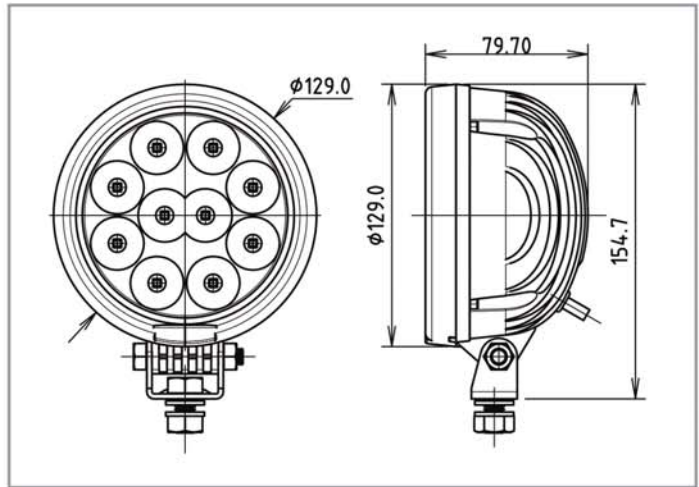
– FLOOD



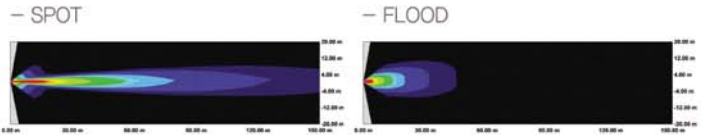
Extremely Light



3W Search & Working Light LED 450



◆ BEAM PATTERN



- 3 WATT**
- LEDx
- MIXING
- SEARCH/WORKING
- OFFROAD
- MARIN
- UNDERWATER
- MILITARY
- IR LED

SPECIFICATION	INTRODUCTION
1. OPERATING VOLTAGE : DC 9 ~ 32V 2. VIBRATION(G) : 6.0 3. WATER PROOF (IP68) & DUST RESISTANT 4. TEMPERATURE : -40°C ~ 50°C 5. LIFE SPAN : 50,000Hrs	1. 3W LEDs : CREE 2. LENS : POLY CARBONATE / UV COATING 3. BODY : NYLON (COLOR : BLACK / WHITE) 4. REFLECTOR : PC / VACUUM METALIZED 5. BRACKET : STAINLESS STEEL 6. WEATHERPROOF DEUTSCH CONNECTOR 7. BEACON FUNCTION AVAILABLE.

MODEL	NO. OF LED (PCS)	RUNNING AMP DRAW(A) DC12V	WEIGHT(g)	LUMINOUS FLUX(lm) (700mA)
LED - 350	6	0.6	450	1,200
LED - 400 - 6P	6	0.7	1,500	1,200
LED - 400 - 10P	10	1.0	1,500	2,000
LED - 430	8	0.75	550	1,600
LED - 450 - 6P	6	0.7	1,500	1,200
LED - 450 - 10P	10	1.0	1,500	2,000



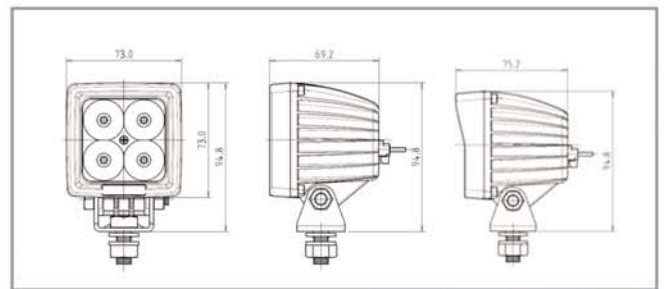


COVER : I
V4I



3W/5W Search &
Working Light
V4

COVER : P
V4P

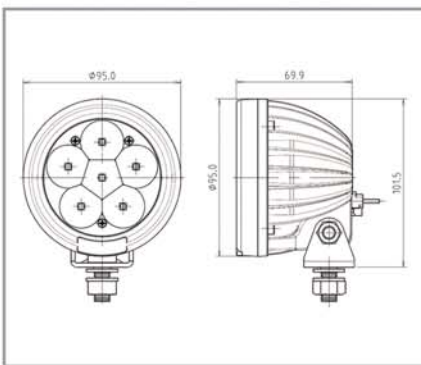
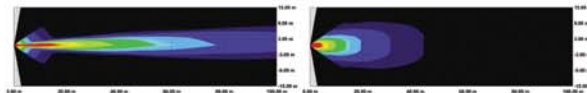


3 WATT LEDs	OFFROAD LEDs	MIRING LEDs	MILITARY IR LED
5 WATT LEDs	MARIN LEDs	SEARCHING LEDs	DESIGN CERTIFICATION
			CE CERTIFICATION

◆ BEAM PATTERN

– SPOT

– FLOOD



3 WATT LEDs	OFFROAD LEDs
5 WATT LEDs	MARIN LEDs
MIRING LEDs	MILITARY IR LED
SEARCHING LEDs	DESIGN CERTIFICATION



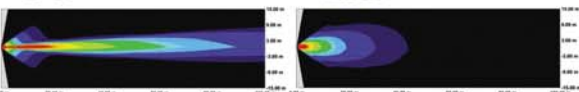
3W/5W Search &
Working Light
V6



◆ BEAM PATTERN

– SPOT

– FLOOD





3W/5W Search & Working Light V8



V8

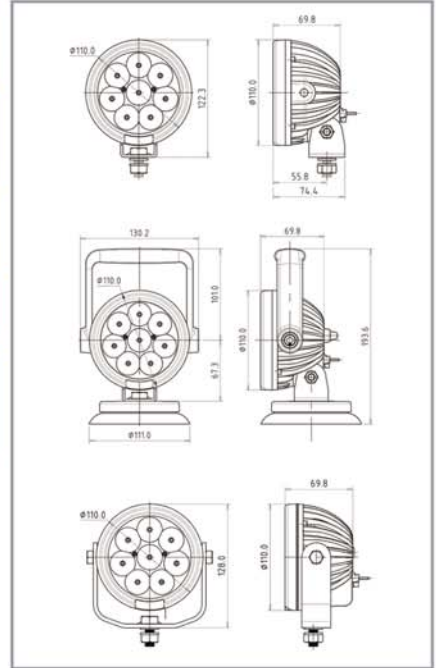


V8HMS



V8U

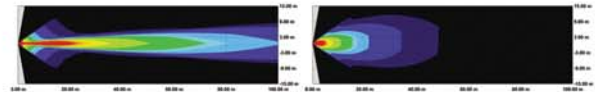
3 WATT	
LEDs	OFFROAD
5 WATT	
LEDs	MARIN
	MILITARY
Mining	IR LED
	DESIGN
SEARCH-WORKING	CERTIFICATION
CE	
CERTIFICATION	



BEAM PATTERN

— SPOT

— FLOOD



3W Search & Working Light V9



V9

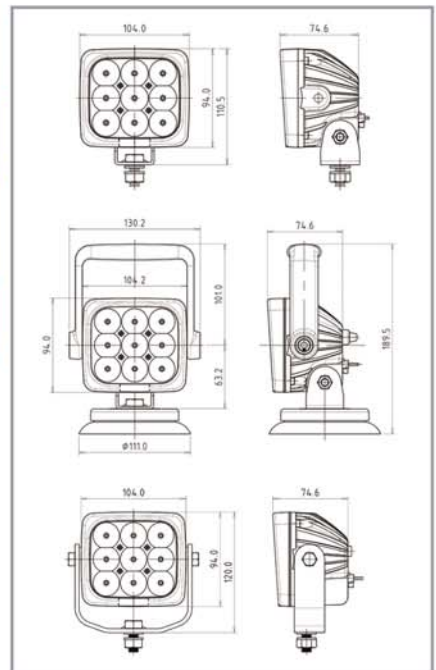


V9HMS



V9U

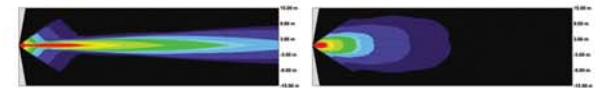
3 WATT	
LEDs	OFFROAD
5 WATT	
LEDs	MARIN
	MILITARY
Mining	IR LED
	DESIGN
SEARCH-WORKING	CERTIFICATION
CE	
CERTIFICATION	



BEAM PATTERN

— SPOT

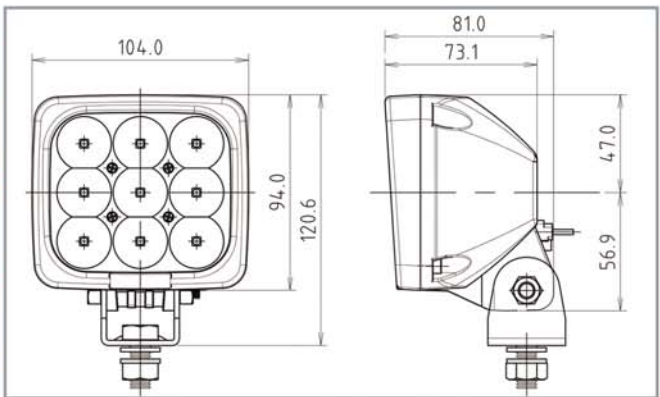
— FLOOD





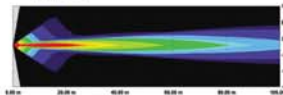
3W Search & Working Light V10

3 WATT	
LEDs	OFFROAD
5 WATT	
LEDs	MARINE
Mining	MILITARY
SEARCH&WORKING	IR LED
	DESIGN
	CERTIFICATION
CE	
CERTIFICATION	

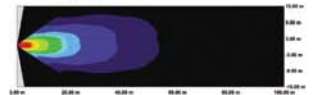


◆ BEAM PATTERN

— SPOT



— FLOOD



■ V10 : CONVERTABLE TO VOLVO HEAVY DUTY EQUIPMENT. (SIZE & SPECIFICATION IS THE SAME)

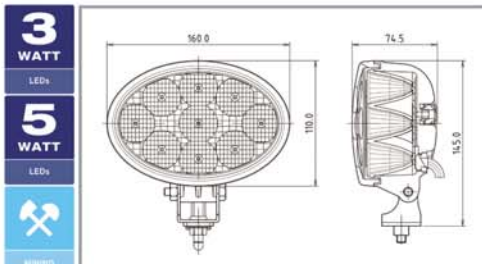
SPECIFICATION

1. OPERATING VOLTAGE : DC 9 ~ 32V
2. VIBRATION(G) : 8.6
3. WATER PROOF (IP68) & DUST RESISTANT
4. TEMPERATURE : -40°C ~ 50°C
5. LIFE SPAN : 50,000Hrs
6. BUILT INPUT CONNECTOR IN BODY

INTRODUCTION

1. 3W/5W LEDs : CREE
2. LENS : POLY CARBONATE / UV COATING
3. BODY : ALUMINUM(EFFICIENT HEAT DISSIPATION)/CHROME
4. REFLECTOR : PC / VACUUM METALIZED
5. BRACKET : STAINLESS STEEL
6. WEATHERPROOF DEUTSCH CONNECTOR

MODEL	NO. OF LED (PCS)	RUNNING AMP DRAW(A) DC12V		WEIGHT(g)	LUMINOUS FLUX(lm) (700mA)		REMARK
		3W	5W		3W	5W	
V4	4	0.65	0.82	598	800	1,800	
V6	6	0.92	1.1	677	1,200	2,700	
V8	8	1.1	1.35	740	1,600	3,600	
V9	9	1.23	1.55	750	1,800	4,050	
V10	9	1.27	1.55	815	1,800	4,050	
V9/V10-100V	9	1.27	1.55	815	1,800	4,050	



SPECIFICATION

1. Operating Voltage(DCV) : 9~32V
2. Running AMP Draw(mA) : 1,650(DC12V)
3. Luminous Flux(lm) : 4,050
4. Weight (g) : 800
5. Vibration(G) : 8.6
6. Water Proof (IP68) & Dust Resistance
7. Temperature : -40°C ~ 50°C
8. LED Lifespin : 50,000hrs
9. LED Color Temp : 6,000~7,000K Available

INTRODUCTION

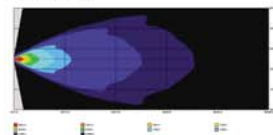
1. 5W LED : 9Pcs(LG)
2. Efficient Heat Dissipation : Aluminum Housing
3. DC 12V / 24V Available
4. Body Color : Black
5. Bracket : Stainless Steel
6. Reflector : PC (Flood)
7. Lens : Borosilicate Hardened Glass
8. Use : On & Off Road, Heavy duty equipment, Marine and so on.
9. 200cm wire
10. Vent Filter



5W Working Light W95

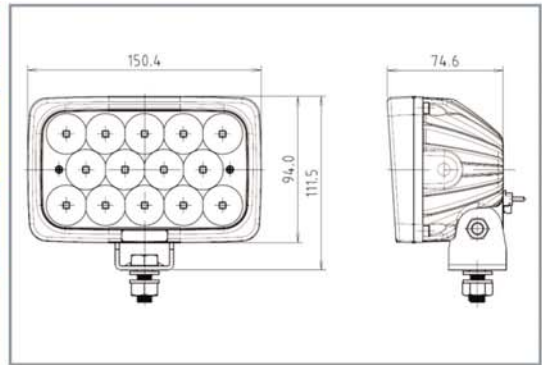
◆ BEAM PATTERN

— FLOOD

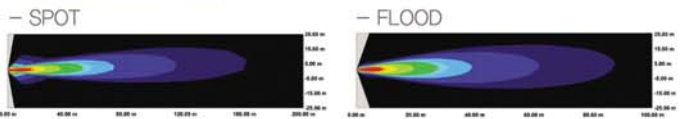




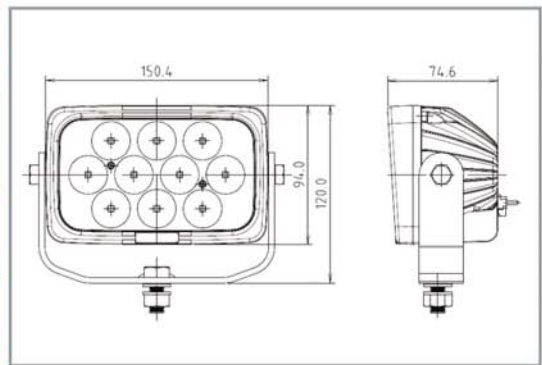
3 WATT	
LEDs	OFFROAD
5 WATT	
LEDs	MARINE
MINING	UNDERWATER
MILITARY	IR LED
	CE
SEARCH & WORKING	CERTIFICATION



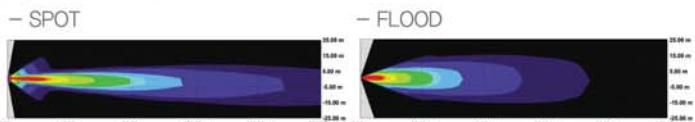
◆ BEAM PATTERN



3 WATT	
LEDs	OFFROAD
5 WATT	
LEDs	MARINE
MINING	UNDERWATER
MILITARY	IR LED
	CE
SEARCH & WORKING	CERTIFICATION



◆ BEAM PATTERN



SPECIFICATION	INTRODUCTION
1. OPERATING VOLTAGE : DC 9 ~ 32V 2. VIBRATION(G) : 8,6 3. WATER PROOF (IP68) & DUST RESISTANT 4. TEMPERATURE : -40°C ~ 50°C 5. LIFE SPAN : 50,000Hrs 6. BUILT INPUT CONNECTOR IN BODY	1. 3W/5W LEDs : CREE 2. LENS : POLY CARBONATE / UV COATING 3. BODY : ALUMINUM(EFFICIENT HEAT DISSIPATION) / CHROME 4. REFLECTOR : PC / VACUUM METALIZED 5. BRACKET : STAINLESS STEEL 6. WEATHERPROOF DEUTSCH CONNECTOR

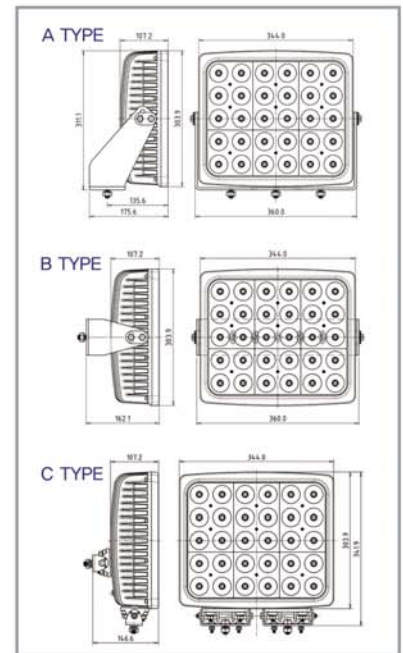
MODEL	NO. OF LED (PCS)	RUNNING AMP DRAW(A) DC12V	WEIGHT(g)	LUMINOUS FLUX(lm) (700mA/1,500mA)
V1414-3W	14	2,8	1,130 / 1,350	2,800
V1414-5W	14	3,6		6,300
V1410-3W	10	2,3		2,000
V1410-5W	10	3,06		4,500



5W Search & Working Light
FL - 305

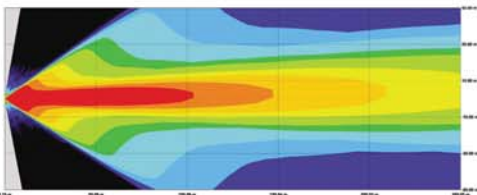


10W Search & Working Light
FL - 300

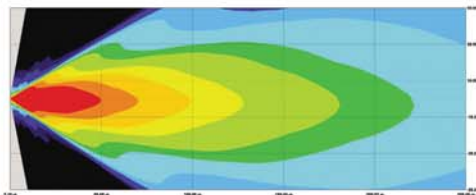


◆ BEAM PATTERN(FL-300)

- SPOT

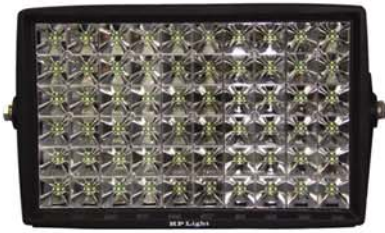


- FLOOD



- 10 WATT** LED
- MIBING
- SEARCHWORKING
- ILLUMINATION
- OFFROAD
- MARIN** UNDERWATER
- MILITARY** IR LED

SPECIFICATION	FL-305	FL-300
1. LED (CREE) PIECES	5W LED : 120	10W LED : 30
2. LUMINOUS FLUX(lm) (1500/2800mA)	48,000	27,000
3. OPERATING VOLTAGE	DC 9 ~ 32V	
4. RUNNING AMP DRAW(A) (24V)	10.0	10.0
5 WEIGHT(Kg)	9.5	9.3
6. REFLECTOR	PC / VACUUM METALIZED	
7. VIBRATION(G)	8.6	
8. WATER PROOF & DUST RESISTANT	IP 68	
9. TEMPERATURE	-40°C ~ 50°C	
10. HOUSING / COLOR	DIE-CAST ALUMINUM / BLACK	
11. LENS	POLY CARBONATE / UV COATING	
12. LIFE SPAN	50,000Hrs	



5W Search & Working Light
FL - 150



BRACKET : A TYPE



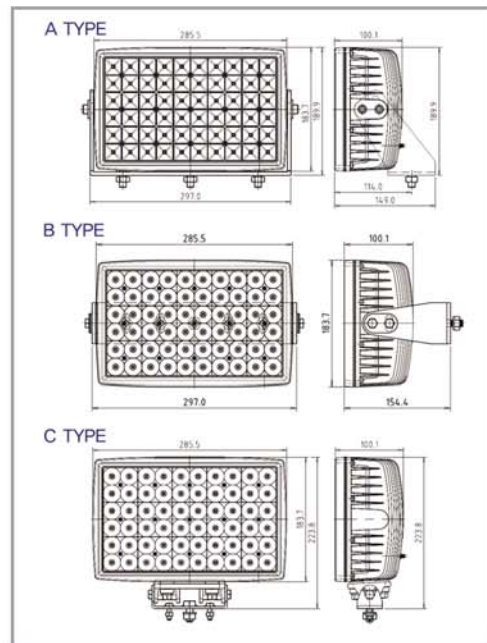
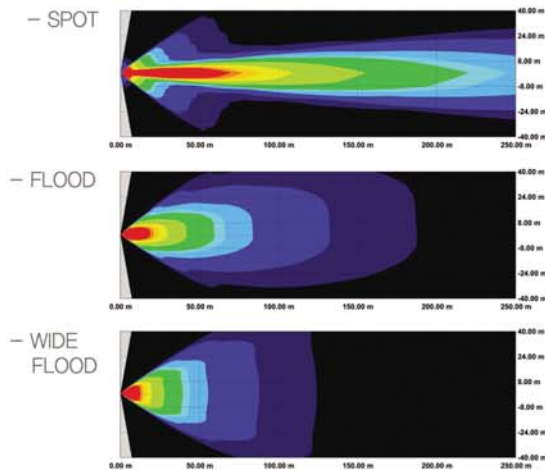
BRACKET : B TYPE

BRACKET : C TYPE



MEANWELL:HLG-320H-24A

◆ BEAM PATTERN(FL-150)



- 5 WATT**
- LEDs
- MARIN
- SEARCHWORKING
- OFFROAD
- MARIN
- UNDERWATER
- MILITARY
- IR LED
- CE**
- CERTIFICATION

SPECIFICATION	FL-150
1. LED (CREE) PIECES	5W LED : 60
2. LUMINOUS FLUX(lm) (2800mA)	27,000
3. OPERATING VOLTAGE	DC 9 ~ 32V
4. RUNNING AMP DRAW(A) (24V)	8.0A
5 WEIGHT(Kg)	6.6
6. REFLECTOR	PC / VACUUM METALIZED
7. VIBRATION(G)	8.6
8. WATER PROOF & DUST RESISTANT	IP 68
9. TEMPERATURE	-40°C ~ 50°C
10. HOUSING / COLOR	DIE-CAST ALUMINUM / BLACK
11. LENS	POLY CARBONATE / UV COATING
12. LIFE SPAN	50,000Hrs

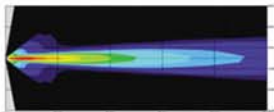


5W Search & Working Light
HD054

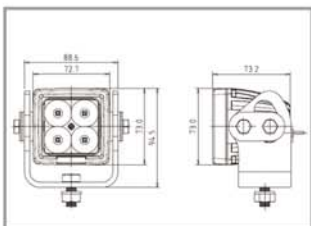


◆ BEAM PATTERN

– SPOT



– FLOOD

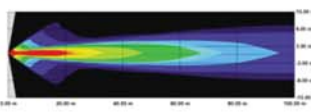


CE 5W Search & Working Light
HD582
CERTIFICATION

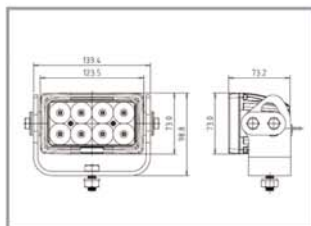
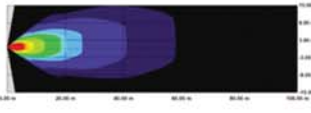


◆ BEAM PATTERN

– SPOT



– FLOOD

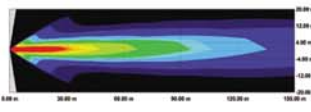


5W Search & Working Light
HD058

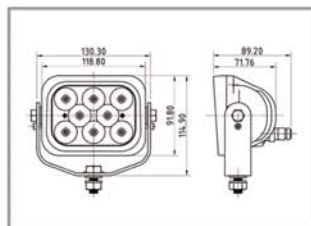
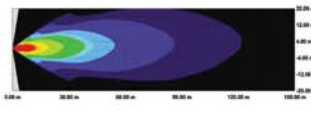


◆ BEAM PATTERN

– SPOT



– FLOOD

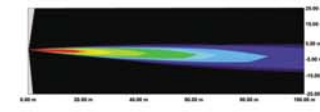


CE 10W Search & Working Light
HD102
CERTIFICATION

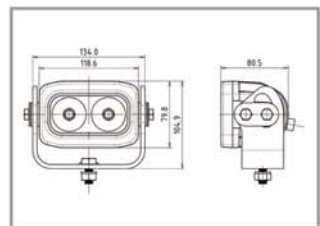
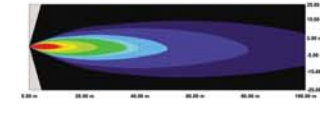


◆ BEAM PATTERN

– SPOT



– FLOOD



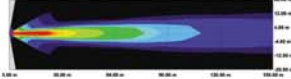


10W Search & Working Light HD104

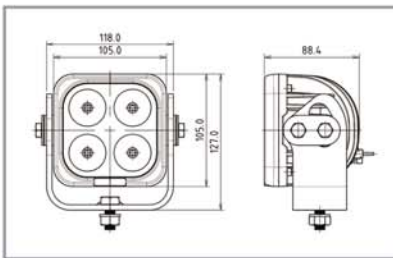
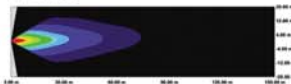


◆ BEAM PATTERN

– SPOT



– FLOOD

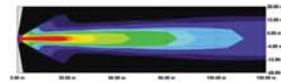


10W Search & Working Light HD107

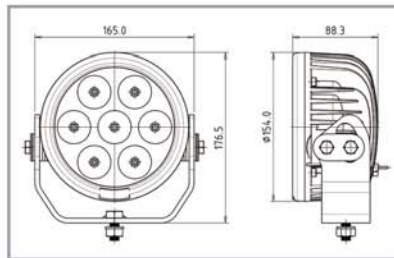
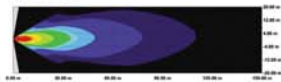


◆ BEAM PATTERN

– SPOT



– FLOOD

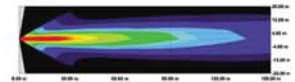


10W Search & Working Light HD109

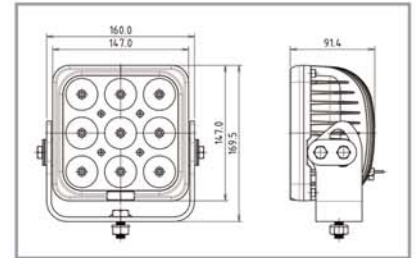


◆ BEAM PATTERN

– SPOT



– FLOOD



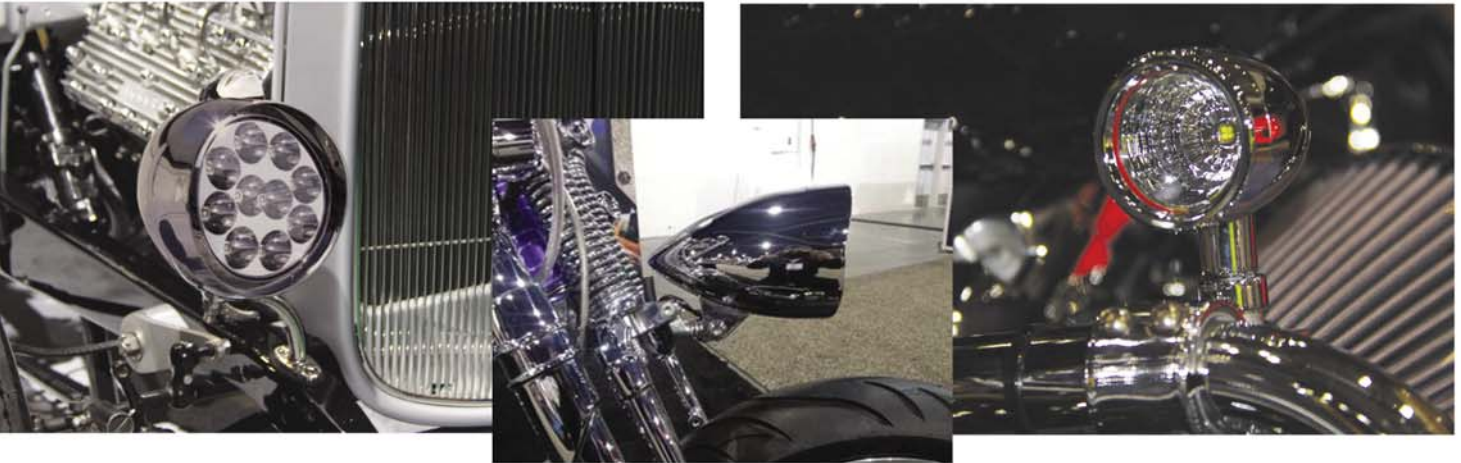
※ FEATURE OF BRACKET

1. BE ABSORBED VIBRATION FROM UP&DOWN, LEFT&RIGHT AND FRONT&BACK
2. BE RESISTED AGAINST HIGH VIBRATION & IMPACT

- 5 WATT** LED
- 10 WATT** LED
- MARIN
- SEARCHWORKING
- OFFROAD
- MARIN
- UNDERWATER
- MILITARY
- W LED

SPECIFICATION	INTRODUCTION
1. OPERATING VOLTAGE : DC 9 ~ 32V 2. VIBRATION(G) : 8.6 3. WATER PROOF (IP68) & DUST RESISTANT 4. TEMPERATURE : -40°C ~ 50°C 5. LIFE SPAN : 50,000Hrs 6. BUILT INPUT CONNECTOR IN BODY	1. 5W/10W LEDs : CREE 2. LENS : POLY CARBONATE / UV COATING 3. BODY : ALUMINUM(EFFICIENT HEAT DISSIPATION) 4. REFLECTOR : PC / VACUUM METALIZED 5. BRACKET : IRON 5t, WIDTH 50mm 6. WEATHERPROOF DEUTSCH CONNECTOR

MODEL	RUNNING AMP DRAW(A) DC12V	WEIGHT(g)	LUMINOUS FLUX(lm) (2,800mA)	REMARK
HD054	0.70	1.11	1,800	5W LED
HD582	1.40	1.56	3,600	
HD058	1.40	1.35	3,600	
HD102	0.96	1.47	1,800	10W LED
HD104	2.24	1.45	3,600	
HD107	3.00	2.22	6,300	
HD109	3.50	2.25	8,100	

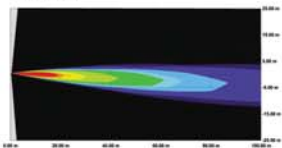


10W Search & Working Light L20

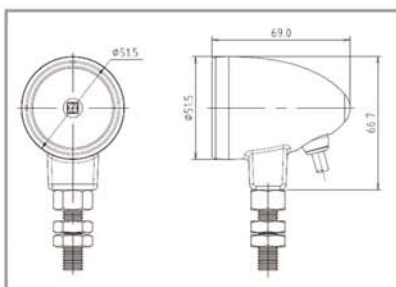
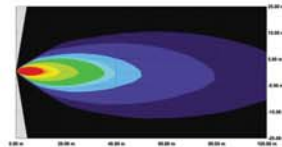


◆ BEAM PATTERN

- SPOT



- FLOOD

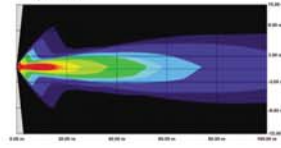


Motorcycle Light L35

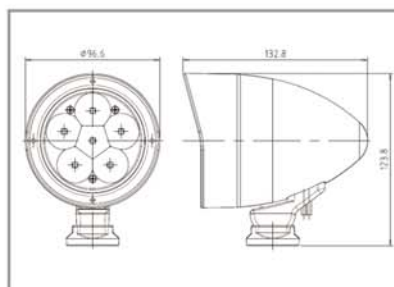
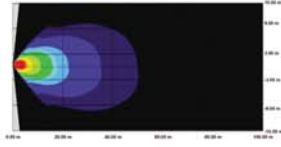


◆ BEAM PATTERN

- SPOT



- FLOOD

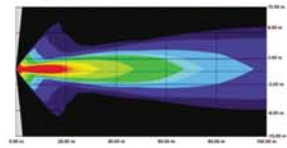


Motorcycle Light L43

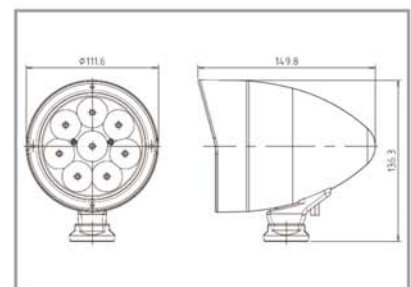
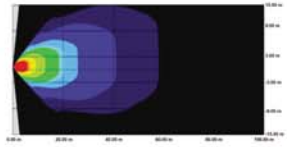


◆ BEAM PATTERN

- SPOT



- FLOOD

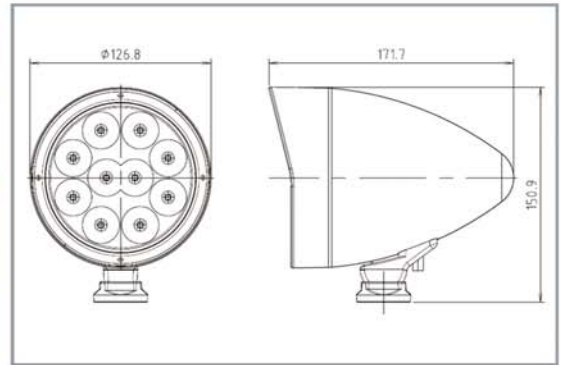




Motorcycle Light L50

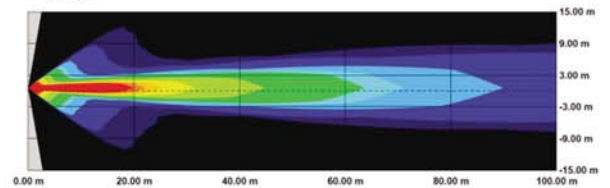


5 WATT	
LEDs	OFFROAD
	MARIN
MARIN	UNDERWATER
	MILITARY
TECHWORKING	IR LED
	CE
MOTORCYCLE	CERTIFICATION
	PATENT
CERTIFICATION	

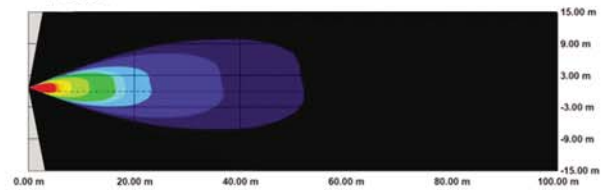


◆ BEAM PATTERN

— SPOT



— FLOOD



SPECIFICATION

1. OPERATING VOLTAGE : DC 9 ~ 32V
2. VIBRATION(G) : 8,6
3. WATER PROOF (IP68) & DUST RESISTANT
4. TEMPERATURE : -40°C ~ 50°C
5. LIFE SPAN : 50,000Hrs

INTRODUCTION

1. 5W LEDs : CREE
2. LENS : POLY CARBONATE / UV COATING
3. BODY : ALUMINUM(EFFICIENT HEAT DISSIPATION) / CHROME
4. REFLECTOR : PC / VACUUM METALIZED
5. BRACKET : ZINC
6. LEADWIRE : 1m

MODEL	NO. OF LED (PCS)	RUNNING AMP DRAW(A) DC12V	WEIGHT(g)	LUMINOUS FLUX(lm) (1,500/2,800mA)
L20-10W	1	0.46	250	900
L35-5W	6	0.87	757	2,700
L43-5W	8	1.45	897	3,600
L50-5W	10	1.6	1,100	4,500

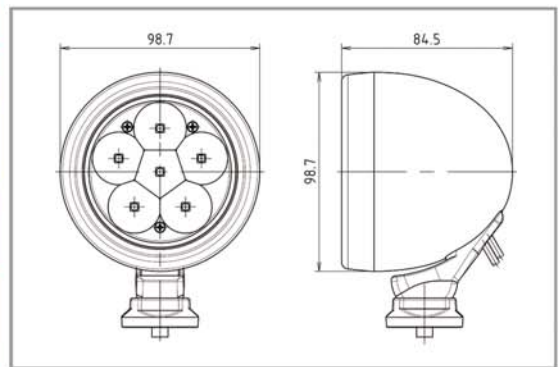




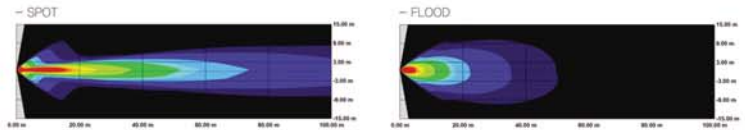
Motorcycle Light
M35



5 WATT	
LEDs	OFFROAD
	MARIN
MINING	UNDERWATER
	MILITARY
SEARCHWORKING	IR LED
	MOTORCYCLE



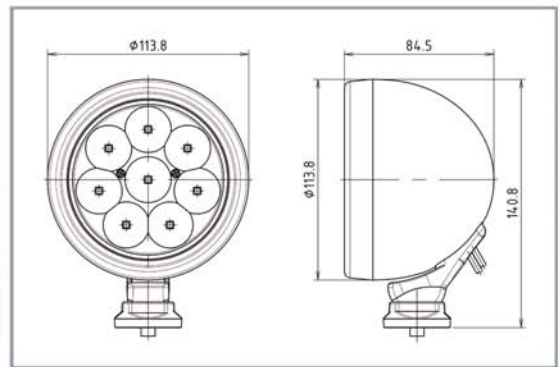
◆ BEAM PATTERN



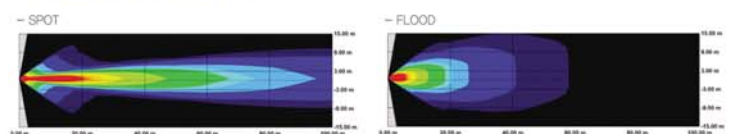
Motorcycle Light
M43



5 WATT	
LEDs	OFFROAD
	MARIN
MINING	UNDERWATER
	MILITARY
SEARCHWORKING	IR LED
	MOTORCYCLE

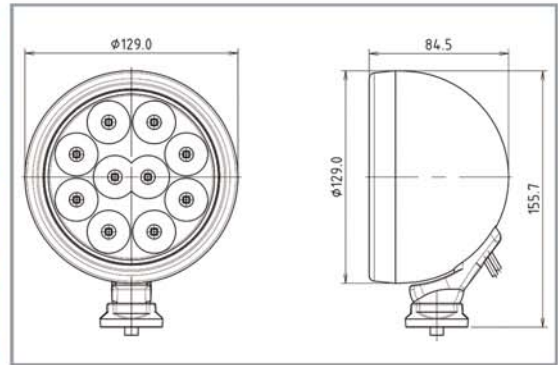


◆ BEAM PATTERN

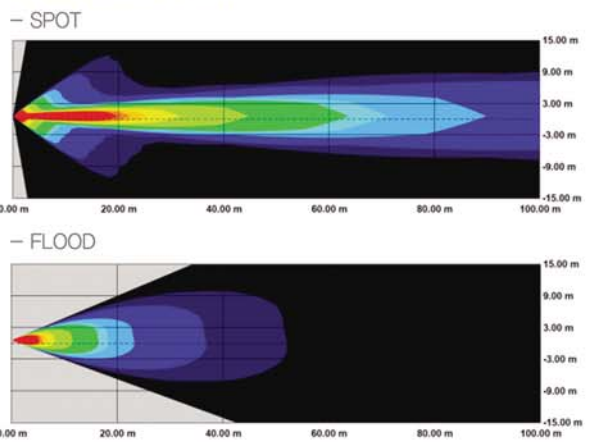




Motorcycle Light M50



◆ BEAM PATTERN



SPECIFICATION

1. OPERATING VOLTAGE : DC 9 ~ 32V
2. VIBRATION(G) : 8.6
3. WATER PROOF (IP68) & DUST RESISTANT
4. TEMPERATURE : -40°C ~ 50°C
5. LIFE SPAN : 50,000Hrs

INTRODUCTION

1. 5W LEDs : CREE
2. LENS : POLY CARBONATE / UV COATING
3. BODY : ALUMINUM(EFFICIENT HEAT DISSIPATION) / CHROME
4. REFLECTOR : PC / VACUUM METALIZED
5. BRACKET : ZINC
6. LEADWIRE : 1m

MODEL	NO. OF LED (PCS)	RUNNING AMP DRAW(A) DC12V	WEIGHT(g)	LUMINOUS FLUX(lm) (1,500mA)
M35-5W	6	0.87	740	2,700
M43-5W	8	1.45	870	3,600
M50-5W	10	1.6	1,000	4,500



M35



M43



M50



HEAD LAMP
R5310

DOT

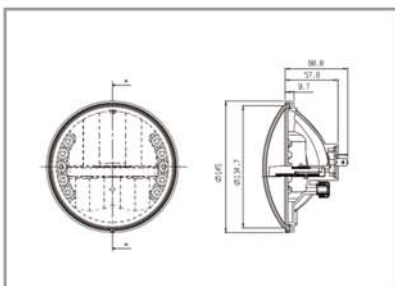
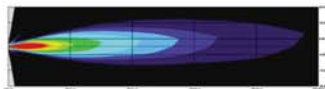


◆ BEAM PATTERN

- LOW



- HI



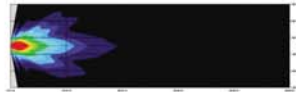
HEAD LAMP
R7110

DOT

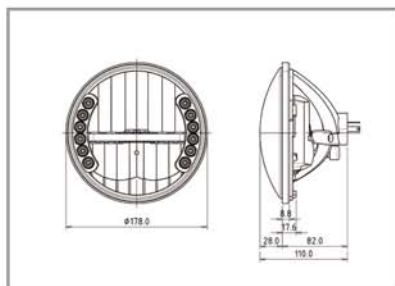
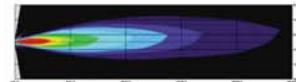


◆ BEAM PATTERN

- LOW



- HI



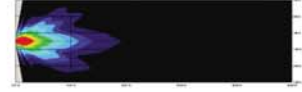
HEAD LAMP
R7010 / R7020

DOT

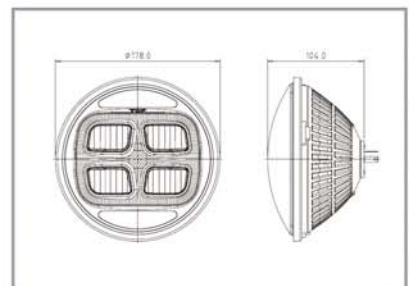
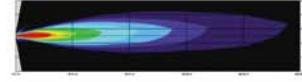


◆ BEAM PATTERN

- LOW

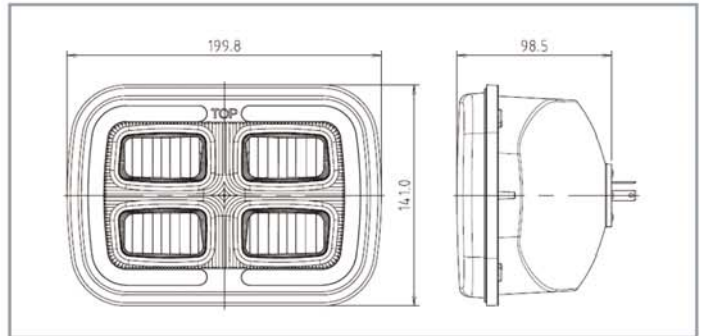


- HI





HEAD LAMP
5710 / 5720

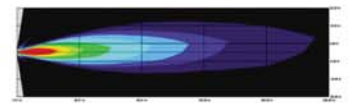


◆ BEAM PATTERN

- LOW



- HI



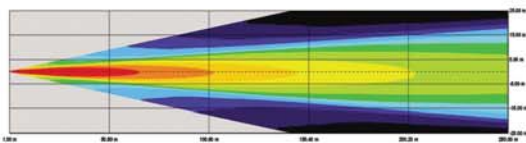
SPECIFICATION	INTRODUCTION
1. OPERATING VOLTAGE : DC 9 ~ 32V 2. VIBRATION(G) : 8,6 3. 2 LED ARRAYS(Low / Hi) EACH 4. TEMPERATURE : -40°C ~ 50°C 5. AIR CAP / AUXILIARY LIGHT 6. BUILT IN H4 SOCKET OR AVAILABLE CABLE, 7. MEDIUM AND HEAVY-DUTY TRUCK, OFF-ROAD VEHICLE, CLASSIC CARS, MOTORCYCLES AND MORE	1. 10W LEDs : CREE 2. LENS : GLASS or PC 3. BODY : ALUMINUM (EFFICIENT HEAT DISSIPATION) 4. REFLECTOR : PC / VACUUM METALIZED 5. LOW BEAM AND HIGH BEAM PERFORMANCE 6. STANDARD, H4 CONNECTOR

MODEL		RUNNING AMP DRAW(A) DC12V	WEIGHT(g)	LUMINOUS FLUX(lm) (700mA)	REMARK
R5310		LOW : 0.6	0.58	1,800	
		HI : 0.6		1,800	
	SIDELIGHT	0.06			
R7110		LOW : 1.9	1.2	1,800	
		HI : 3.8		1,800	
	SIDELIGHT	0.07			
R7000		LOW : 1.9	1.2	1,800	GLASS COVER:R7010 PC COVER:R7020
		HI : 3.8		1,800	
	SIDELIGHT	0.07			
5700		LOW : 1.9	1.2	1,800	GLASS COVER:5710 PC COVER:5720
		HI : 3.8		1,800	
	SIDELIGHT	0.07			

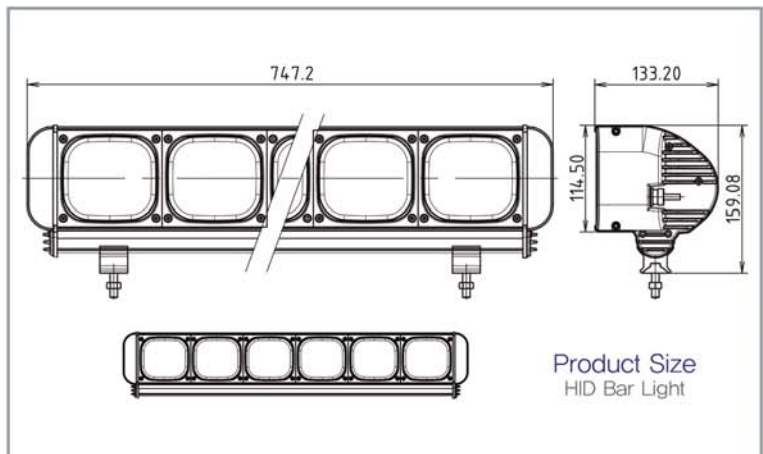
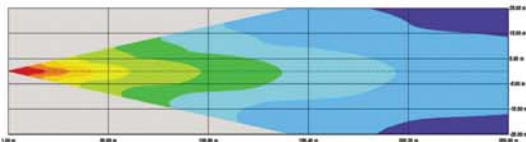


◆ BEAM PATTERN(1P)

— SPOT



— FLOOD



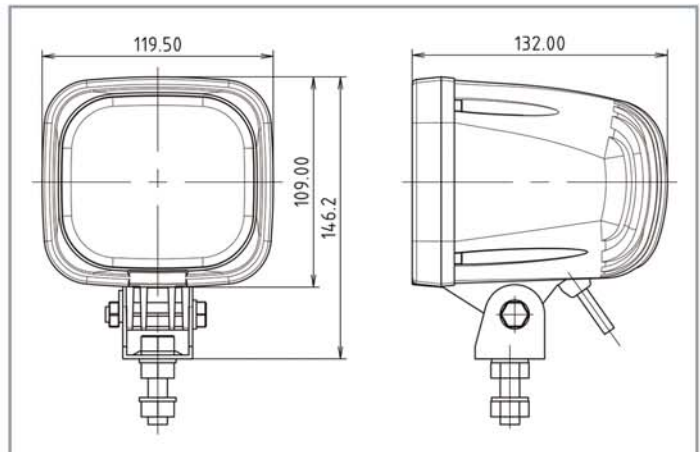
- MINING
- TEMPORARY
- DESIGN
- CERTIFICATION
- OFFROAD
- 35 WATT** HID
- MARINE
- UNDERWATER
- MILITARY
- IR LED

SPECIFICATION	INTRODUCTION
1. OPERATING VOLTAGE : DC 9 ~ 28V 2. VIBRATION(G) : 8,6 3. WATER PROOF (IP68) & DUST RESISTANT 4. TEMPERATURE : -40°C ~ 105°C 5. LIFE SPAN : 2,500Hrs 6. HID COLOR TEMP : PURE/NATURAL/WARM WHITE	1. 12V/24V AVAILABLE 2. LENS : BOROSILICATE HARDENED GLASS 3. BODY : ALUMINUM(EFFICIENT HEAT DISSIPATION) 4. REFLECTOR : PRECISION METAL/VACUUM METALIZED 5. BRACKET : BILLET CLAMP TUBE MOUNTING AVAILABLE 6. WEATHERPROOF DEUTSCH CONNECTOR

NO. OF HID (PCS)	RUNNING AMP DRAW(A) DC12V	LENGTH(mm)	WEIGHT(Kg)	LUMINOUS FLUX(lm) (700mA)
1P	3.2	187.7	2.33	3,200
2P	6.4	292.4	4.00	6,400
3P	9.6	406.1	5.67	9,600
4P	12.8	519.8	7.34	12,800
6P	16.0	747.2	10.68	16,000
8P	19.2	974.6	14.02	19,200
10P	22.4	1,202.0	17.36	22,400



HID Search & Working Light
HID 4645

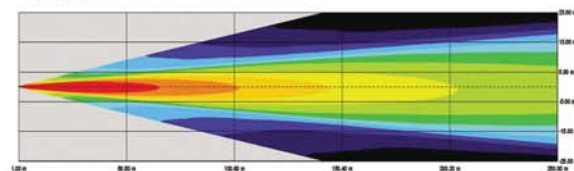


- MIBAG
- TELEWORKING
- OFFROAD
- 35 WATT** HID
- MARIN
- UNDERWATER
- MILITARY
- IR LED
- DESIGN
- CERTIFICATION

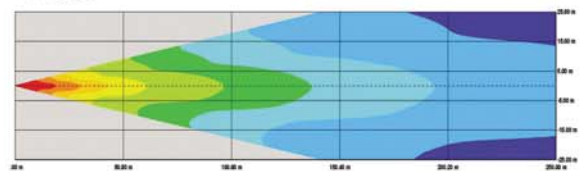
SPECIFICATION	INTRODUCTION
1. OPERATING VOLTAGE : DC 9 ~ 28V 2. RUNNING AMP DRAW(A) : 3.2A(DC12.8A) 3. LUMINOUS FLUX(lm) : 3,200±400 4. WEIGHT : 810(g) 5. VIBRATION(G) : 8.6 7. WATER PROOF (IP68) & DUST RESISTANT 8. TEMPERATURE : -40°C ~ 105°C 9. LIFE SPAN : 2,500Hrs	1. POWER SAVING : 35W HID 2. 12V/24V AVAILABLE 3. LENS : BOROSILICATE HARDENED GLASS 4. BODY / COVER : NYLON (BLACK / WHITE) 5. REFLECTOR : PRECISION METAL/VACUUM METALIZED 6. BRACKET : STAINLESS STEEL 7. HID COLOR TEMP : PURE/NATUAL/WARM WHITE

◆ BEAM PATTERN

- SPOT



- FLOOD



BEACON WITH MAGNETIC BASE
HP-9260



BEACON
HP-9250



LED 400

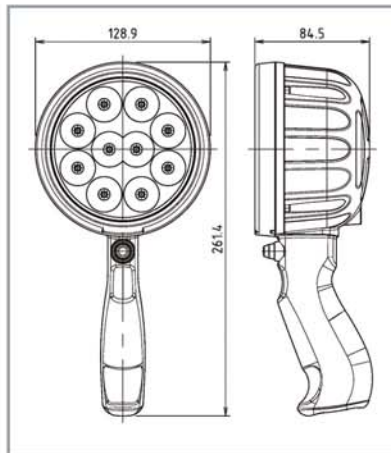
INTRODUCTION

- | | |
|--|-------------------------------|
| 1. OPERATING VOLTAGE : DC 9 ~ 32V | 3. TEMPERATURE : -40°C ~ 50°C |
| 2. FLASH SEQUENCE : SIMPLE, DOUBLE, TRIPLE(LED ONLY) | 4. LIGHT HOOD : PC |

MODEL	RUNNING AMP DRAW(A) DC12V	WEIGHT(Kg)	LUMINOUS FLUX(lm) (2,800mA)	REMARK
HP - 9260	LED	0.34	545	CIGA JACK
HP - 9250	LED	0.34	545	

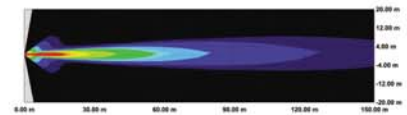


3W Search Light
HANDLIGHT



◆ BEAM PATTERN

— SPOT



— FLOOD



3 WATT LEDs	5 WATT LEDs	SEARCHLIGHT	OFFROAD	MARIN	MILITARY
UTILITY MODEL	LI-ION	PATENT			
WIND	CERTIFICATION	BATTERY	CERTIFICATION		

SPECIFICATION

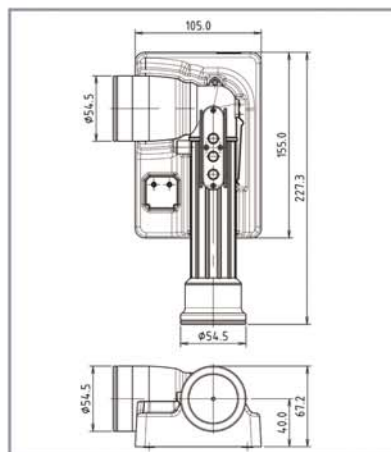
1. BATTERY : LI-ION 4S1P(3.7V*4 / 2,600mA)
2. BATTERY CHARGER : AC 90~230V 50/60Hz
DC16.8V / 2.0A
3. BATTERY CHARGING TIME : 1Hr 30m
4. BATTERY LIFE : 3Hr
5. LUMINOUS FLUX(lm) : 2,000(700mA)
6. WEIGHT(g) : 860
7. TEMPERATURE : -40°C ~ 50°C

INTRODUCTION

1. 3W LED : 10 PIECES(CREE)
2. LENS : POLY CARBONATE / UV COATING
3. BODY : NYLON (BLACK)
4. REFLECTOR : PC / VACUUM METALIZED
5. OPTION : USE CAR BATTERY
—NEED TO CONNECT CABLE
6. BATTERY WARRANTY : 6 MONTH
7. LIFE SPAN : 50,000Hrs

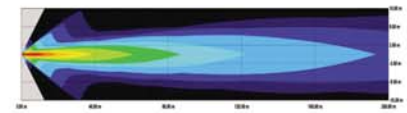


5W Search Light
LANTERN

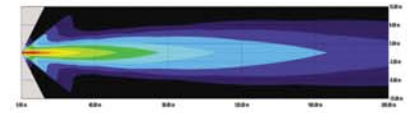


◆ BEAM PATTERN

— HI



— LO



SPECIFICATION

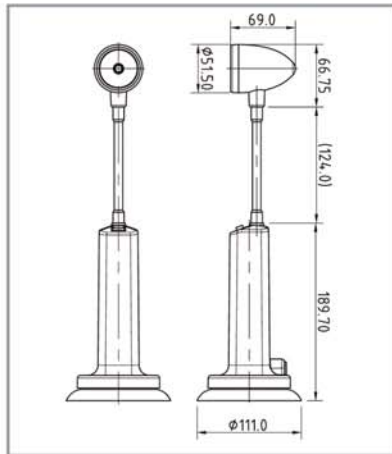
1. BATTERY : LI-ION 2S1P(3.7V*2 / 2,600mA)
2. BATTERY CHARGER : AC 90~230V 50/60Hz
DC8.4V / 1.5A
3. BATTERY CHARGING TIME : 2Hr 30m
4. BATTERY LIFE : 2Hr(HI), 5Hr(LO)
5. LUMINOUS FLUX(lm) : 450(1,500mA)
6. WEIGHT(g) : 1,200
7. TEMPERATURE : -40°C ~ 50°C
8. LIFE SPAN : 50,000Hrs

INTRODUCTION

1. 5W LED (CREE)
2. LENS : POLY CARBONATE / UV COATING
3. BODY : NYLON (BLACK)
4. REFLECTOR : PC / VACUUM METALIZED
5. GREEN SWITCH : LED LIGHT ON(HI/LO/OFF)
6. YELLOW SWITCH : LAZER DIODE ON/OFF
7. RED SWITCH : PIEZO ON/OFF
— NOT MOVING DURING 20SEC WITHIN : PIEZO ON
8. BATTERY WARRANTY : 6 MONTH

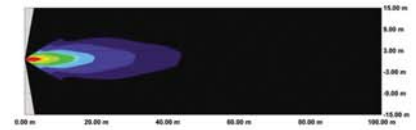


LED STAND LIGHT
LED 130

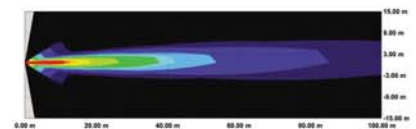


◆ BEAM PATTERN

– SPOT



– FLOOD



SPECIFICATION

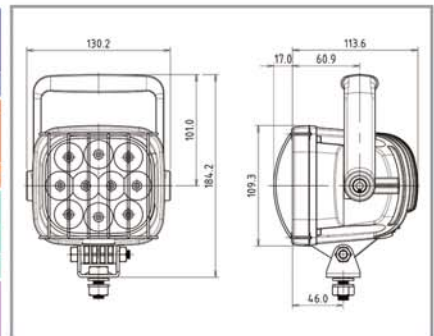
1. BATTERY : LI-ION 4S2P(3.7V*4 / 2,600mA)
2. BATTERY CHARGER : AC 90~230V 50/60Hz
DC16.8V / 2.0A
3. BATTERY CHARGING TIME : 3Hr
4. BATTERY LIFE : 12Hr
5. LUMINOUS FLUX(lm) : 900(2,800mA)
6. WEIGHT(g) : 940
7. TEMPERATURE : -40°C ~ 50°C

INTRODUCTION

1. 10W LED : 1 PIECE(CREE)
2. LENS : POLY CARBONATE / UV COATING
3. BODY : ALUMINUM (CHROME)
4. REFLECTOR : PC / VACUUM METALIZED
5. MAGNETIC MOUNTING SYSTEM
6. BATTERY CASE : NYLON (BLACK)
7. BATTERY WARRANTY : 6 MONTH
8. LIFE SPAN : 50,000Hrs

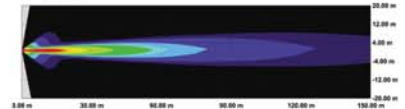


3W Search & Light
400HMS



◆ BEAM PATTERN

– SPOT



– FLOOD



SPECIFICATION

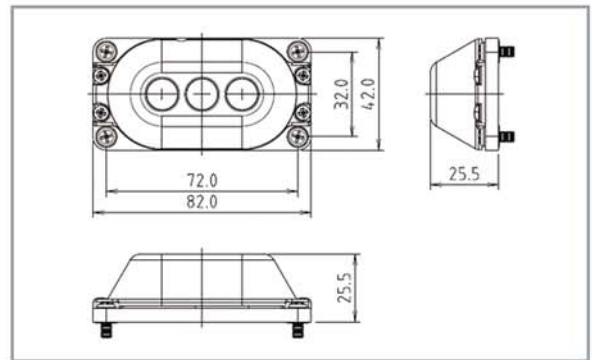
1. BATTERY : LI-ION 3S2P(3.7V*6 / 2,600mA)
2. BATTERY CHARGER : AC 90~230V 50/60Hz
DC12.0V / 2.0A
3. BATTERY CHARGING TIME : 5Hr 30m
4. BATTERY LIFE : KEEPING ON LIGHT : 6Hr
2S ON / 1.5S OFF : 10Hr
5. LUMINOUS FLUX(lm) : 2,000(700mA)
6. WEIGHT(g) : 1,290

INTRODUCTION

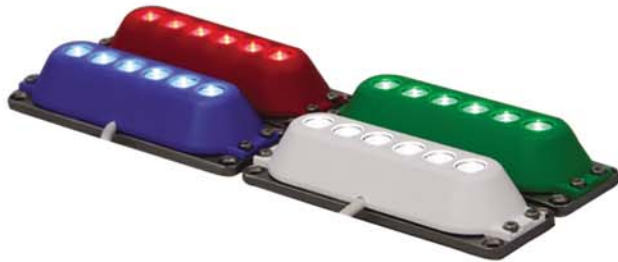
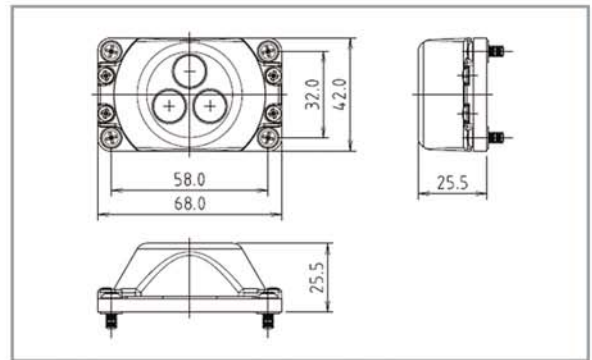
1. 3W LED : 10 PIECES(CREE)
2. LENS : POLY CARBONATE / UV COATING
3. BODY : NYLON (BLACK)
4. REFLECTOR : PC / VACUUM METALIZED
5. BATTERY WARRANTY : 6 MONTH
6. LIFE SPAN : 50,000Hrs
7. TEMPERATURE : -40°C ~ 50°C



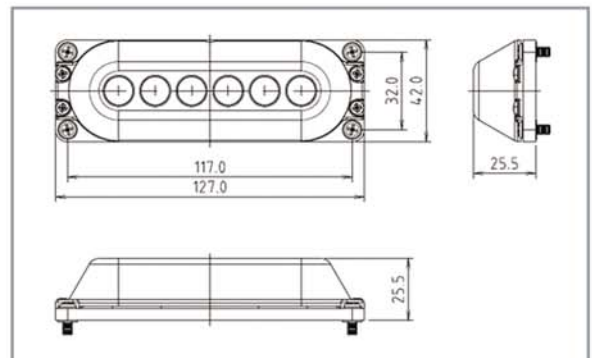
UNDERWATER
S3L



UNDERWATER
D3L

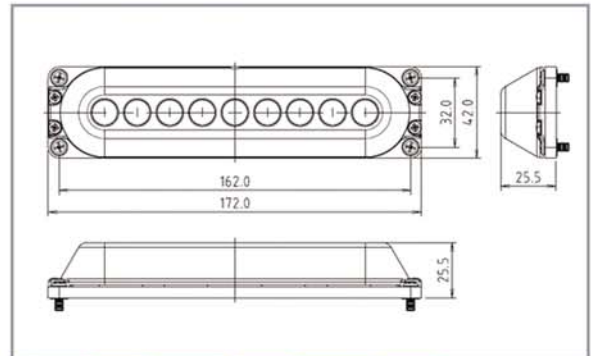


UNDERWATER
S6L





UNDERWATER
S9L



UNDERWATER
S9LD



3 Types of Dimming Control is available with one model

UNDERWATER
DIMMING CONTROL

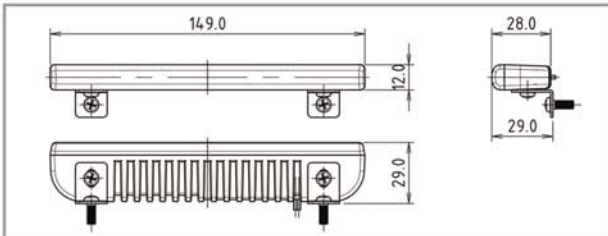


SUPERBRIGHT COLOURS AVAILABLE :
RED, GREEN, BLUE, WHITE, WARM WHITE

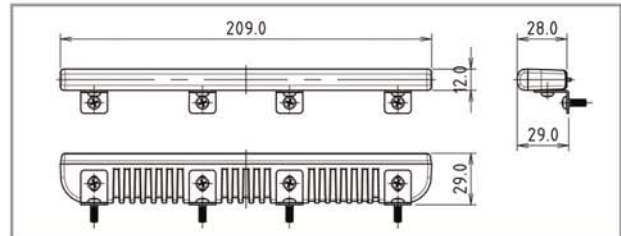
MODEL	S3L		D3L		S6L		S9L		S9LD
	RED	GREEN BLUE WHITE	RED	GREEN BLUE WHITE	RED	GREEN BLUE WHITE	RED	GREEN BLUE WHITE	
LED	RED	GREEN BLUE WHITE	RED	GREEN BLUE WHITE	RED	GREEN BLUE WHITE	RED	GREEN BLUE WHITE	RED, GREEN, BLUE
OPERATING VOLTAGE(DCV)	DC 9~32V								
RUNNING AMP DRAW(mA) DC12V	350	550	350	550	700	1,100	1,050	1,560	1,500
WEIGHT(g)	440		410		560		700		700
CABLE LENGTH(m)	10								
BODY COLORS AVAILABLE	WHITE, RED, GREEN, BLUE								
LENS	ACRYLIC								
LED SPAN(Hr)	50,000								



DAYTIME RUNNING LIGHT
DRL6



DAYTIME RUNNING LIGHT
DRL8



SPECIFICATION

1. OPERATING VOLTAGE : DC 9 ~ 32V
2. CCT : 5000K / 6000K
3. WATER PROOF (IP68) & DUST RESISTANT
4. TEMPERATURE : -30°C ~ 50°C
5. LIFE SPAN : 50,000Hrs
6. BUILT IN THE DRIVE CIRCUIT

INTRODUCTION

1. LEDs : COB (Chip on Board)
2. LENS : POLY CARBONATE / UV COATING
3. BODY : ALUMINUM(EFFICIENT HEAT DISSIPATION)
4. COVER COLOR : CLEAR / RED / BLUE / YELLOW
5. BODY COLOR : WHITE / BLACK / SILVER
6. BRACKET : STAINLESS STEEL
7. LEADWIRE LENGTH : 1.5M

MODEL	RUNNING AMP DRAW(mA) DC12V	WEIGHT(g)	SIZE(mm)	REMARK
DRL6	415	110	149*29*12	
DRL8	650	155	209*29*12	

■ A FUNCTION FOR DIMMING CONTROLLER WITH 3 LEADWIRES.



CAMPING LIGHT

NO.	Article	Specification
1	Product name	SCORPION
2	Model name	CPL-01
3	LED color	COOL WHITE / WARM WHITE
4	Luminous Flux(lm)	HI : 23 MEDDLE : 15 LOW : 6.7
5	Battery	LI-POLYMER 3.7V / 1,000mA
6	Battery lasting time	HI : 2Hr MEDDLE : 6Hr LOW : 12Hr
7	Lighting step	3 steps of brightness(LOW,MIDDLE,HI), Blinking, (Total 4 steps)
8	Battery charging time(Hr)	2 ~ 2.5
9	size (mm)	97.1 * 39.2 * 13.85(Body)
10	weight(g)	52
11	Input power for charging (mAh)	MICRO USB 5V 500mA
12	Warranty	1 year
13	country of manufacture	Made in Korea



T10 / 0.55W



FESTOON 31 / 1.1W



FESTOON 36 / 1.1W



FESTOON 41 / 1.5W

► FOG LIGHT



SPECIFICATION

1. OPERATING VOLTAGE : DC 9 ~ 32V
2. LED COLOR TEM. : 5,000~5,300K / 5,700~6,000K
3. OPERATING TEM. : -40°C ~ 50°C
4. LIFE SPAN : 50,000Hrs
5. WATER PROOF (IP67)

INTRODUCTION

1. 10W LED : CREE XML / COB 8W *2
2. GLASS : Ø12 * 11(CREE LED)
3. BODY : ALUMINUM(EFFICIENT HEAT DISSIPATION)
4. REFLECTOR : PC / VACUUM METALIZED
5. PROTECTED ESD / SURGE

MODEL		RUNNING AMP DRAW(A) DC12V	WEIGHT(g)	LUMINOUS FLUX(lm) (2,800mA/1,250mA)	REMARK
881	10W CREE LED	0.75	52	900	
	8W COB LED *2	1.1	55	750	
9006	10W CREE LED	0.75	60	900	
	8W COB LED *2	1.1	65	750	
H11	10W CREE LED	0.75	60	900	
	8W COB LED *2	1.1	65	750	
PSX24	10W CREE LED	0.75	65	900	
	8W COB LED *2	1.1	65	750	
PSX26	10W CREE LED	0.75	55	900	
	8W COB LED *2	1.1	55	750	



– MARINE



– MILITARY(IR AVAILABLE)

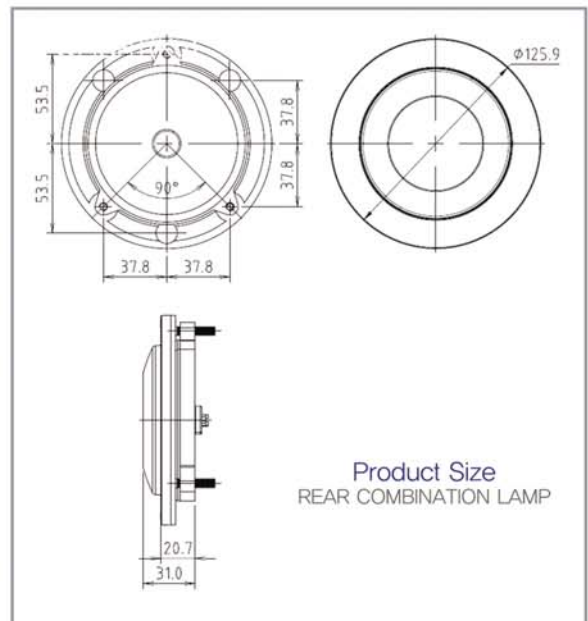


■ ALL HP PRODUCTS CAN CHANGE COLOR FOR USING MARINE(WHITE) & MILITARY(KAKI)

– REAR COMBINATION LAMP



SPECIFICATION	TURN LAMP	BACK LAMP	POSITION	BRACKET
RUNNING AMP DRAW(mA) (12V)	130	120	20	90
WEIGHT(g)	217		200	
REFLECTOR	PC / VACUUM METALIZED			
WATER PROOF & DUST RESISTANT	IP 66			
TEMPERATURE	-30°C ~ 50°C			
HOUSING / COLOR	ABS/BLACK			
LENS	POLY CARBONATE / UV COATING			
HOLDER / BOLT	RED ABS / 5mm			
LIFE SPAN	50,000Hrs			



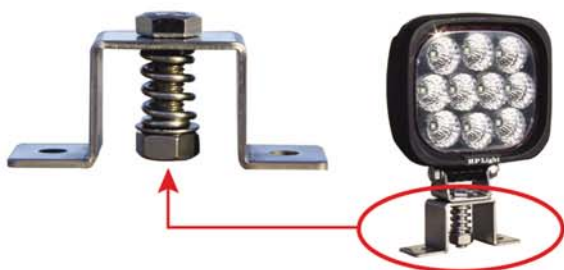
– WIRING HARNESSES



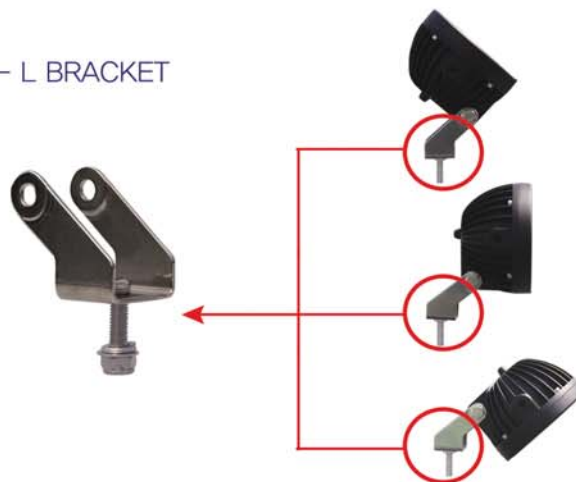
– MAGNET KIT



– Q BRACKET



– L BRACKET



– BILLET TUBE FRAME MOUNT :

0.75" ,1.0" ,1.25" ,1.5" ,1 11/16" ,1.75" ,2.0" ,2.5" ,3.0"

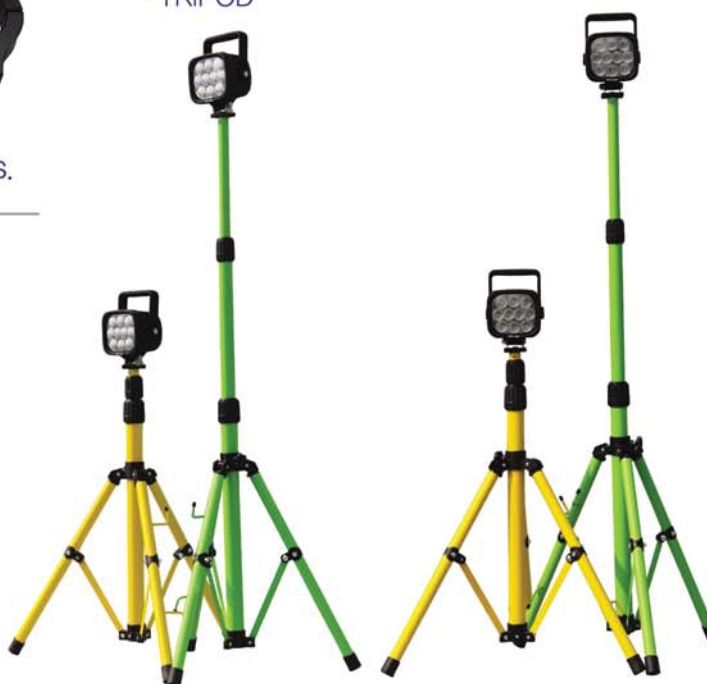


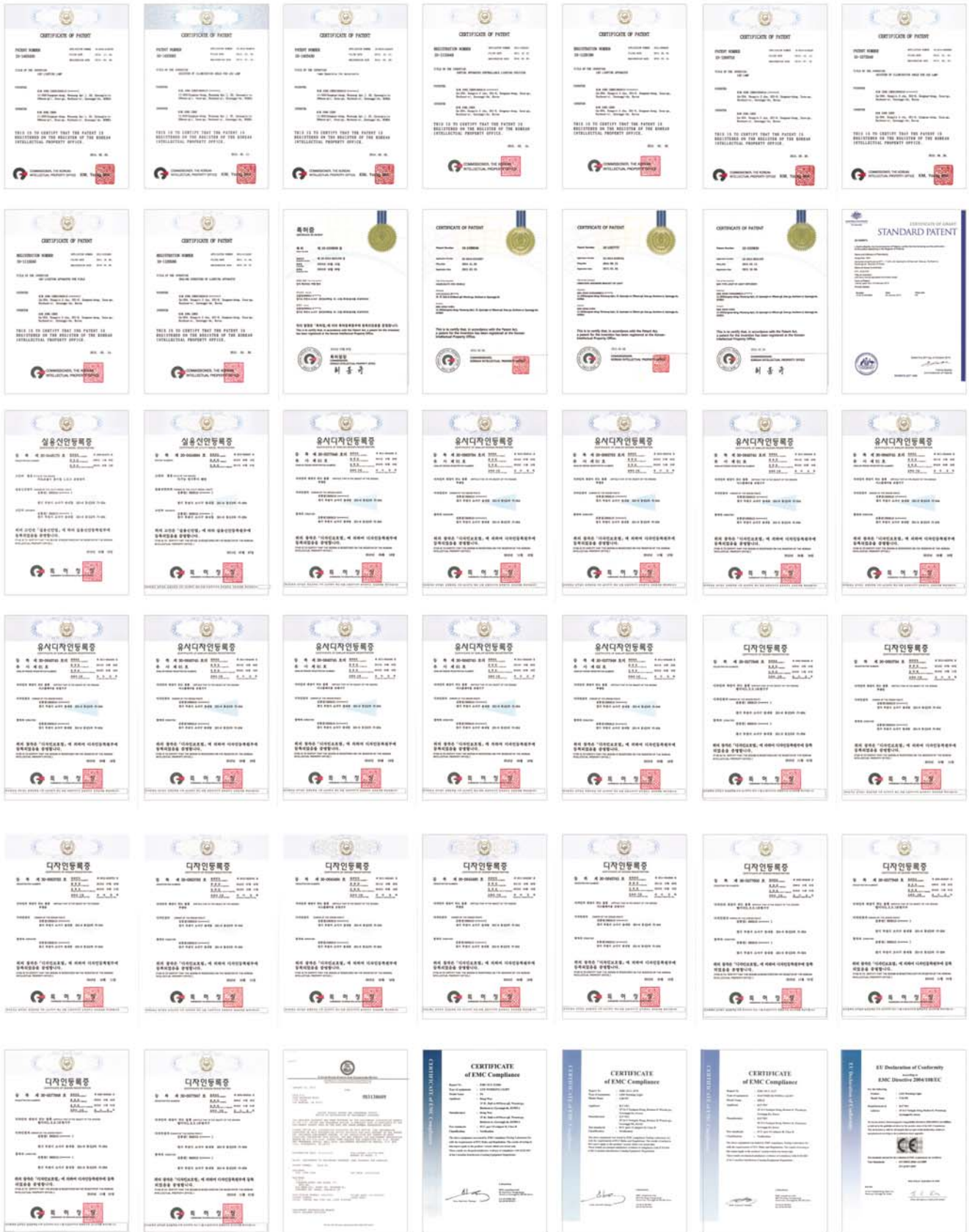
■ LENGTH ADJUSTABLE TO BUYER'S SPECIFICATIONS.

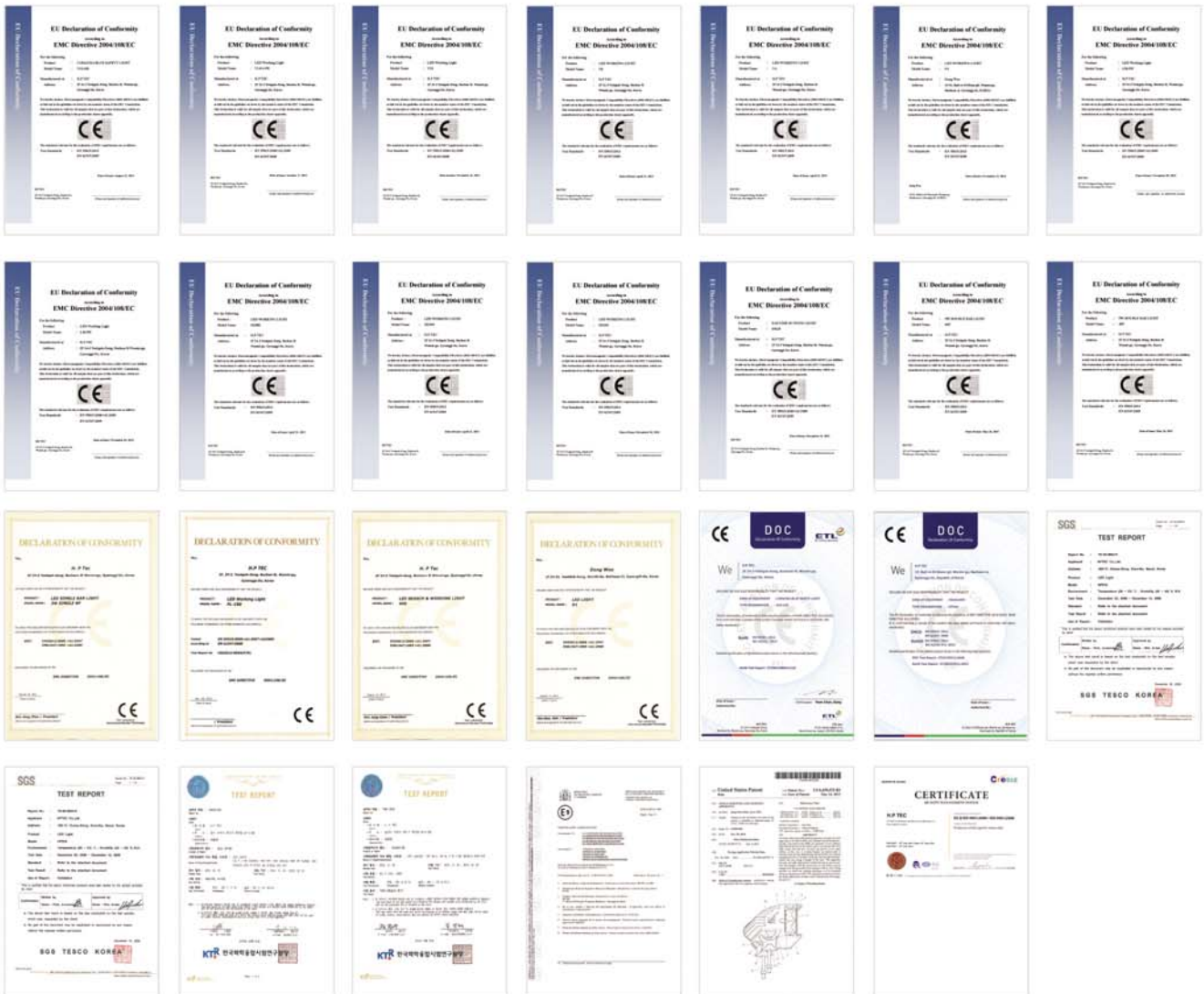
– SWITCH CONTROLLER



– TRIPOD







NO.	CERTIFICATE	REGISTRATION NUMBER
1	CE	10W SINGLE BAR 6P
2		3W SINGLE BAR 8P
3		5W DOUBLE BAR 40P
4		5W DOUBLE BAR 60P
5		V4
6		V8
7		V10-3W
8		V10-5W
9		V10-100V
10		V1414 5W
11		L43 5W
12		L50 5W
13		DRL8
14		400
15		FL-150
16		P1
17		P4
18		HD102
19	HD109	
20	HD582	
21	R7010	
22	R7010	
23	V10 100	
24	DoC	DRL 5W
25		L50 5W
26		P4

NO.	CERTIFICATE	REGISTRATION NUMBER
1	PATENT	20-0448***
2		20-0454***
3		10-1126***
4		10-1129***
5		10-1115***
6		10-1115***
7		10-1289***
8		10-1273***
9		10-1425***
10		10-1403***
11		10-1403***
12		10-1507***
13		10-1498***
14		10-1559***
15		10-15***
16		PCT/KR2013/011***
17	PCT/KR2013/000***	
18	PCT/KR2014/009***	
19	PCT	30-0577***
20		30-0577***
21		30-0577***
22		30-0577***
23		30-0577***
24		30-0577***-2
25		30-0645***
26		30-0577***-1
27		30-0640***
28		30-0645***
29		30-0663***
30		30-0663***
31		30-0663***
32		30-0640***-1
33		30-0640***-1
34		30-0663***-1
35		UNITED STATES PATENT

www.hpiled.com



Copyright(C) 11,2015 Allrights reserved by HP INTERNATIONAL

