



Regulations

WUSV World Championship IP

1. General Provisions

The WUSV World Championship **IP** features a combination ranking based on examination rules of the WUSV INTERNATIONAL EXAMINATION LEVEL 3 (currently analogue to IGP3).

- A) Tracking
- B) Obedience
- C) Defense Work

Only dogs can be admitted who were selected by the national organization of their country of origin (LAO). The participating dogs must pass a WUSV IP3/ IGP 3 examination during the period between the previous WUSV World Championship and the World Championship to come. The handler must be the same person on the occasion of both events. The minimum result obtained at this examination must be 250 points with 80 in each individual section.

Every registered dog must have a WUSV recognized pedigree.

An SV/ WUSV recognized diagnosis for HD and ED must be provided with the results *normal*, *almost normal* or *still admitted*, analogue the FCI requirements A, B, C respectively (0,1). **If more than one diagnosis was obtained, a Veterinary University Clinic that was not involved in the original diagnosis must be consulted for a final diagnosis BEFORE the dog is registered for the event.** This requirement only applies for dogs born from January 01, 2018, on.

Furthermore, a copy of a judge report on a show ranking with a minimum rating of GOOD, obtained at a minimum age of 12 months must be presented. This applies for dogs born from January 01st, 2020 on.

Every national organization is entitled to register a team of five participants plus one substitute. In addition to that, the champion from the previous year (dog and handler) is admitted to the competition.

The dog's owner and the dog's handler must have their **primary residence** within the WUSV member country for which the dog is presented.

Every handler may only present one dog.

Evaluation

- 1) A maximum of 300 points that can be obtained in total.

- 2) In the event of a tie the ranking is carried out in accordance with the examination regulations (PO).

Team Classification

For the team classification the results of the three (3) best dogs of each national organization are considered.

2. WUSV IP 3/IGP 3

A: Tracking Work

Laying of the tracks

The laying of the tracks is carried out in accordance with a regular gait. The corners of the tracks shall not be marked. The starting points shall not be tread-down. Replacement tracks are considered in terms of the schedule planning and shall be provided if necessary. The tracking objects will not be laid out in a particular order or sequence.

Tracking Objects

The tracking objects are made from the following materials

- Wood
- Leather
- Felt



Size of the tracking objects approximately 10 cm by 3 cm by 0,5-1,0 cm

The tracking board and the objects are made available by the hosting organization. All objects are clearly marked.

Group Drawing in the Tracking Grounds – Identity Check

Upon registration of the dog handlers for tracking work a drawing is carried out. The drawing starts as soon as the last dog of the previous group has started with the tracking work examination. Dog handlers who are not available in the tracking grounds by their starting time are also considered during the drawing. The number drawn remains reserved for the handler and can be worked out at a later time. In case that the handler does not arrive before his or her team has finalized their exercises the handler affected shall be disqualified from the competition. The identity check of the dogs is being carried out following the tracking work examination.

Inspection of the Tracking Lead

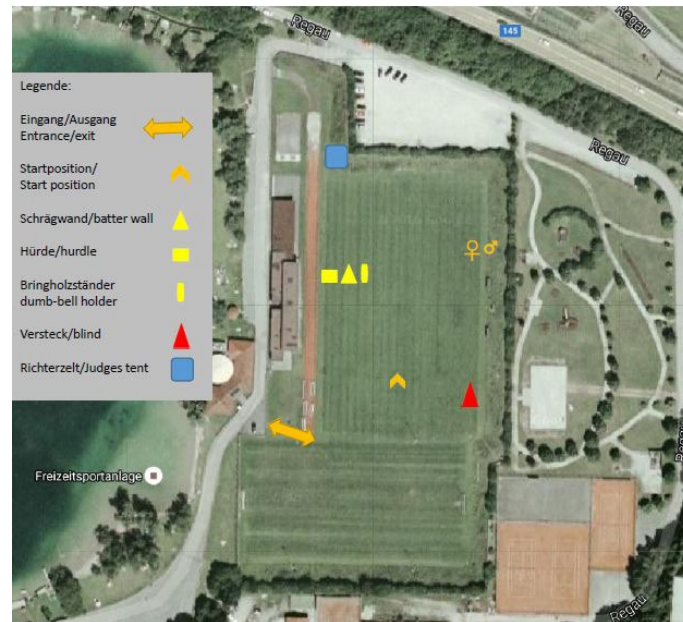
After the drawings the tracking leads shall be inspected by a person who was authorized for this task by the manager for tracking. The lead is to be checked for the correct length and to be marked accordingly. The tracking exercises may only be carried out with the previously marked lead.

B: Obedience

For details in terms of the running direction please refer to scheme. The dogs are presented in accordance with the running direction as defined in the examination regulations.

The handlers may wear casual and sporty clothes (e.g., a sweat suit). Special handler vests for training are not admitted.

- **Photo Aerial View/ Stadium Plan/ Sketch (according to example below)**



Admission Control

The collar inspection is immediately carried out in the respective area for preparation. A visual inspection is not allowed. The collar must be handed over to the commissioner who will inspect it for compliance with the examination regulations. Once, the collar was admitted by the trial judge no change of collar is admitted anymore.

An area of suitable size and located in the immediate vicinities of the competition shall be made available to the participants in preparation for the examination for obedience and defence work.

The participating dog must arrive approximately 10 minutes before the scheduled starting time at the designated area for preparation. The team captain has to report the handler as ready 15 minutes at the latest before the scheduled starting time at the entrance area.

The dog may only be presented with a collar on as stipulated in the examination regulations (PO). The handler must carry a lead with him or her at any time. The lead may only be attached to the collar of the dog. Further leashes or ropes on the dog are not admitted. The dog handler may prepare the dog for the competition with positively associated objects (but no whips and such) or with food. Further means are not admitted. In case of an infringement the dog shall be disqualified from the competition.

The trial judge in charge is responsible for the supervision of the preparation area for obedience and defence work.

Identity Check

Prior to the review of the dog's performance during the examination, the judge in charge of the respective section carries out the identity check at the stadium. During the chip verification the dog shall stand or sit and is to be kept on a long lead. However, the dog

handler is allowed to turn the dog's head slightly to the side with his or her hand. The dog handler him- or herself is not allowed to read out the chip.

Scanners for microchip verification according to ISO (International Organization for Standardization) will be made available to the staff in charge.

After the trial judge has announced his or her evaluation of the dog's performance, the animal must be led off the field in a controlled fashion and the dog needs to behave in a neutral manner. Misbehaviour, displacement activities (such as biting into the rope) can lead to a disqualification of the dog.

Prize Awarding

The official end of the event is marked by the announcement of the results (awarding ceremony) and by the return of the score book. Until and including the awarding ceremony the handlers must present their dogs in a sporty and impeccable manner. The dogs must act in a neutral fashion at any time. Misbehaviour, displacement activities (such as biting into the rope) can lead to a disqualification of the dog.

Group of Three Regulation for Obedience Exercises

For example, Starting Numbers 1,2,3

All the three teams (i.e., three handlers with their dogs) must register with the trial judge at the beginning of the obedience exercises.

- 1) Starting number 01 starts with the examination exercise, meanwhile starting number 02 performs the down position, and starting number 03 returns to the preparation area once more.
- 2) Starting number 03 continues with the examination exercise, starting number 01 performs the down position, and starting number 02 returns to the preparation area.
- 3) Starting number 02 continues with the examination exercise, starting number 03 performs the down position, and starting number 01 returns to the preparation area.

Hurdles/ Objects for Retrieval/ Pistols

Hurdles according to the valid examination regulations are made available. The A-frame is equipped with wooden strips and a slip-proof coating. The hurdles are removed from the exercise field during the defence work – the positions shall be marked.

The weight and dimensions of the objects for retrieval correspond with the examination regulations (PO). All retrieval exercises shall be carried out in running directions. The test for gun shyness (calibre 6 mm) shall be carried out on the first straight line.

Place for Down Position

Males and females perform the down position at different sites. The places are marked accordingly.

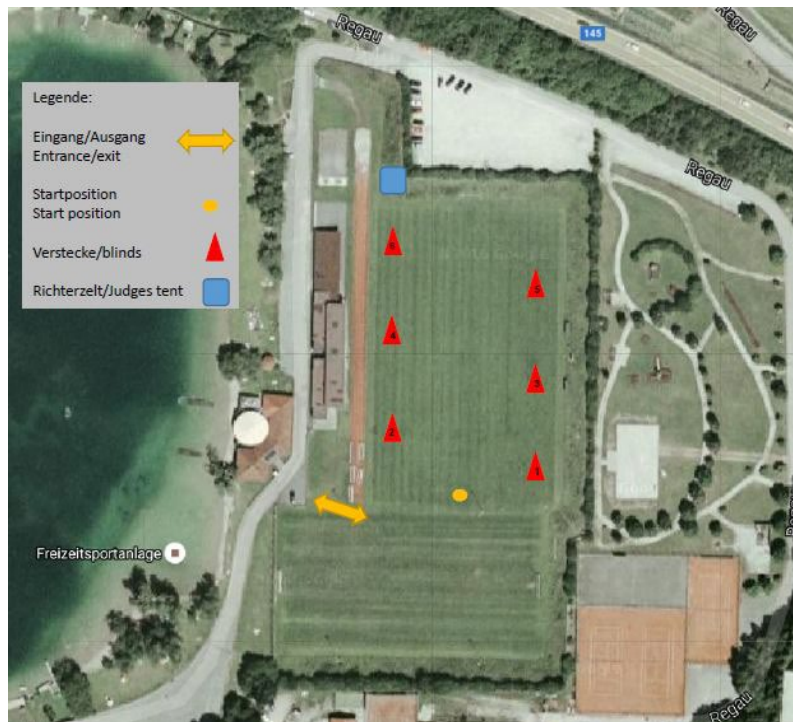
C: Defence Work

General Provisions

The defence work is to be performed on the sports ground. For the running direction please refer to the scheme. The first send out at the patrol for the helper goes to the right/ to the left (depending on the situation on site). The required markings for handler and helper will be made according to the IPO regulations. The selection of the helpers and the defence work training will be held according to the schedule provided.

The dog handler can wear light sportive clothing – however – no special training vest are permitted.

Sample Sketch



Entry and Identity Check

For details, please refer to section B for obedience.

Helpers – Defence Work

The final selection of the helpers for defence work and their respective substitutes shall take place before the presentation of the trial dogs on an external site by the WUSV-Coordinator IP, the WUSV-Head Judge and the Judge for Section C. The selected helpers shall be presented on the occasion of the presentation of the trial dogs.

Protective Clothing

The standard protective clothing for helpers is as follows: jacket, trousers, a protection sleeve and cleated shoes. Soft sticks (*Softstöcke*) are to be used during the examinations. The brand is left up to the helpers' discretion.

Hiding Places – Protection Blinds

The hiding places provided will be standard tents for defence work. The blinds and hiding places are removed from the exercise field while obedience examinations are performed on the same site. The positions shall be marked.

3. WUSV World Championship IP Program

On SUNDAY

- 10.00 – 16.00 h Registration of all Teams at the Competition Office
- 10.00 - 16.00 h Veterinary Examinations
- The teams are supposed to consult the veterinary doctor together as a group

On MONDAY

- 07.00 - 17.00 h Official Training
- 08.00 – 12.00 h Veterinary Examinations
- The teams are supposed to consult the veterinary doctor together as a group
- 07.00 - 17.00 h Official Training

On TUESDAY

- 07.00 – 13.00 h Official Training **VENUE tbd.**
- 13.00 – 14.00 h Judge Meeting at **PLACE:**
- 14.15 – 15.00 h Trial Defense Work
- 15.30 – 17.00 h Team Captains Meeting
- 19.00 – 23.00 h Opening Ceremony

On WEDNESDAY

- 07.00 h – Performance Section B – Obedience, and Section C – Protection Work at the Stadium
- 08.30 h – Performance Section A – Tracking Work

On THURSDAY

- 07.00 h – Performance Section B – Obedience, and Section C – Protection Work at the Stadium
- 08.30 h – Performance Section A – Tracking Work

On FRIDAY

- 07.00 h – Performance Section B – Obedience and Section C – Protection Work at the Stadium
- 08.30 h – Performance Section A – Tracking Work

On SATURDAY

- 07.00 h – Performance Section B – Obedience, and Section C – Protection Work at the Stadium
- 08.30 h – Performance Section A – Tracking Work
- 20.00 h – Festive Evening

On SUNDAY

- 07.30 h – Performance Section B – Obedience and Section C – Protection Work at the Stadium
- 15.30 h – Prize Giving and Closing Ceremony
- Following the Closing Ceremony, the debriefing meeting of the Team Captains will be held, and documents handed over.

The program is subject to change – depending on the number of dogs registered to the event.