

## Parts List

### 8115.390 Minette Inox





---

# Table of Contents

<b>Introduction</b> .....	<b>2</b>
Specially approved products.....	2
<b>Product Description</b> .....	<b>3</b>
The data plate.....	3
<b>Exploded Views</b> .....	<b>4</b>
8115.390.....	4
<b>Spare Parts</b> .....	<b>5</b>
8115.390.....	5

# Introduction

## **Purpose of this manual**

The purpose of this manual is to provide necessary information on spare parts and accessories order.

## **Disclaimer**

Always use genuine Grindex parts. The use of other spare parts or accessories can invalidate any claims for warranty or compensation. Grindex does not take any responsibility for damages that are caused by the use of non-original parts. For more information, contact your local sales and service representative.

## **Data for ordering spare parts**

The following information is needed for spare part orders:

- Serial number of the product
- Part number
- Quantity of bulk material, see \* in tables

## **Specially approved products**

### **Qualification of personnel**


Only Grindex or Grindex-authorized service personnel may undertake repair work on Ex-approved products.

### **Dimensional accuracy inspection**

Spare parts marked with (Ex) after the part number are subject to dimensional accuracy inspection.

# Product Description

## Products included

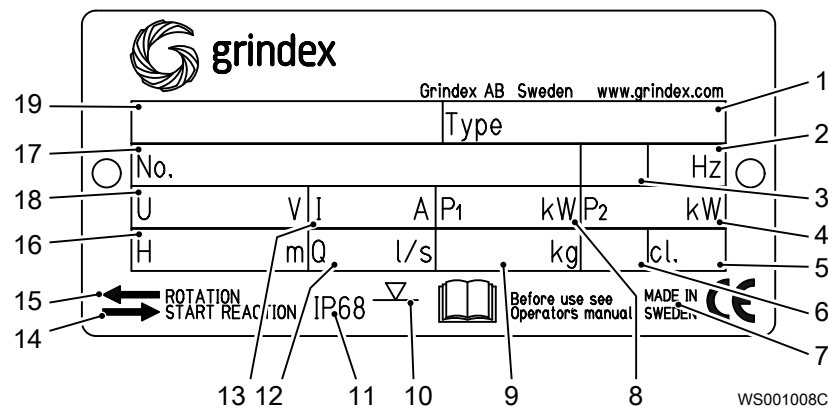
Pump model	Approvals
Minette INOX 8115.390	Standard European Norm (EN) <ul style="list-style-type: none"> <li>• ATEX Directive</li> <li>• EN 1127-1, EN 60079-0, EN 60079-15</li> <li>•  II 3G Ex nA/nC c IIC T1...T4</li> </ul>

## The data plate

### Introduction

The data plate is a metal label located on the main body of the pump. The data plate lists key product specifications.

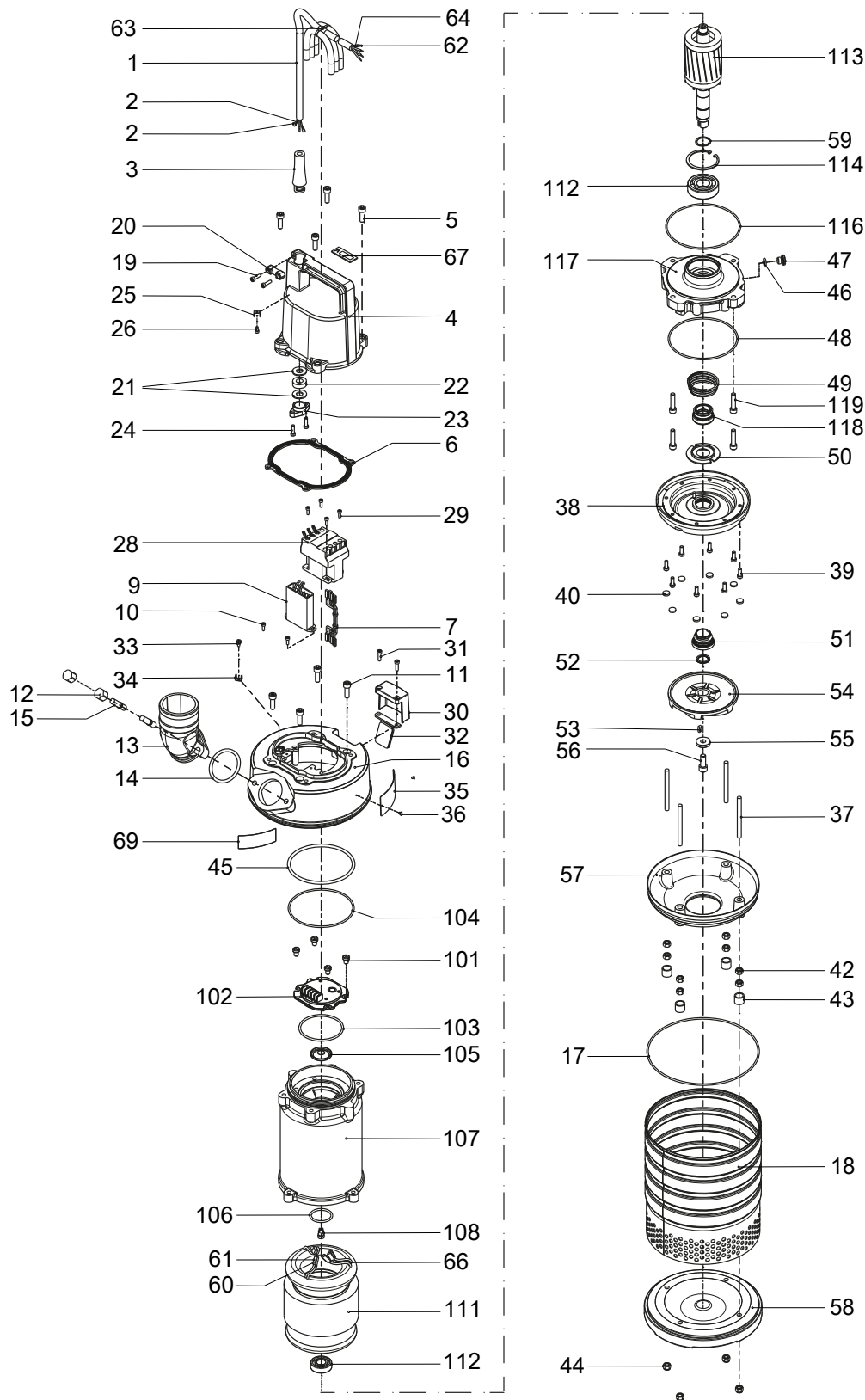
### The data plate



1. Pump type number
2. Frequency
3. Phases, type of current
4. Rated shaft power
5. Thermal class
6. Locked rotor code-letter
7. Country of origin
8. Maximum power consumption
9. Product weight
10. Maximum submersion depth
11. Degree of protection
12. Maximum capacity
13. Rated current
14. Direction of the start reaction
15. Direction of the impeller rotation
16. Maximum head
17. Serial number
18. Rated voltage
19. Pump model

# Exploded Views

## 8115.390



20183A\_8115\_390\_expl\_view

# Spare Parts

## 8115.390

Pos. No	Part. No	Denomination	Qty/ Version
			390
1	131 040	Motor cable subcab Starter (Phase shifter) 3-phase 220V - 575 V Current range: 0 - 16 A SUBCAB 4G1,5 10,50 - 11,50mm	*
1	131 039	Motor cable subcab SUBCAB 4G2,5 12,50 - 13,50mm	*
1	410 065	Motor cable subcab SUBCAB 14AWG/4 14,20 - 15,20mm Starter (Phase shifter) 3-phase 220V - 575 V Current range: 0 - 16 A	*
2	50 040 04	Flat pin sleeve 1-2.5MM2	4
2	50 040 05	Insulating sleeve 0.5-6 MM2	4
3	50 428 00	Bending protection SUBCAB 4G1,5 10,50 - 11,50mm	1
3	50 428 01	Bending protection SUBCAB 4G2,5 12,50 - 13,50mm	1
3	50 428 02	Bending protection SUBCAB 14AWG/4 14,20 - 15,20mm	1
4	50 709 00	Cover	1
5	50 021 30	Hex.socket hd screw M8X25-A4-80	4
6	50 038 01	Gasket	1
7	50 035 01	Cable unit	1
9	51 511 05	Motor protector SMART 50Hz 500V 50Hz 380V - 415V For DOL start	1
9	51 511 06	Motor protector SMART 60Hz 440V - 460V 60Hz 575V - 600V	1
10	50 018 00	Hex.socket hd screw	2
11	50 021 30	Hex.socket hd screw M8X25-A4-80	4
12	50 022 25	Acorn nut	2
13	50 733 00	Discharge connection DN 75 Hose	1
13	50 733 01	Discharge connection DN 75 Thread : ISO G3A Outer	1
13	50 733 02	Discharge connection DN 75 Thread : NPT 3-8 Outer	1
14	50 037 08	O-ring	1
15	50 022 21	Stud	2
16	50 738 00	Main cover	1
17	50 037 14	O-ring	1
18	50 061 03	Outer casing	1
19	50 019 00	Hex.socket hd screw M5X18-A4-70	2

Pos. No	Part. No	Denomination	Qty/ Version
			390
20	50 725 00	Cable clip	1
21	50 016 13	Plain washer	2
21	50 016 14	Plain washer	2
21	50 016 15	Plain washer	2
22	50 015 00	Seal sleeve (10)-12 MM	1
22	50 015 01	Seal sleeve (12)-14 MM	1
22	50 015 02	Seal sleeve (14)-16 MM	1
23	50 726 00	Entrance flange	1
24	50 019 00	Hex.socket hd screw M5X18-A4-70	2
25	50 119 00	Flat pin sheet	1
26	133 525	Earthing screw	1
28	50 353 01	Contacteur	1
28	50 353 03	Contacteur	1
28	50 353 06	Contacteur	1
29	50 018 00	Hex.socket hd screw	4
30	50 722 00	Air release valve	1
31	50 019 00	Hex.socket hd screw M5X18-A4-70	2
32	50 013 00	Air release valve	1
33	50 018 04	Hex.socket hd screw	1
34	50 119 00	Flat pin sheet	1
35	50 888 00	Plate-blank	1
36	410 393	Drive screw 4X5-A4	2
37	50 021 34	Stud	4
38	50 577 02	Oil housing coated	1
39	50 020 18	Hex.socket hd screw	8
40	140 359	Protective washer	8
42	50 021 37	Hexagon nut M8-A4-70	8
43	130 836	Protection sleeve	4
44	50 021 36	Lock nut M8-A4-70	4
45	50 037 07	O-ring	1
46	50 037 13	O-ring	1
47	50 705 00	Inspection screw	1
48	50 037 15	O-ring	1
49	50 559 01	Compression spring	1
50	50 740 00	Plate	1
51	50 789 00	Mechanical seal	1



Pos. No	Part. No	Denomination	Qty/ Version	
			390	
52	50 750 00	Adjusting washer	8	
53	50 205 03	Parallel key 2306-5X5X14-A4-220HB	1	
54	50 798 00	Impeller 50Hz	1	
54	50 798 01	Impeller 60Hz	1	
55	50 022 27	Plain washer	1	
56	133 148	Hex.socket hd screw	1	
57	50 702 00	Diffuser coat.	1	
58	50 719 00	Strainer bottom	1	
59	130 818	Retaining ring 25- SPRING STEEL	1	
60	50 040 05	Insulating sleeve 0.5-6 MM2	5-8	
61	50 040 04	Flat pin sleeve 1-2.5MM2	6-leads 3-phase 50 Hz 2-poles 380V-415V Y 220V-230V D P2=2kW	8
61	50 040 09	Flat pin sleeve 0.75-1.5MM2	6-leads 3-phase 50 Hz 2-poles 500V-550V Y P2=2kW 9-leads 3-phase 60 Hz 2-poles 440V-460V YSER 220V-230V Y// P2=2,30kW/3,10hp 6-leads 3-phase 60 Hz 2-poles 575V-600V Y P2=2,30kW/3,10hp	5-8
62	50 221 02	End sleeve 2.5 MM2; L=7 MM	4	
63	105 839	Cable tie 98X2.5 MM	1	
64	-	Marking tape	1	
65	410 053	Oil ISO VG 32	*	
66	410 139	Insulating hose D=12 MM	*	
67	50 898 00	Marking tape	1	
68	50 509 00	Cable set	1	
69	50 992 00	Sticker CUT HAZARD	1	
70	51 735 00	Sticker	2	
71	51 622 00	Connection plate	1	
72	410 034	Closed-end splice 3-6(AWG 12-10) L=18	3	
101	50 021 31	Slotted head screw	4	
102	50 009 00	Connection term boar	1	
103	50 037 27	O-ring	1	
104	50 037 09	O-ring 119.5X3 FPM	1	
105	140 365	Cover	1	
106	50 037 11	O-ring	1	

Pos. No	Part. No	Denomination	Qty/ Version	
			390	
107	50 711 00	Stator housing	1	
108	410 034	Closed-end splice 3-6(AWG 12-10) L=18	3	
111	50 042 05	Stator 14-07-2b	6-leads 3-phase 50 Hz 2-poles 380V-415V Y 220V-230V D P2=2kW	1
111	50 042 09	Stator 14-07-2b	6-leads 3-phase 50 Hz 2-poles 500V-550V Y P2=2kW	1
111	50 042 14	Stator 14-07-2b	9-leads 3-phase 60 Hz 2-poles 440V-460V YSER 220V-230V Y// P2=2,30kW/3,10hp	1
111	50 042 16	Stator 14-07-2b	6-leads 3-phase 60 Hz 2-poles 575V-600V Y P2=2,30kW/3,10hp	1
112	140 362	Ball bearing	1	
113	50 729 00	Shaft unit	1	
114	140 064	Retaining ring SGH 62	1	
115	140 363	Ball bearing 6305 25X62X17	1	
116	50 037 16	O-ring 144.5X3 FPM	1	
117	50 713 00	Bearing holder	1	
118	50 534 00	Mechanical seal	1	
119	50 021 28	Hex.socket hd screw M8X35-A4-80	4	
120	-	Sticker	1	
300	50 102 00	Phase shifter	1	
400	50 100 00	Plug contact	3-phase 380V - 415 V Supply connection CEE 5-PLUG 16A	1
400	50 100 10	Plug contact	500V - 16 A	1
800	50 085 14	O-ring kit	1	
801	51 794 00	Zinc anode kit	1	
900	51 171 00	Basic repair kit	1	





Turoteknikk Drift AS, Hildertunet 2, N-1341 Slependsen, Norway  
+47 67806300—mail@turoteknikk.no—www.turoteknikk.no

---



[www.grindex.com](http://www.grindex.com)

Grindex  
Gesällvägen 33  
174 87 Sundbyberg  
Sweden  
Tel: +46-8-606 66 00  
Fax: +46-8-745 53 28  
[www.grindex.com](http://www.grindex.com)

Visit our Web site for the latest version of this document  
and more information

The original instruction is in English. All non-English  
instructions are translations of the original instruction.

© 2014 Grindex