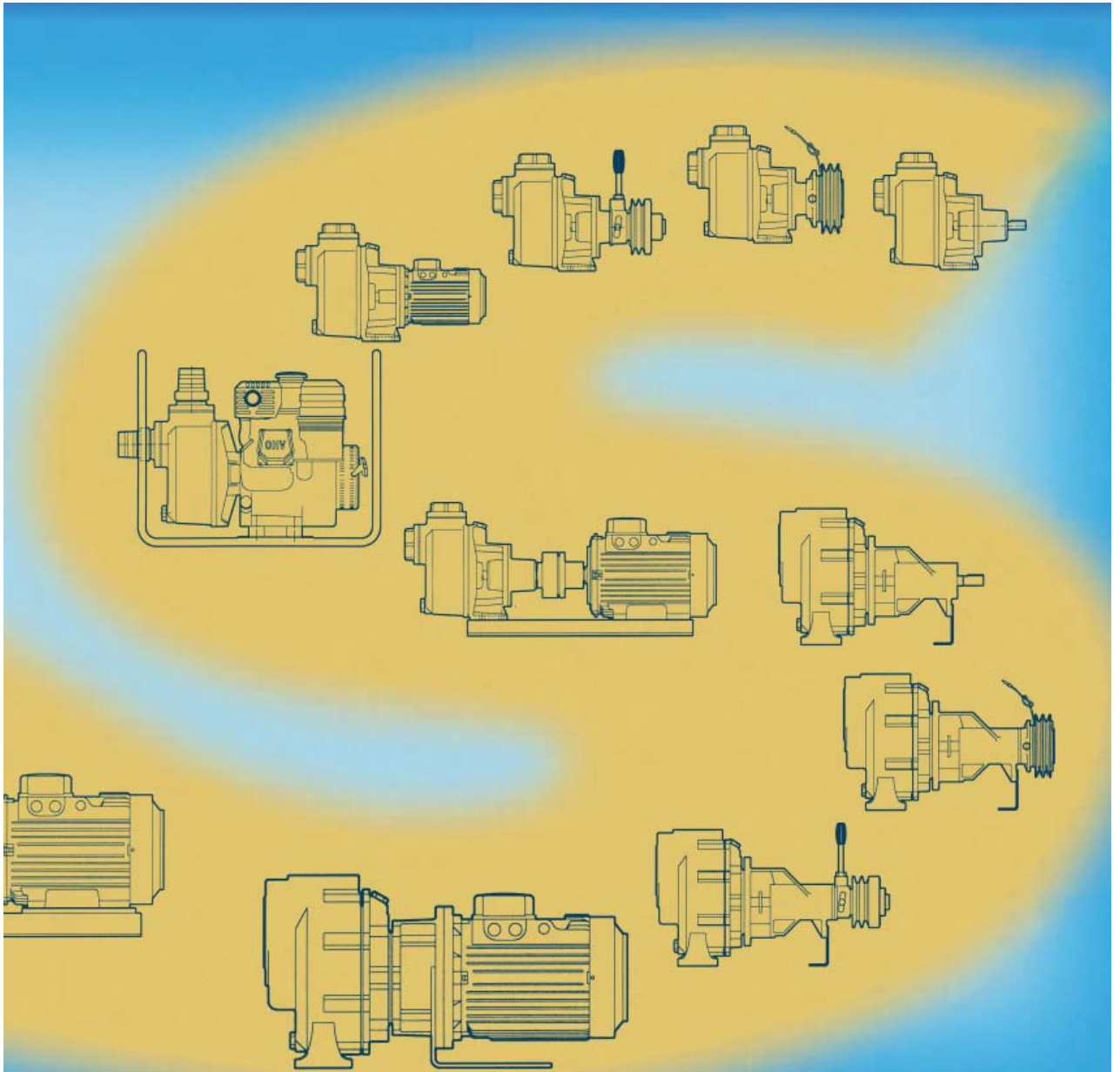
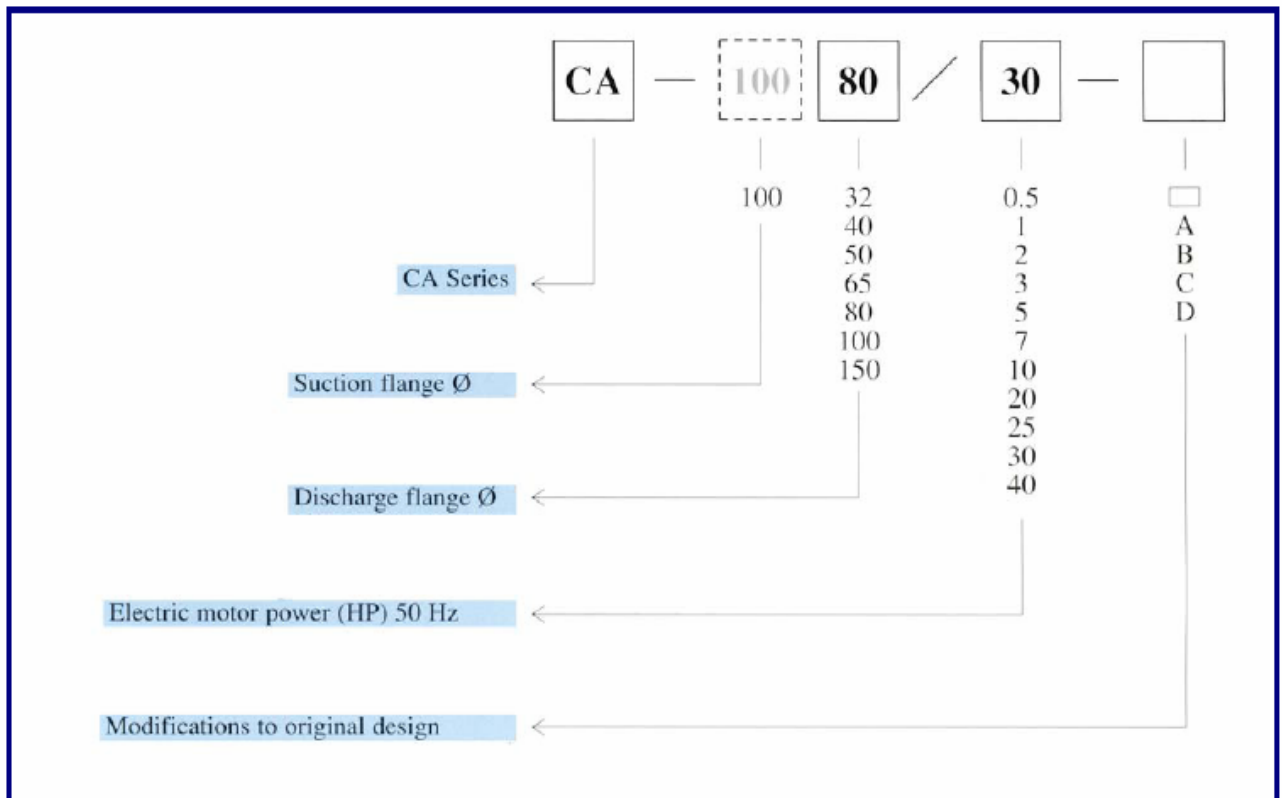


SELFPRIMING CENTRIFUGAL PUMPS SERIES CA



DESCRIPTION

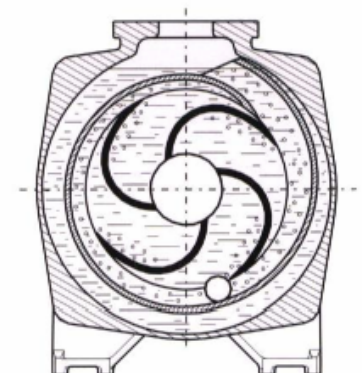


Operation

First time, once the pump is filled with liquid, the pump is started. The impeller circulates the liquid inside the pump, causing an air-liquid mixture pumping compression. The mixture is separated on the diffuser upper part, escaping the gas through the discharge pipe, returning the liquid to the diffuser lower part and creating vacuum on the suction area. This vacuum draws the air from the suction pipe and mixes it with the pump liquid.

Once all the air has been evacuated, the pump gets filled with liquid, operating as a normal centrifugal pump. Furthermore, due to its cared design, when it is stopped, the pump emptying is avoided, remaining enough liquid on pump casing for next start up.

If for any reason an air entrance is produced during operation, the pump gets unprimed and the before mentioned priming cycle is repeated. On the other hand, during pump priming, ensure all discharge valves are open, in order to allow air exit.



APPLICATIONS

- **Marine:**
Ballast, bilge, fire fighting, engine cooling, general services.
- **Industrial:**
Transfer, circulation, low pressure feeding of all kind of liquids.
- **Domestic:**
Draining of garages, channels, swimming pool and pond
Irrigating water supply, gray and dirty waters pumping.

GENERALITIES

The advantages of the CA series centrifugal self priming pumps are:

- Self priming – They do not require any suction foot valve
- Back pull-out design – Disassembly without pipe removal
- Heavy radial ball bearing – Lubricated by grease
- Double rotation sense possibility - assembling interchangeable diffuser and impeller. Types CA 50/3 and CA 50/7 available in both rotation senses. Rest available under requirement
- Easy pump renewal – by means of impeller and diffuser replacement

DRIVING AND EXECUTIONS

The CA series pump can be supplied in bare shaft execution, mounted in common base plate with pump motor flexible coupling, in monobloc execution, with petrol or diesel engine, electric motor, hydraulic, pneumatic or driven by clutch and pulley or electromagnetic clutch.

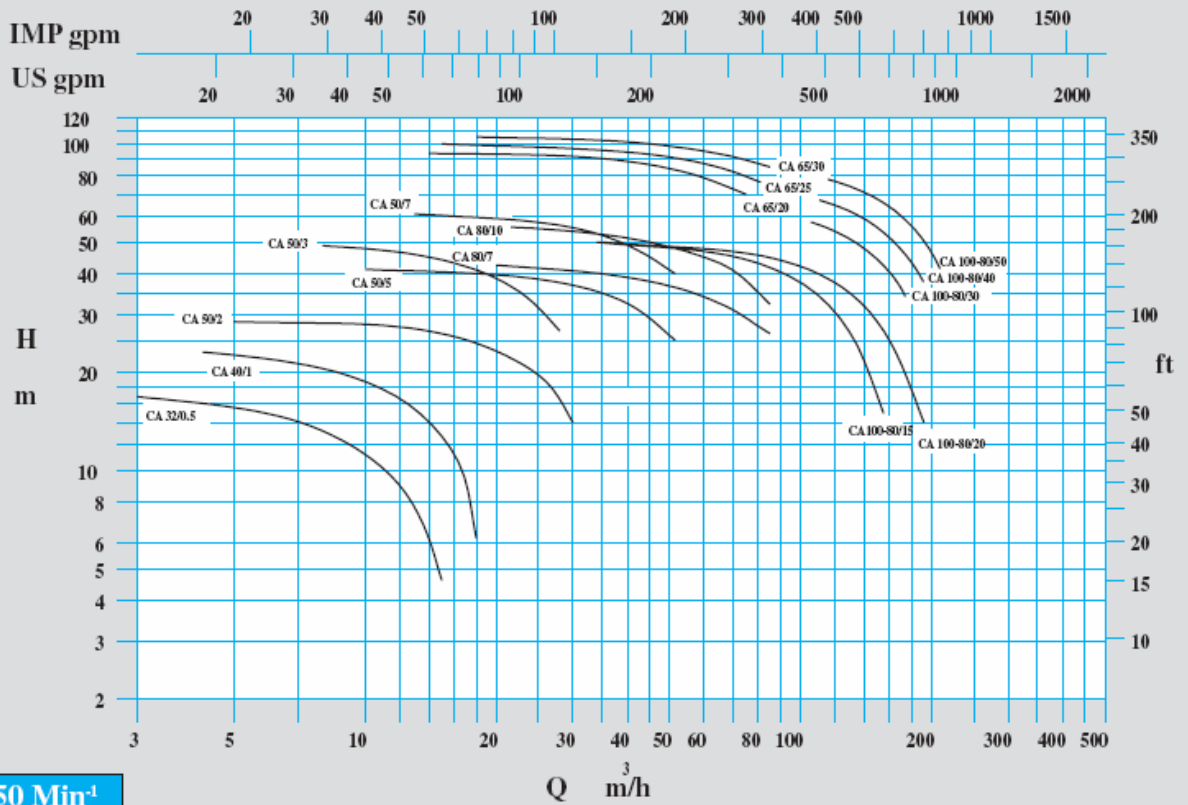
MATERIALS

Pump casing	Bronze G-CuSn5ZnPb(Rg5)	GG25
Cover	Bronze G-CuSn5ZnPb(Rg5)	GG25
Diffuser	Bronze G-CuSn5ZnPb(Rg5)	GG25
Impeller	Bronze G-CuSn5ZnPb(Rg5)	GG25
Shaft	Stainless steel X5CrNiMo18.10 (AISI 316)	Stainless steel X5CrNiMo18.10 (AISI 316)

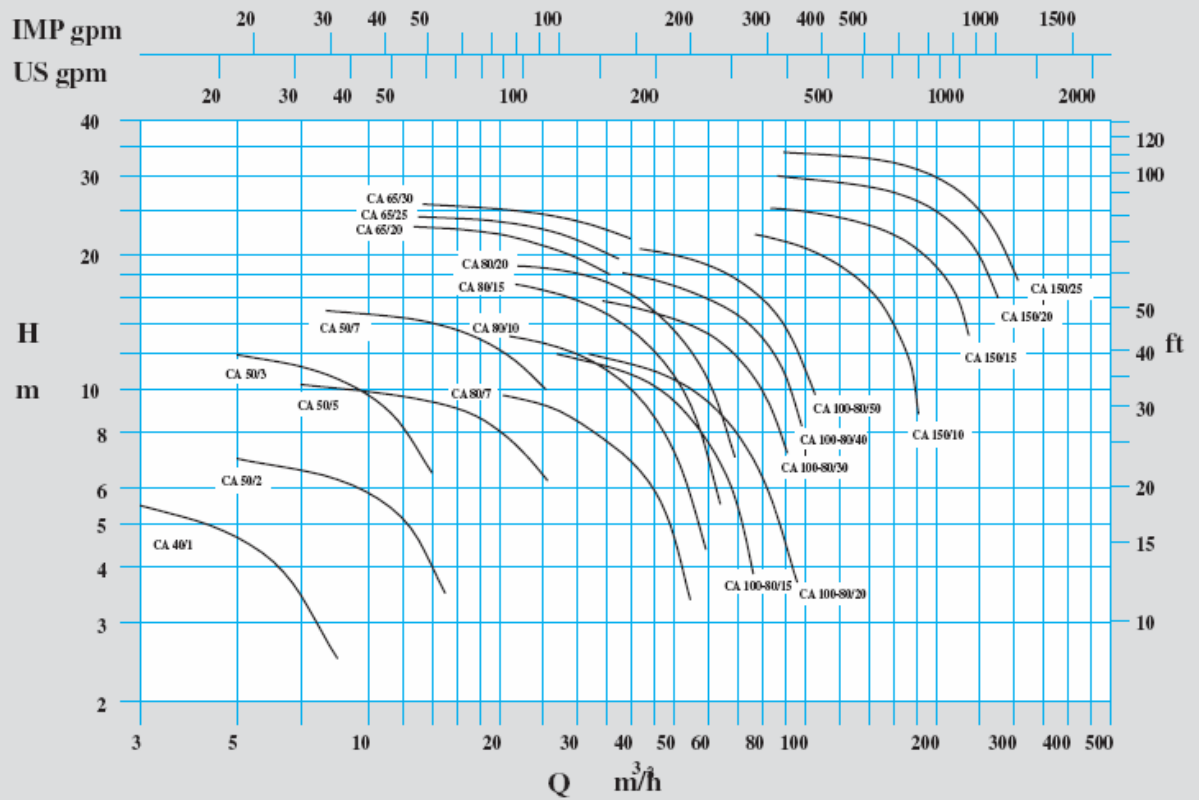
Under requirement the different components can be manufactured in various different materials as nodular cast iron GGG 40, bronze Rg10, aluminum bronze or casted stainless steel.

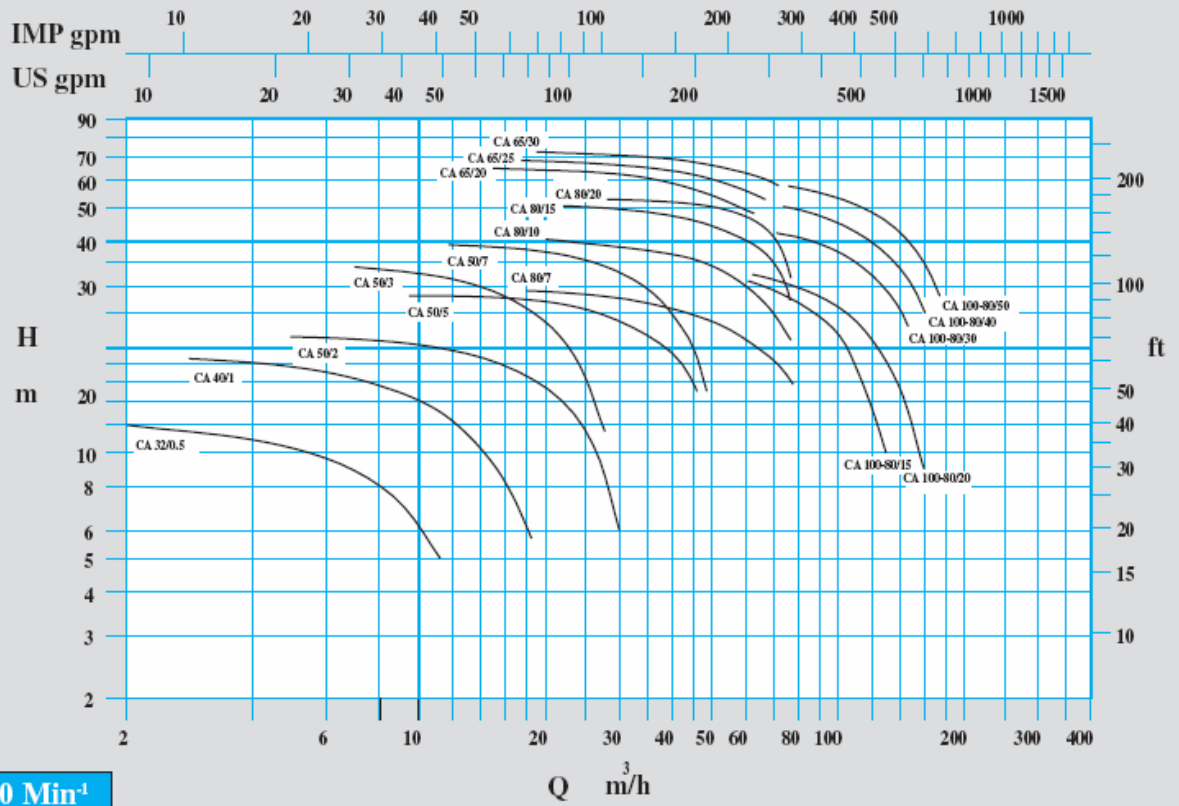
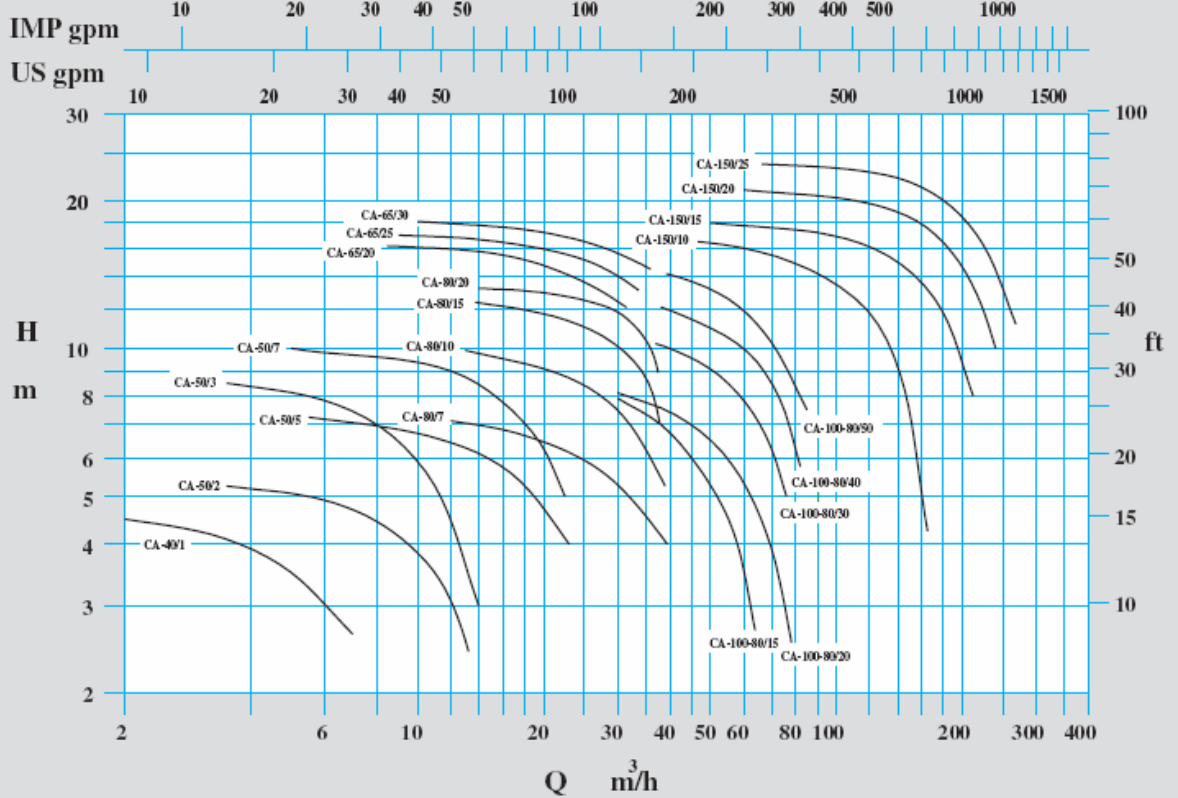
PERFORMANCE GRAPHS

3.500 Min⁻¹

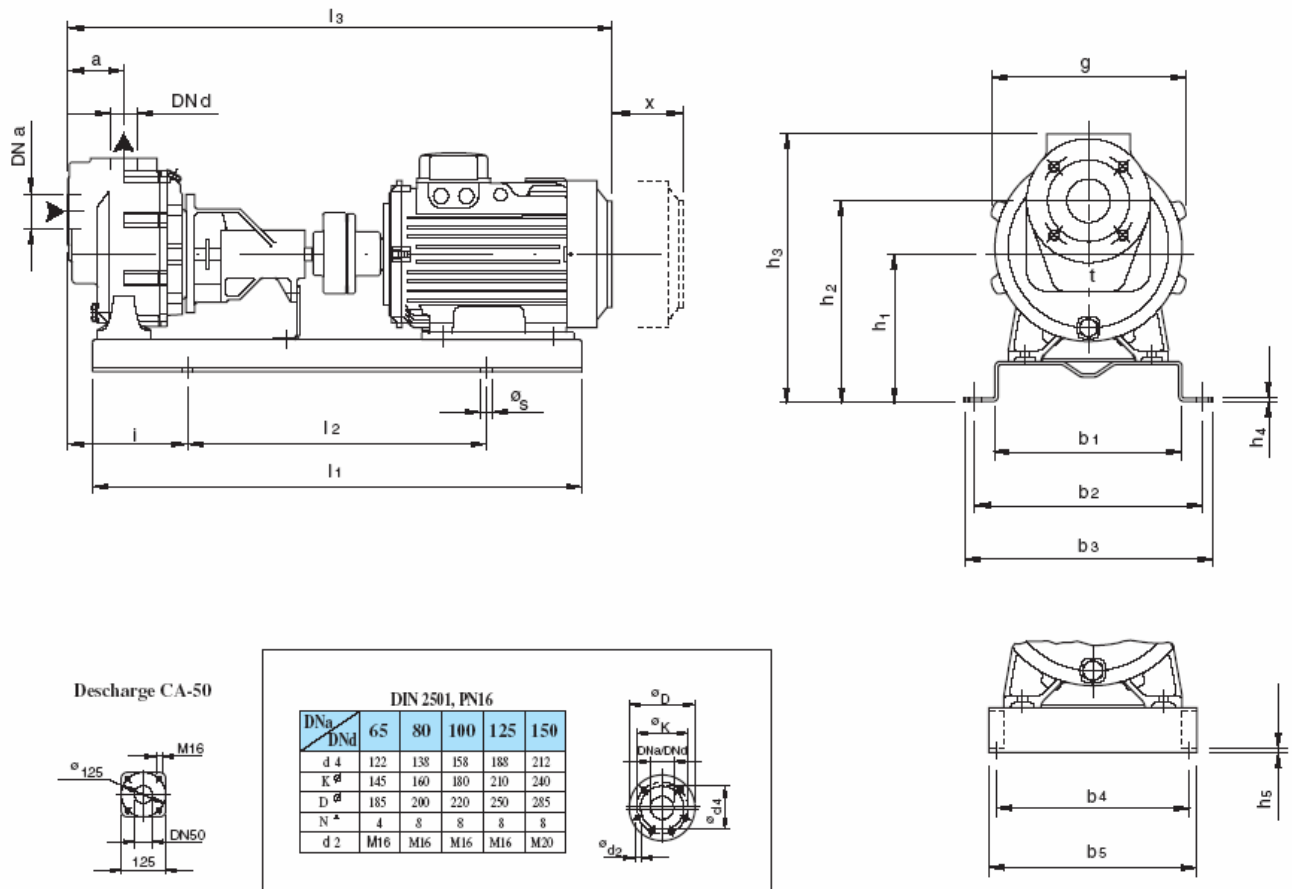


1.750 Min⁻¹



2.900 Min⁻¹

1.450 Min⁻¹


DIMENSIONS
SERIE CA
BASE SUPPORT EXECUTION



2900/3500 R.P.M.

Type	Motor		DN _a	DN _d	a	h ₁	h ₂	h ₃	h ₄	h ₅	b ₁	b ₂	b ₃	b ₄	b ₅	s	i	g	x	l ₁	l ₂	l ₃	kg
	KW	HP																					
CA-50/5A	4	5,5	65	50	105	220	300	400	7	-	270	320	350	-	-	18	190	290	75	800	500	900	120
	7,5	10																		900	600	995	140
CA-50/7A	5,5	7,5	65	50	105	220	300	400	7	-	310	360	390	-	-	18	195	290	75	1000	690	1175	150
	11	15																		1000	690	1175	150
CA-65/15A	11	15	65	65	120	250	360	460	7	-	380	440	470	-	-	18	198	345	100	1000	690	1205	200
	18,5	25																		1100	700	1205	220
CA-65/20A	15	20	65	65	120	250	360	460	7	-	380	440	470	-	-	18	198	345	100	1000	690	1205	210
	22	30																		1100	700	1255	250
CA-65/20A	30	40	65	65	120	310	420	520	-	10	-	-	-	380	420	20	293	345	100	1200	700	1325	350
	18,5	25																		1100	700	1205	220
CA-65/25A	18,5	25	65	65	120	250	360	460	7	-	380	440	470	-	-	18	243	345	100	1100	700	1205	220
	30	40																		1200	700	1325	350
CA65/30A	22	30	65	65	120	250	360	460	7	-	380	440	470	-	-	18	243	345	100	1100	700	1255	250
	30	40																		1200	700	1325	350

Subject to alterations

2900 / 3500 R.P.M.

CA-80/7A	5,5	7,5	80	80	135	250	345	455	7	-	310	360	390	-	-	18	210	325	75	900	600	1035	150														
	11	15															215	325	75	1000	690	1215	190														
CA-80/10A	7,5	10															210	325	75	900	600	1035	155														
	15	20															215	325	75	1000	690	1215	200														
CA-80/15A	11	15															260	325	75	1100	700	1215	210														
	18,5	25															215	325	75	1000	690	1215	200														
CA-80/20A	15	20															380	440	470	-	-	18	260	325	75	1100	700	1265	235								
	22	30															230	345	100	1000	690	1245	200														
CA-100-80/15A	11	15															100	80	153	250	373	490	7	-	380	440	470	-	-	18	230	345	100	1000	690	1245	200
	18,5	25																													275	345	100	1100	700	1245	230
CA-100-80/20A	15	20																													230	345	100	1000	690	1245	220
	22	30																													275	345	100	1100	700	1295	255
CA-100-80/30A	30	40	310	433	550	-	10	-	-	380	420	20	325	345	100	1200															700	1365	340				
	22	30	250	373	490	7	-	380	440	470	-	-	18	275	345	100															1100	700	1295	255			
CA-100-80/40A	37	50	310	433	550	-	10	-	-	380	420	20	325	345	100	1200															700	1365	365				
	30	40	335	458	575	-	10	-	-	440	480	20	325	345	100	1200															700	1435	400				
CA-100-80/50A	45	60	310	433	550	-	10	-	-	380	420	20	325	345	100	1200															700	1365	365				
	37	50	360	483	600	-	10	-	-	440	480	20	325	345	100	1300															800	1540	500				
55	75																																				

1450/1750 R.P.M.

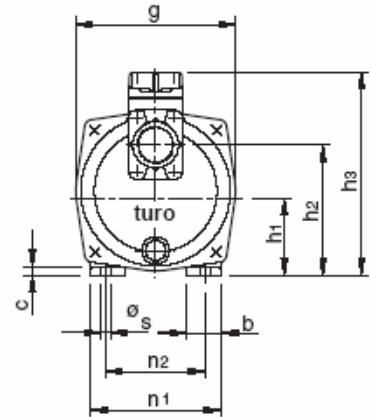
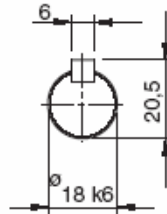
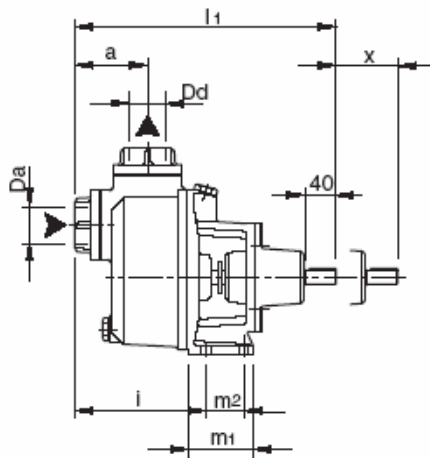
Type	Motor		DNa	DNd	a	h ₁	h ₂	h ₃	h ₄	h ₅	b ₁	b ₂	b ₃	b ₄	b ₅	s	i	g	x	l ₁	l ₂	l ₃	kg																																																																																																									
	KW	HP																																																																																																																														
CA-50/5A	0,55	0,75	65	50	105	220	300	400	7	-	270	320	350	-	-	18	145	290	75	700	490	805	95																																																																																																									
	0,75	1																																																																																																																														
CA-50/7A	0,75	1																						65	65	120	250	360	460	7	-	380	440	470	-	-	18	192	345	100	800	500	930	145																																																																																				
	1,1	1,5																																																																																																																														
CA-65/20A	2,2	3																																											80	80	135	250	345	455	7	-	310	360	390	-	-	18	210	325	75	800	500	940	140																																																															
	3	4																																																																																																																														
CA-65/25A	3	4																																																																100	80	153	250	373	490	7	-	380	440	470	-	-	18	225	345	100	900	600	970	150																																										
	4	5,5																																																																																																																														
CA-65/30A	3	4																																																																																					150	150	170	335	510	700	-	10	-	-	-	440	480	20	325	490	100	1200	700	1380	420																					
	4	5,5																																																																																																																														
CA-80/7A	1,5	2																																																																																																										150	150	170	335	510	700	-	10	-	-	-	440	480	20	325	490	100	1200	700	1380	420
	2,2	3																																																																																																																														
CA-80/10A	2,2	3	150	150	170	335	510	700	-	10	-	-	-	440	480	20	325	490	100	1200	700	1380	420																																																																																																									
	3	4																																																																																																																														
CA-80/15A	2,2	3																						150	150	170	335	510	700	-	10	-	-	-	440	480	20	325	490	100	1200	700	1380	420																																																																																				
	3	4																																																																																																																														
CA-80/20A	3	4																																											150	150	170	335	510	700	-	10	-	-	-	440	480	20	325	490	100	1200	700	1380	420																																																															
	4	5,5																																																																																																																														
CA-100-80/15A	2,2	3																																																																150	150	170	335	510	700	-	10	-	-	-	440	480	20	325	490	100	1200	700	1380	420																																										
	3	4																																																																																																																														
CA-100-80/20A	2,2	3																																																																																					150	150	170	335	510	700	-	10	-	-	-	440	480	20	325	490	100	1200	700	1380	420																					
	3	4																																																																																																																														
CA-100-80/30A	3	4																																																																																																										150	150	170	335	510	700	-	10	-	-	-	440	480	20	325	490	100	1200	700	1380	420
	4	5,5																																																																																																																														
CA-100-80/40A	3	4	150	150	170	335	510	700	-	10	-	-	-	440	480	20	325	490	100	1200	700	1380	420																																																																																																									
	5,5	7,5																																																																																																																														
CA-100-80/50A	5,5	7,5																						150	150	170	335	510	700	-	10	-	-	-	440	480	20	325	490	100	1200	700	1380	420																																																																																				
	7,5	10																																																																																																																														
CA-150/10A	7,5	10																																											150	150	170	335	510	700	-	10	-	-	-	440	480	20	325	490	100	1200	700	1380	420																																																															
	11	15																																																																																																																														
CA-150/15A	15	20																																																																150	150	170	335	510	700	-	10	-	-	-	440	480	20	325	490	100	1200	700	1380	420																																										
	11	15																																																																																																																														
CA-150/20A	15	20																																																																																					150	150	170	335	510	700	-	10	-	-	-	440	480	20	325	490	100	1200	700	1380	420																					
	18,5	25																																																																																																																														
CA-150/25A	15	20																																																																																																										150	150	170	335	510	700	-	10	-	-	-	440	480	20	325	490	100	1200	700	1380	420
	22	30																																																																																																																														
CA-150/30A	30	40	150	150	170	335	510	700	-	10	-	-	-	440	480	20	325	490	100	1200	700	1380	420																																																																																																									
	18,5	25																																																																																																																														
CA-150/40A	15	20																						150	150	170	335	510	700	-	10	-	-	-	440	480	20	325	490	100	1200	700	1380	420																																																																																				
	30	40																																																																																																																														
CA-150/50A	30	40																																											150	150	170	335	510	700	-	10	-	-	-	440	480	20	325	490	100	1200	700	1380	420																																																															
	18,5	25																																																																																																																														
CA-150/60A	18,5	25																																																																150	150	170	335	510	700	-	10	-	-	-	440	480	20	325	490	100	1200	700	1380	420																																										
	30	40																																																																																																																														

Subject to alterations

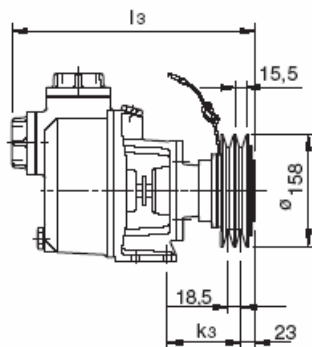
DIMENSIONS

SERIE CA

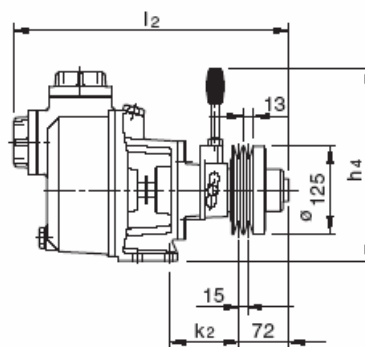
BARE SHAFT AND CLUTCH



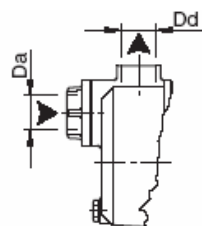
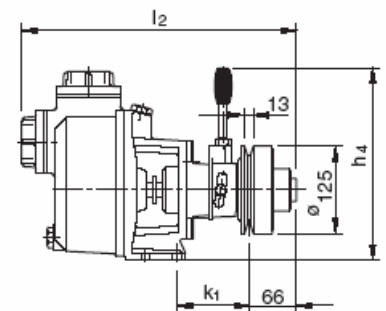
2 A type belts, with magnetic clutch



2 A type belts, with mechanic clutch



1 A type belt, with mechanic clutch



Note: Types CA-40 and CA-40 have inlet and outlet counterflanges.
Type CA-32 has inlet counterflange only.

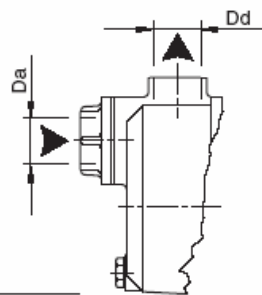
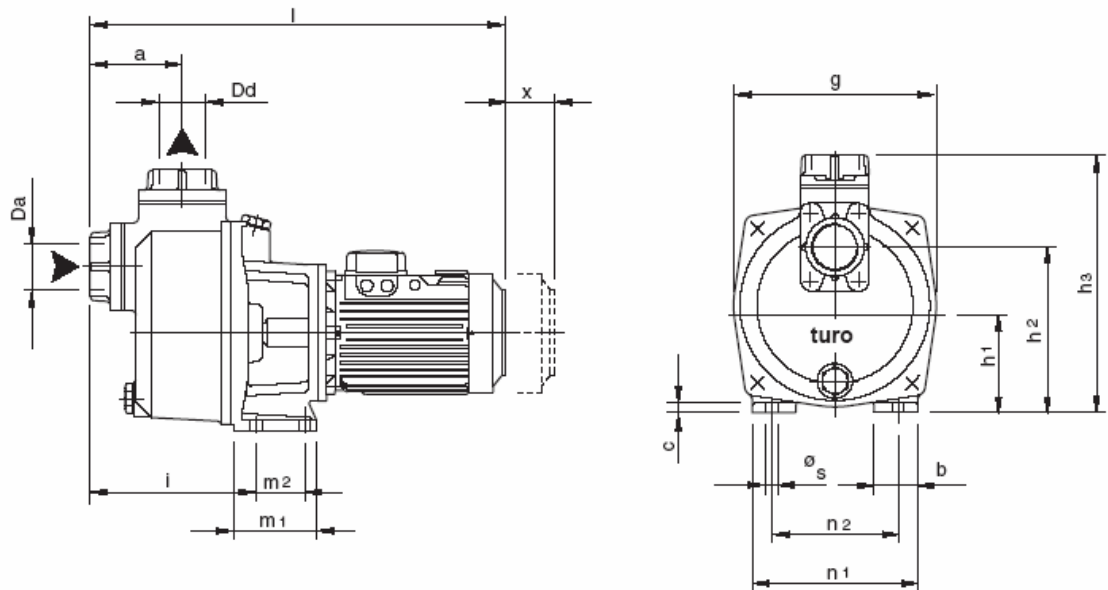
Type CA-32/0.5

Type	Da	Dd	a	i	h ₁	h ₂	h ₃	h ₄	g	b	c	s	m ₁	m ₂	n ₁	n ₂	x	l ₁	l ₂	l ₃	k ₁	k ₂	k ₃	kg
CA-32/0,5	1 1/4"G	1 1/4"G	90	150	90	150	207	275	178	40	9	10	60	30	140	100	50	300	352	305	104	96	102	18
CA-40/1A	1 1/2"G	1 1/2"G	95	175	100	168	265	285	208	45	10	12	85	45	170	130	50	340	392	345	106	98	102	26
CA-50/2A	2"G	2"G	88	174	112	190	280	297	238	45	10	12	85	45	200	160	50	350	402	355	106	98	104	34
CA-50/3A		36																						

Subject to alterations

Ref. 830-CA3205-076

DIMENSIONS
SERIE CA
MONOBLOC EXECUTION



Note:

Types CA-40 and CA-40 have inlet and outlet counterflanges.
Type CA-32 has inlet counterflange only.

Type CA-32/0.5

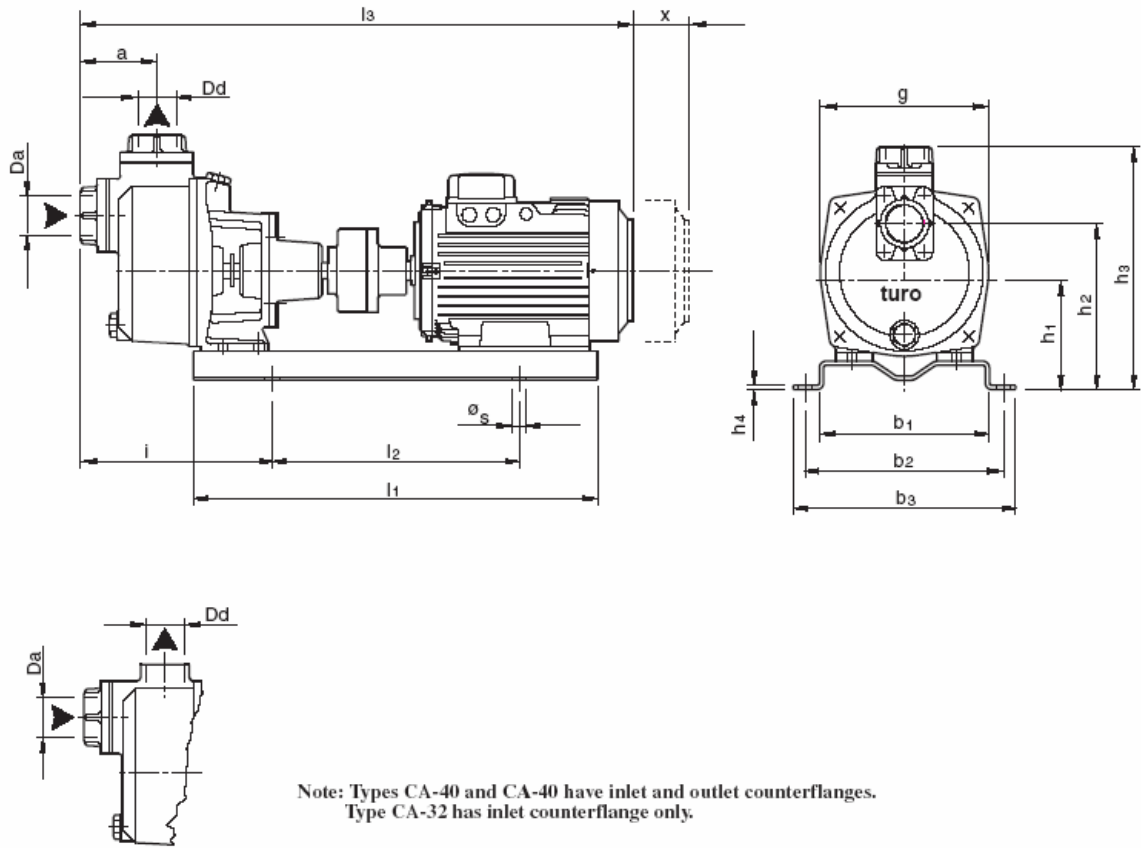
2900 / 3500 R.P.M.

Type	Motor			Da	Dd	a	i	h ₁	h ₂	h ₃	g	b	c	s	m ₁	m ₂	n ₁	n	x	l	kg
	KW	HP	Type																		
CA-32/0,5	0,37	0,5	71-a	1 1/4" G	1 1/4" G	90	150	90	150	207	178	40	9	10	60	30	140	100	50	400	18
	0,75	1	80-a																	430	20
	1,1	1,5	80-b																		
CA-40/1A	0,75	1	80-a	1 1/2" G	1 1/2" G	95	175	100	168	265	208	45	10	12	85	45	170	130	50	465	26
	1,1	1,5	80-b																	500	30
	1,5	2	90-S																		
CA-50/2A	1,5	2	90-S	2" G	2" G	88	174	112	190	280	238	45	10	12	85	45	200	160	50	510	34
	2,2	3	90-L																	510	36
	3	4	100-L																	550	41
CA-50/3A	2,2	3	90-L	2" G	2" G	88	174	112	190	280	238	45	10	12	85	45	200	160	50	510	36
	3	4	100-L																	550	41
	4	5,5	112-M																		

Subject to alterations

Ref. 829-CA3205-077

DIMENSIONS
SERIE CA
BASE SUPPORT EXECUTION



Type CA-32/0.5

2900 / 3500 R.P.M.

Type	Motor			Da	Dd	a	i	h1	h2	h3	h4	b1	b2	b3	s	g	x	l1	l2	l	kg
	KW	HP	Type																		
CA-32/0,5	0,37	0,5	71-a	1¼"G	1¼"G	90	205	125	185	242	4	210	245	275	18	178	50	500	305	580	34
	0,75	1	80-a																	610	38
	1,1	1,5	80-b																		
CA-40/1A	0,75	1	80-a	1½"G	1½"G	95	220	135	203	300	4	210	245	275	18	208	50	500	305	640	46
	1,1	1,5	80-b																		
	1,5	2	90-S																		685
CA-50/2A	1,5	2	90-S	2"G	2"G	88	240	147	225	315	4	210	245	275	18	238	50	500	305	685	58
	2,2	3	90-L																		62
	3	4	100-L																		725
CA-50/3A	2,2	3	90-L	2"G	2"G	88	240	147	225	315	4	210	245	275	18	238	50	500	305	685	62
	3	4	100-L																		68
	4	5,5	112-M																		725

Subject to alterations

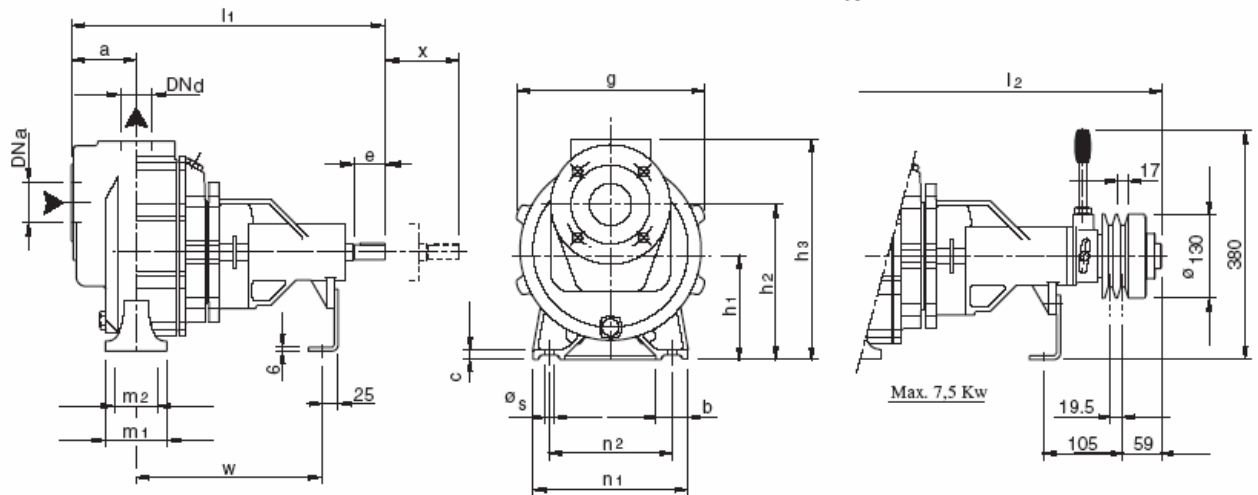
Ref. 828-CA3205-078

DIMENSIONS

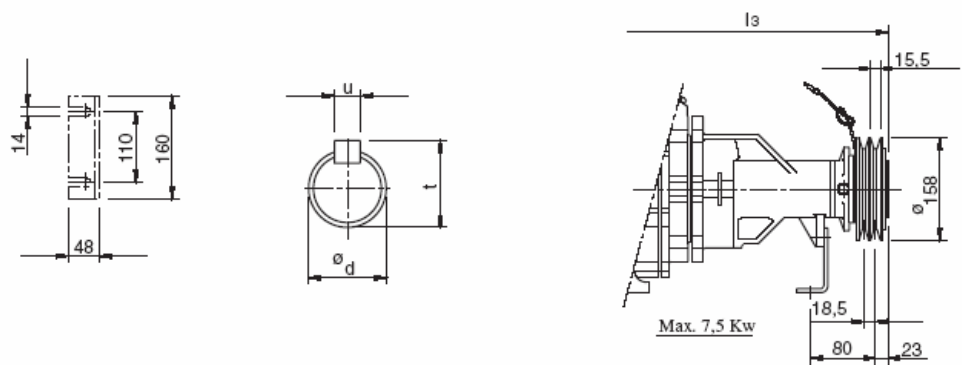
SERIE CA

BARE SHAFT AND CLUTCH

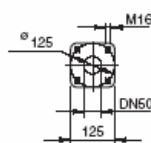
2 B type belts, with mechanic clutch



2 A type belts, with magnetic clutch



Discharge CA-50



		DIN 2501, PN16				
DNa	DNd	65	80	100	125	150
d 4	122	138	158	188	212	
K ϕ	145	160	180	210	240	
D ϕ	185	200	220	250	285	
N *	4	8	8	8	8	
d 2	M16	M16	M16	M16	M20	

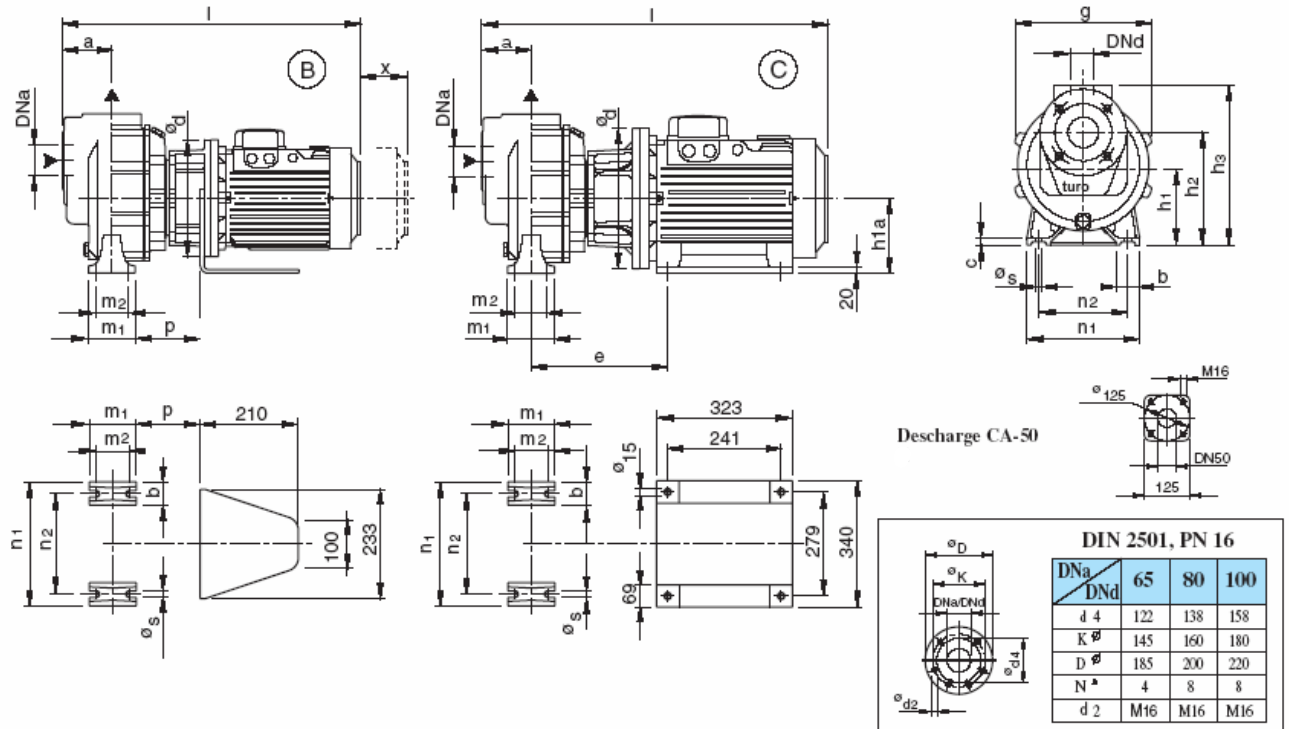
Type	DNa	DNd	a	h ₁	h ₂	h ₃	g	b	c	s	m ₁	m ₂	n ₁	n ₂	w	d	e	t	u	x	l ₁	l ₂	l ₃	kg
CA-50/..A	65	50	105	160	240	340	290	50	15	14	100	70	240	190	305	24	50	26,9	8	75	510	580	520	52
CA-65/..A	65	65	120	190	300	400	345	65	18	14	125	95	320	250	319	24	50	26,9	8	100	539	609	549	80
CA-80/..A	80	80	135	190	285	395	325	65	18	14	125	95	280	212	313	24	50	26,9	8	75	548	618	558	70
CA-100-80/..A	100	80	153	190	313	430	345	65	18	14	125	95	320	250	329	24	50	26,9	8	100	582	-	-	80
CA-150/..A	150	150	170	225	400	590	490	80	20	24	160	120	435	355	392	42	115	45,1	12	100	722	-	-	190

Subject to alterations

Ref. CA-996

DIMENSIONS
SERIE CA
MONOBLOC EXECUTION

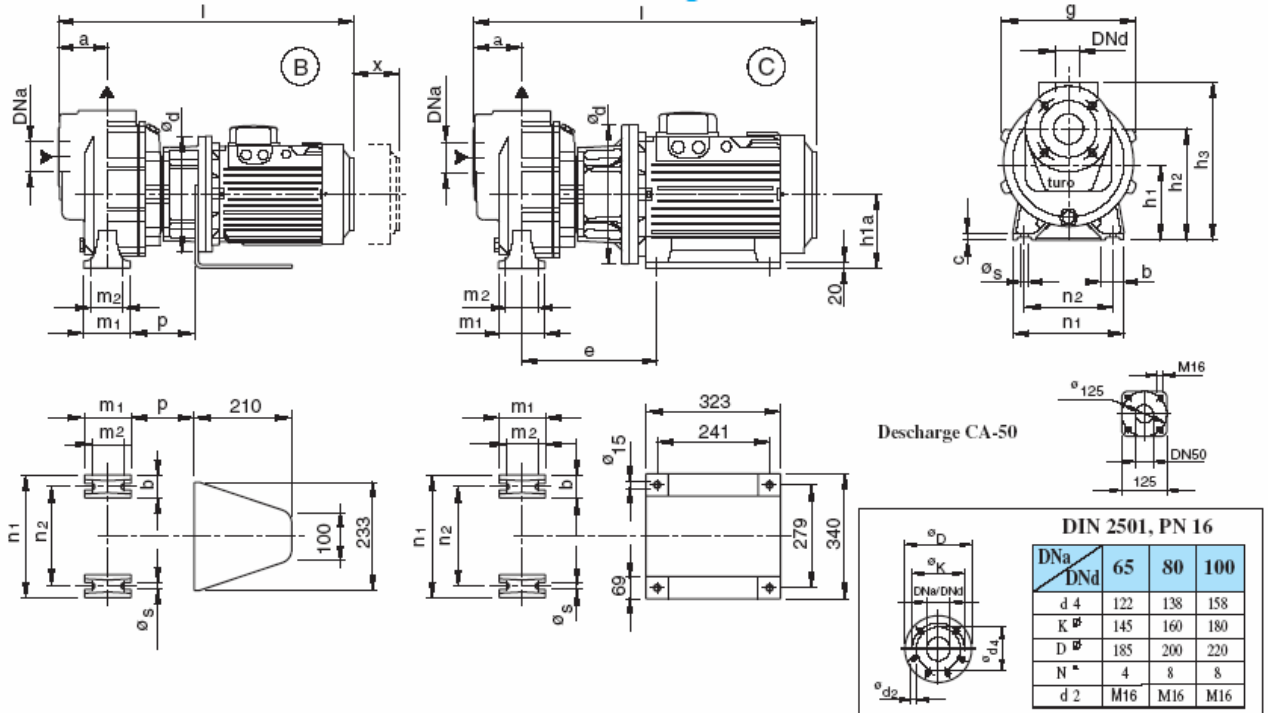
2900 / 3500 R.P.M.



Type	Motor		DNa	DNd	a	e	h1	h2	h3	h1a	g	b	c	s	m1	m2	p	n1	n2	x	d	l	kg	
	KW	HP																						Form
CA-50/5A	4	5,5	65	50	105	-	160	240	340	-	290	50	18	14	100	70	135	240	190	75	250	625	80	
	7,5	10																						B
CA-50/7A	5,5	7,5	65	50	105	-	190	270	370	-	290	100	18	14	100	70	150	340	290	75	350	895	130	
	11	15																						B
CA65/15A	11	15	65	65	120	-	190	300	400	-	345	65	18	14	125	95	150	320	250	100	350	920	160	
	18,5	25																						B
CA-65/20A	15	20	65	65	120	392	190	300	400	180	345	65	18	14	125	95	-	320	250	100	350	970	210	
	22	30																						C
CA-65/25A	18,5	25	B	65	65	120	392	190	300	400	180	345	65	18	14	125	95	150	320	250	100	350	920	180
CA-65/30A	22	30	C	65	65	120	392	190	300	400	180	345	65	18	14	125	95	150	320	250	100	350	920	180
CA-80/7A	5,5	7,5	80	80	135	-	190	285	395	-	325	65	18	14	125	95	145	280	212	75	300	755	115	
	11	15																						B
CA-80/10A	7,5	10	80	80	135	-	190	285	395	-	325	65	18	14	125	95	145	280	212	75	300	755	120	
	15	20																						B
CA-80/15A	11	15	80	80	135	-	190	285	395	-	325	65	18	14	125	95	145	280	212	75	350	930	165	
	18,5	25																						B
CA-80/20A	15	20	80	80	135	-	190	285	395	-	325	65	18	14	125	95	145	280	212	75	350	930	165	
	22	30																						C
CA-100-80/15A	11	15	100	80	153	-	190	313	430	-	345	65	18	14	125	95	160	320	250	100	350	965	160	
	18,5	25																						B
CA-100-80/20A	15	20	100	80	153	-	190	313	430	-	345	65	18	14	125	95	160	320	250	100	350	965	170	
	22	30																						C
CA-100-80/30A	22	30	C	100	80	153	402	190	313	430	180	345	65	18	14	125	95	160	320	250	100	350	1015	210

Subject to alterations

Ref. CA-997/1

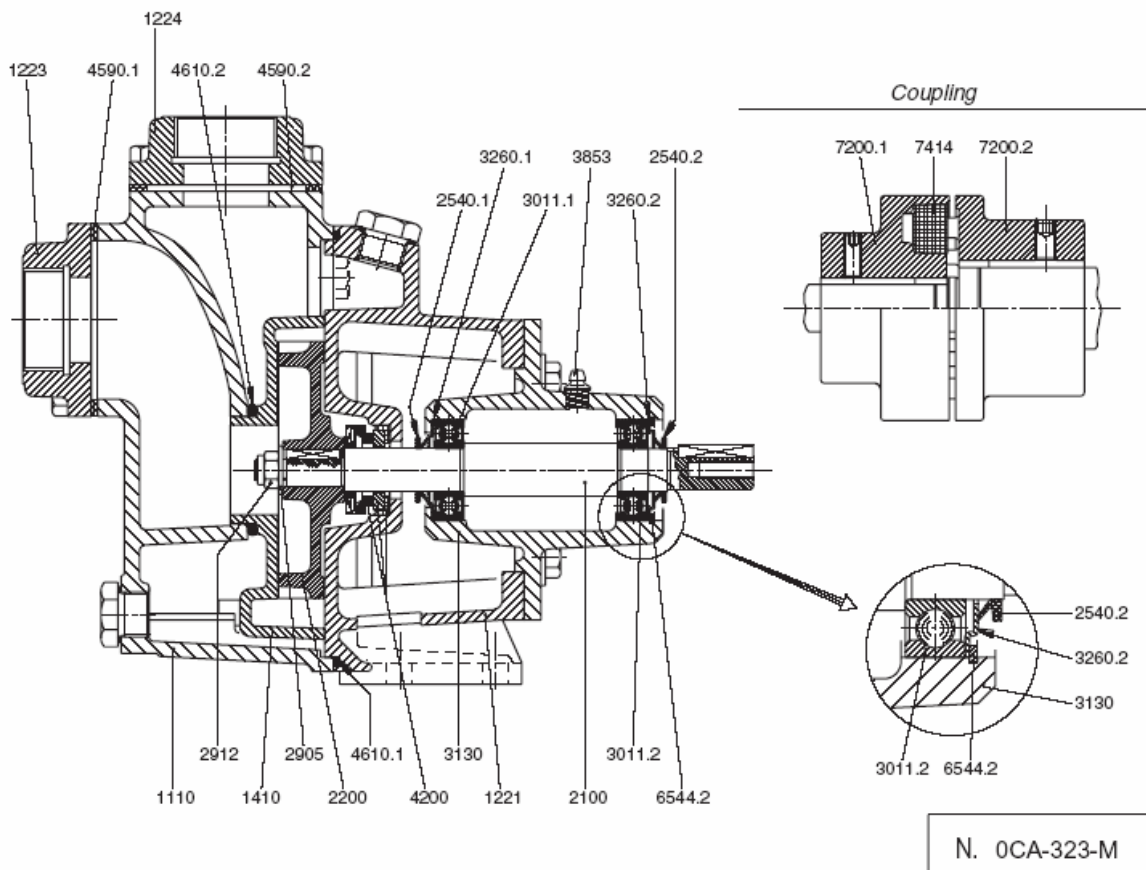
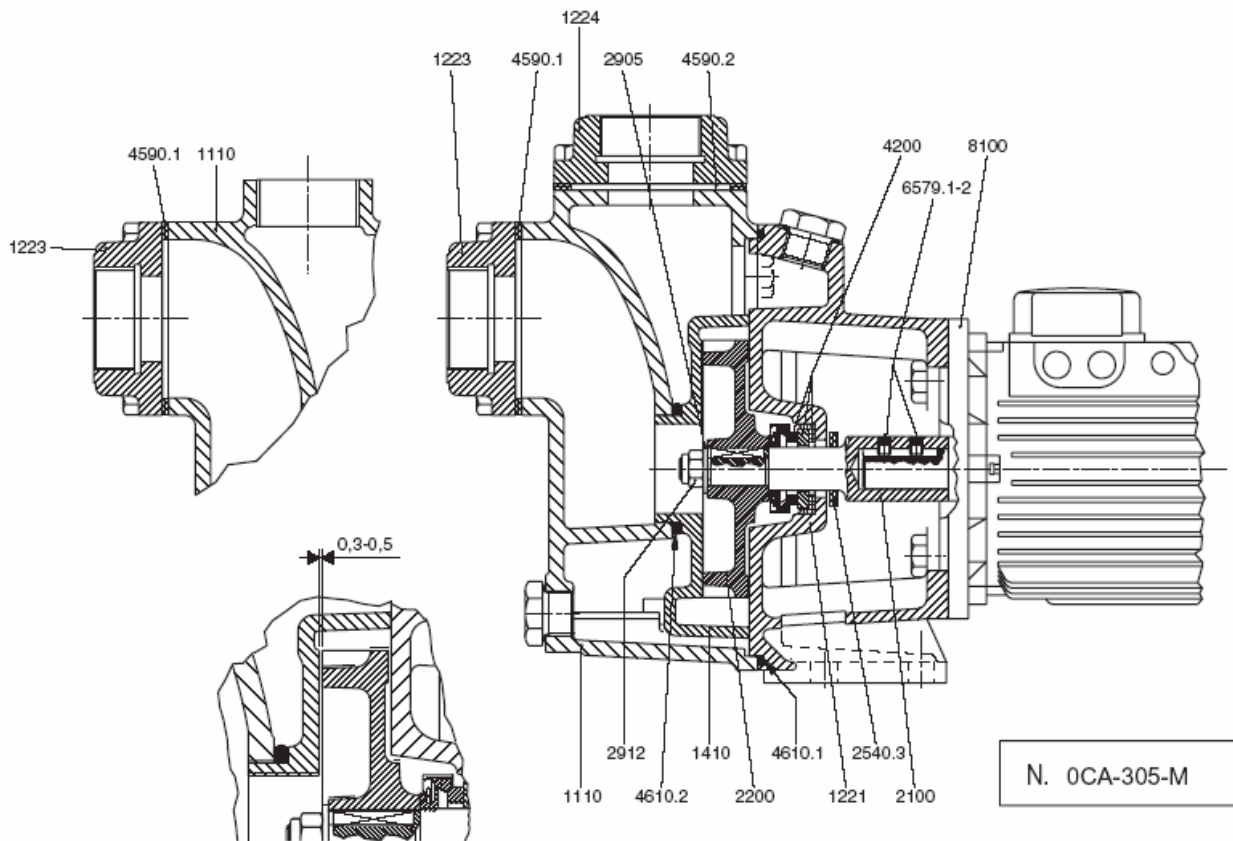
MONOBLOC EXECUTION
1450 / 1750 R.P.M.


Type	Motor		DNa	DNd	a	e	h ₁	h ₂	h ₃	h _{1a}	g	b	c	s	m ₁	m ₂	p	n ₁	n ₂	x	d	l	kg	
	KW	HP																						Form
CA-50/5A	0,55	0,75	B	65	50	105	-	160	240	340	-	290	50	18	14	100	70	-	240	190	75	200	540	65
	0,75	1																						
CA-50/7A	0,75	1	B	65	50	105	-	160	240	340	-	290	50	18	14	100	70	-	240	190	75	200	540	65
	1,1	1,5																						
CA-65/20A	2,2	3	B	65	65	120	-	190	300	400	-	345	65	18	14	125	95	135	320	250	100	250	655	110
	3	4																						
CA-65/25A	3	4	B	65	65	120	-	190	300	400	-	345	65	18	14	125	95	135	320	250	100	250	655	110
	4	5,5																						
CA-65/30A	3	4	B	65	65	120	-	190	300	400	-	345	65	18	14	125	95	135	320	250	100	250	655	110
	4	5,5																						
CA-80/7A	1,5	2	B	80	80	135	-	190	285	395	-	325	65	18	14	125	95	-	280	212	75	200	610	95
	2,2	3																						
CA-80/10A	2,2	3	B	80	80	135	-	190	285	395	-	325	65	18	14	125	95	-	280	212	75	200	610	95
	3	4																						
CA-80/15A	2,2	3	B	80	80	135	-	190	285	395	-	325	65	18	14	125	95	-	280	212	75	200	610	95
	3	4																						
CA-80/20A	3	4	B	80	80	135	-	190	285	395	-	325	65	18	14	125	95	-	280	212	75	200	610	95
	4	5,5																						
CA-100-80/15A	2,2	3	B	100	80	153	-	190	313	430	-	345	65	18	14	125	95	-	320	250	100	250	695	110
	3	4																						
CA-100-80/20A	2,2	3	B	100	80	153	-	190	313	430	-	345	65	18	14	125	95	-	320	250	100	250	695	110
	3	4																						
CA-100-80/30A	3	4	B	100	80	153	-	190	313	430	-	345	65	18	14	125	95	-	320	250	100	250	695	110
	4	5,5																						
CA-100-80/40A	3	4	B	100	80	153	-	190	313	430	-	345	65	18	14	125	95	-	320	250	100	250	695	110
	5,5	7,5																						
CA-100-80/50A	5,5	7,5	B	100	80	153	-	190	313	430	-	345	65	18	14	125	95	-	320	250	100	300	790	130
	7,5	10																						

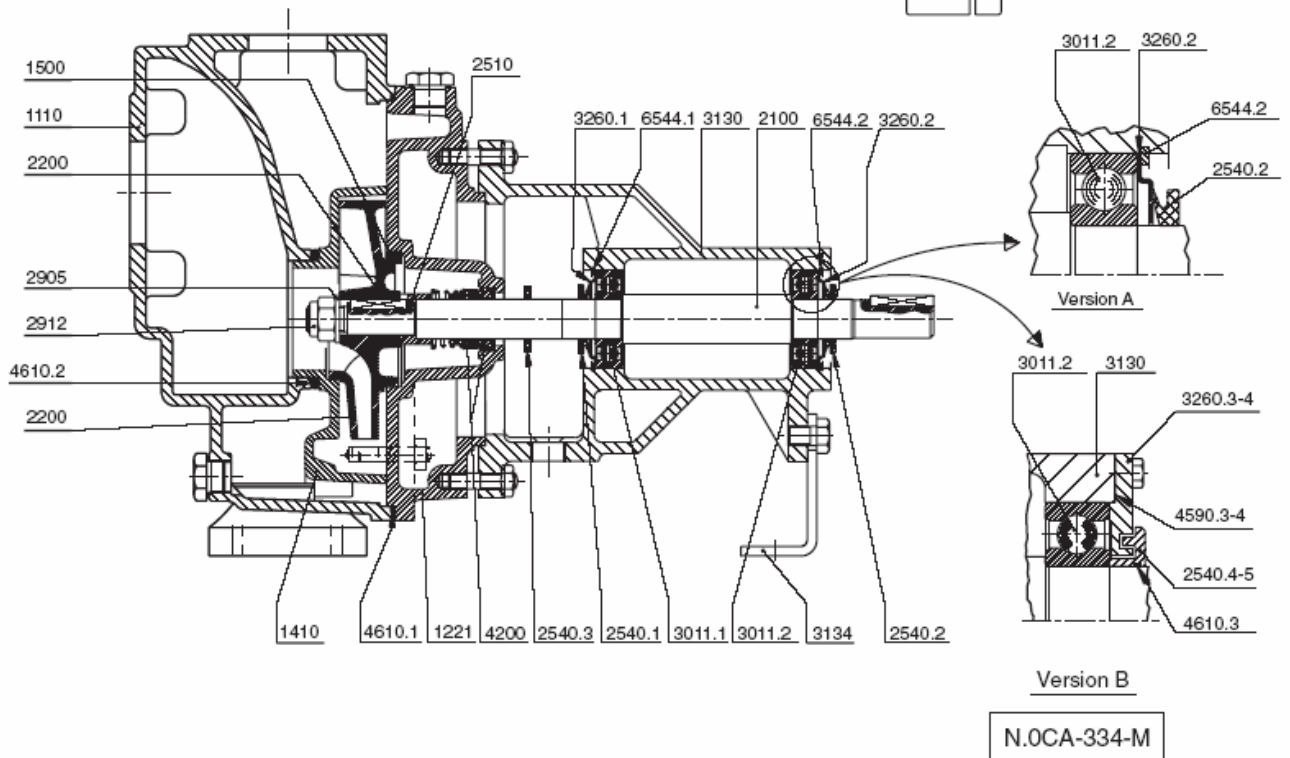
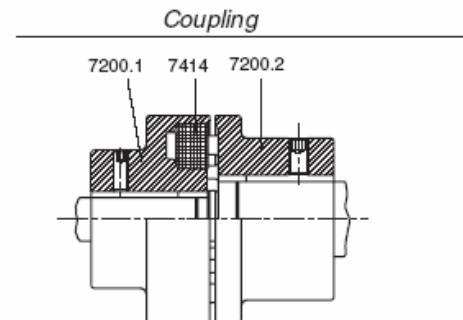
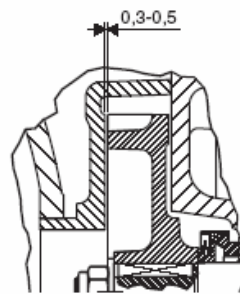
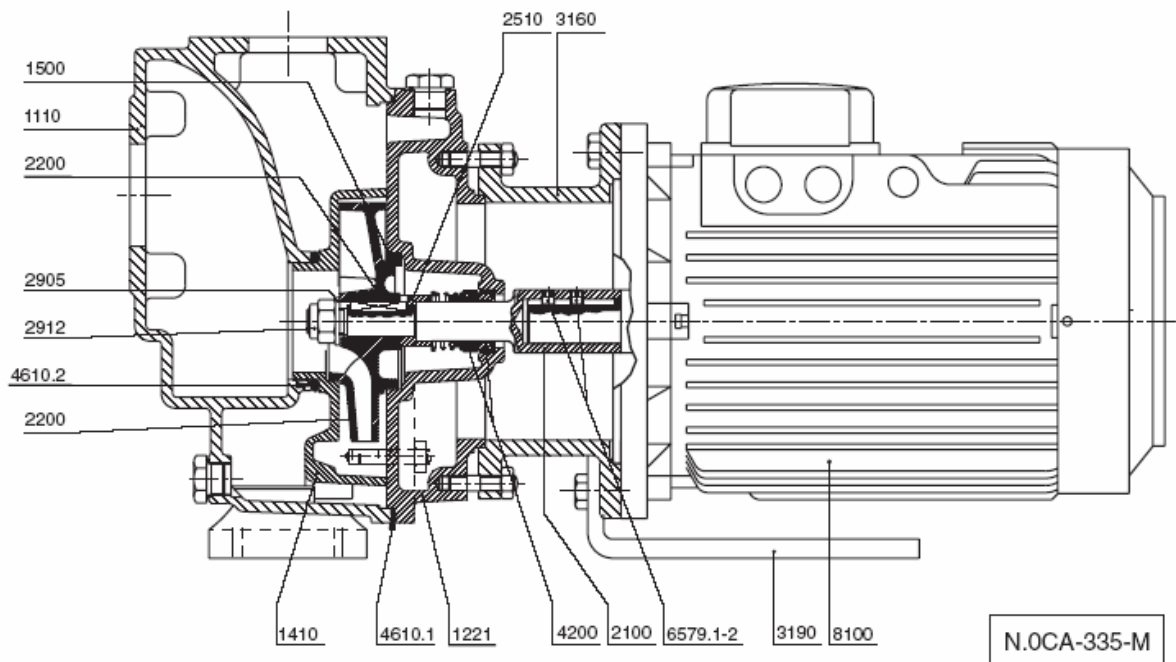
Subject to alterations

Ref. CA-997/2

SECTIONAL DRAWING TYPE CA-32, CA40, CA50/2A-3A



TYPES CA-50/5-7A, CA-65/..A, CA-80/..A, CA-100-80/..A, CA-150/..A



DESCRIPTION	Ref.
Pump casing	1110
Casing cover	1221
Suction cover	1223
Discharge cover	1224
Diffuser	1410
Casing wear ring	1500
Shaft	2100
Impeller	2200
Spacer ring	2510
Thrower	2540.1-2
Thrower	2540.3
Thrower	2540.4-5
Washer	2905
Impeller nut	2912
Radial ball bearing	3011.1-2
Bearing bracket	3130
Support foot	3134
Motor stool	3160
Foot	3190
Bearing cover	3260.1-2
Bearing cover	3260.3-4
Grease nipple	3853
Mechanical seal	4200
Gasket	4590.1
Gasket	4590.2
Gasket	4590.3-4
O-ring	4610.1
O-ring	4610.2
O-ring	4610.3
Circlip	6544.1-2
Socket head cap screw	6579.1-2
Coupling half	7200.1
Coupling half	7200.2
Coupling bush	7414
Motor	8100

Version	TYPES
Version A	CA-50 / 5-7, CA-65, CA-80, CA-100-80
Version B	CA-150

INTERCHANGEABILITY

Description	Casing	Impeller	Shaft	Diffuser	Bearing bracket	Ball bearings	Mechanical seal	Casing cover	Cover o ring	Diffuser o ring	Impeller nut	
Reference	1110	2200	2100	1410	3130	3011.1-2	4200	1221	4610.1	4610.2	2912	
PUMP TYPE	CA-32/0,5	1	1 - O	1	1	1	1	1	1	2	1	
	CA-40/1A	2	2 - O	2	2	2	1	2	2	3	4	1
	CA-50/2A	3	3 - O	2	3	2	1	2	3	5	6	1
	CA-50/3A	3	4 - O	2	4	2	1	2	3	5	6	1
	CA-50/5A	4	5 - O	3	5	3	2	3	4	7	8	2
	CA-50/7A	4	6 - O	3	6	3	2	3	4	7	8	2
	CA-65/20A	5	7 - C	3	7	3	2	3	5	9	10	2
	CA-65/25A	5	8 - C	3	8	3	2	3	5	9	10	2
	CA-65/30A	5	9 - C	3	9	3	2	3	5	9	10	2
	CA-80/7A	6	10 - O	3	10	3	2	3	6	11	12	2
	CA-80/10A	6	11 - C	3	11	3	2	3	6	11	12	2
	CA-80/15A	6	12 - C	3	12	3	2	3	6	11	12	2
	CA-80/20A	6	13 - C	3	13	3	2	3	6	11	12	2
	CA-100-80/15A	7	14 - O	3	14	3	2	3	5	9	13	2
	CA-100-80/20A	7	15 - O	3	14	3	2	3	5	9	13	2
	CA-100-80/30A	7	16 - C	3	15	3	2	3	5	9	13	2
	CA-100-80/40A	7	17 - C	3	16	3	2	3	5	9	13	2
	CA-100-80/50A	7	18 - C	3	17	3	2	3	5	9	13	2
CA-150/10A	8	19 - O	4	18	4	3	4	7	14	15	3	
CA-150/15A	8	20 - O	4	19	4	3	4	7	14	15	3	
CA-150/20A	8	21 - O	4	20	4	3	4	7	14	15	3	
CA-150/25A	8	22 - O	4	21	4	3	4	7	14	15	3	

O = Open • C = Closed



Engineered solutions for all your pumping needs

Turoteknikk AS

**-Hildertunet 2
1341 Slependen, Norway
-Phone +47 67 80 63 00
-Fax +47 67 80 63 10
-mail@turoteknikk.no
-www.turoteknikk.com**