

Basic Pedestal

Standard Centrifugal Pump

Model 6504E60-B

Size 6" x 4"



PUMP SPECIFICATIONS

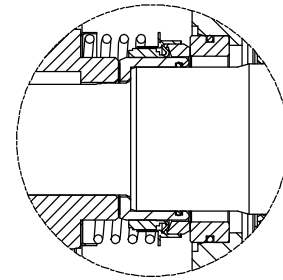
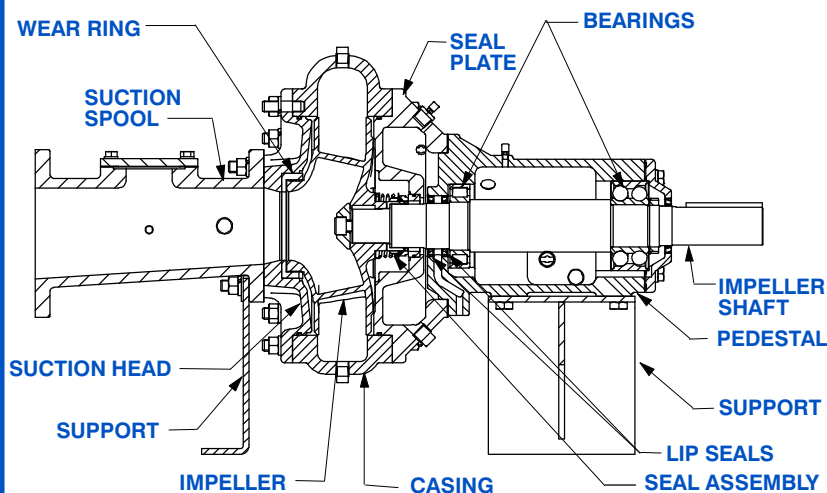
Size: 6" x 4" (152 mm x 102 mm) Flanged.**Casing:** Ductile Iron 65-45-12.

Maximum Casing Pressure 285 psi (1965 kPa).*

Maximum Operating Pressure 250 psi (1723 kPa) at Temperatures up to 100 °F (37 °C) Based on System Component Limitations.*

Enclosed Type, Two Vane Impeller: Ductile Iron 65-45-12.

Handles 3" (76,2 mm) Diameter Spherical Solids.

Suction Head: Gray Iron 30.**Suction Spool:** Gray Iron 30.**Impeller Shaft:** Alloy Steel 4150.**Replaceable Wear Ring:** Ductile Iron 65-45-12.**Pedestal:** Gray Iron 30.**Seal Plate:** Gray Iron 30.**Shaft Sleeve:** Stainless Steel 303/304.**Radial Bearing:** Open Roller.**Thrust Bearing:** Open Double Ball.**Bearing and Seal Cavity Lubrication:** SAE 30 Non-Detergent Oil.**Gaskets:** Vegetable Fiber, Red Rubber and Buna-N.**O-Rings:** Buna-N.**Hardware:** Standard Plated Steel.**Bearing and Seal Cavity Oil Level Sight Gauges.****Consult Factory for Applications Exceeding Maximum Pressure and/or Temperature Indicated.*

SEAL DETAIL

Mechanical, Oil-Lubricated. Silicon Carbide Rotating Face and Stationary Seat. Fluorocarbon Elastomers (DuPont Viton® or Equivalent). Stainless Steel 316 Cage and Stainless Steel 18-8 Spring. Maximum Temperature of Liquid Pumped 160 °F (71 °C).*



GORMAN-RUPP PUMPS

www.grpumps.com

Specifications Subject to Change Without Notice



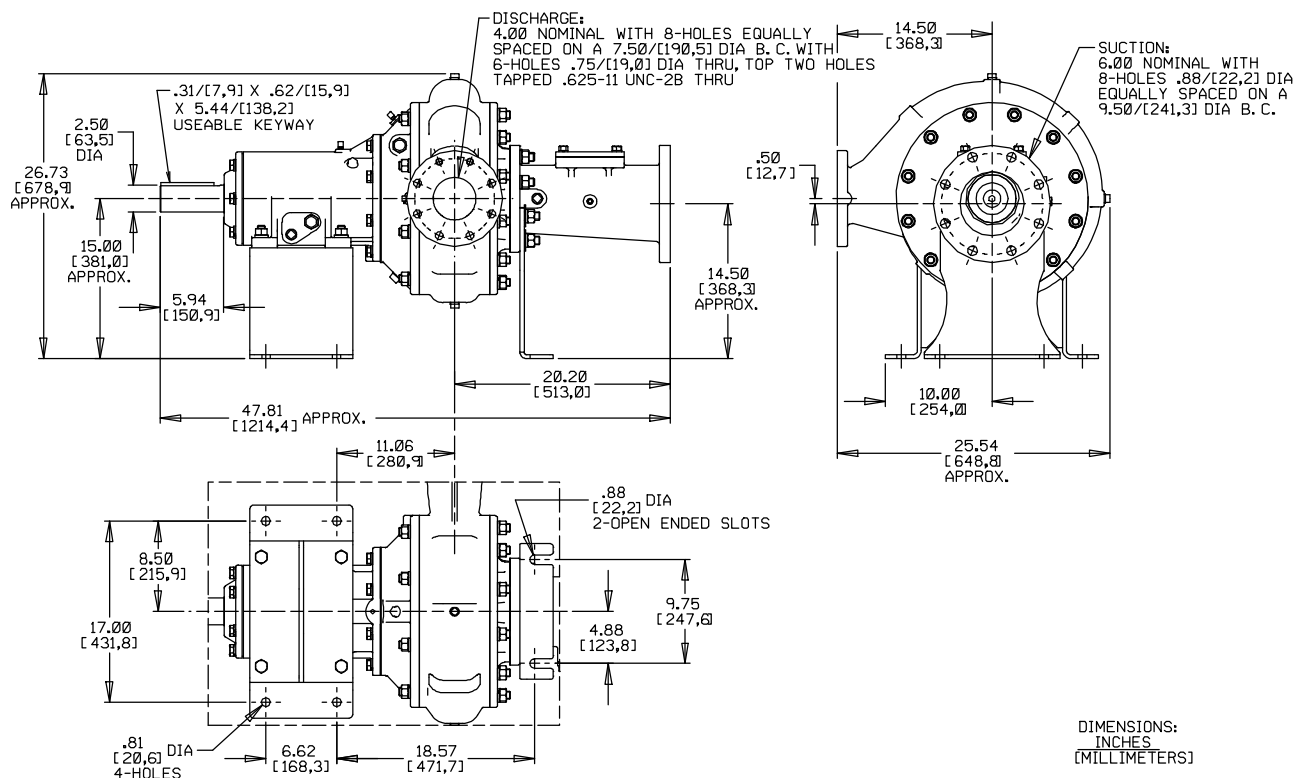
Turoteknikk Drift AS, Hildertunet 2, N-1341 Slependsen, Norway
+47 67806300—mail@turoteknikk.no—www.turoteknikk.no

SECTION 65, PAGE 220

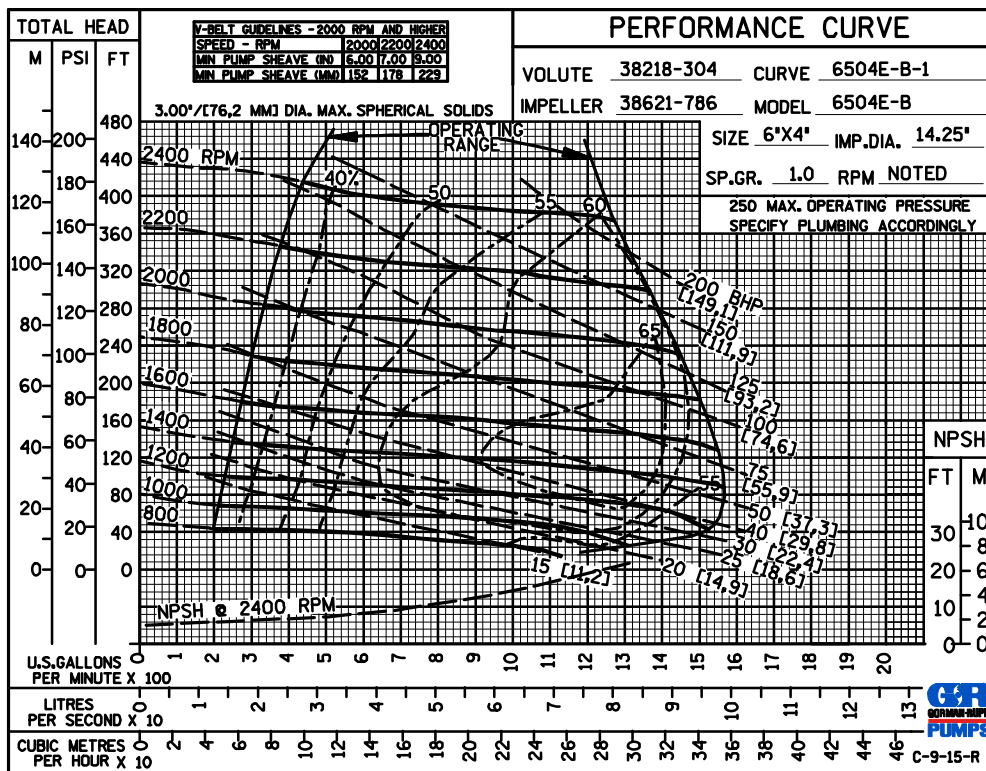
APPROXIMATE DIMENSIONS and WEIGHTS

NET WEIGHT:
SHIPPING WEIGHT:
EXPORT CRATE:

715 LBS. (324,3 KG.)
815 LBS. (369,7 KG.)
32.2 CU. FT. (0,9 CU. M.)



**MULTI-SPEED
CURVE
PERFORMANCE
BASED ON
WATER**



GORMAN-RUPP PUMPS

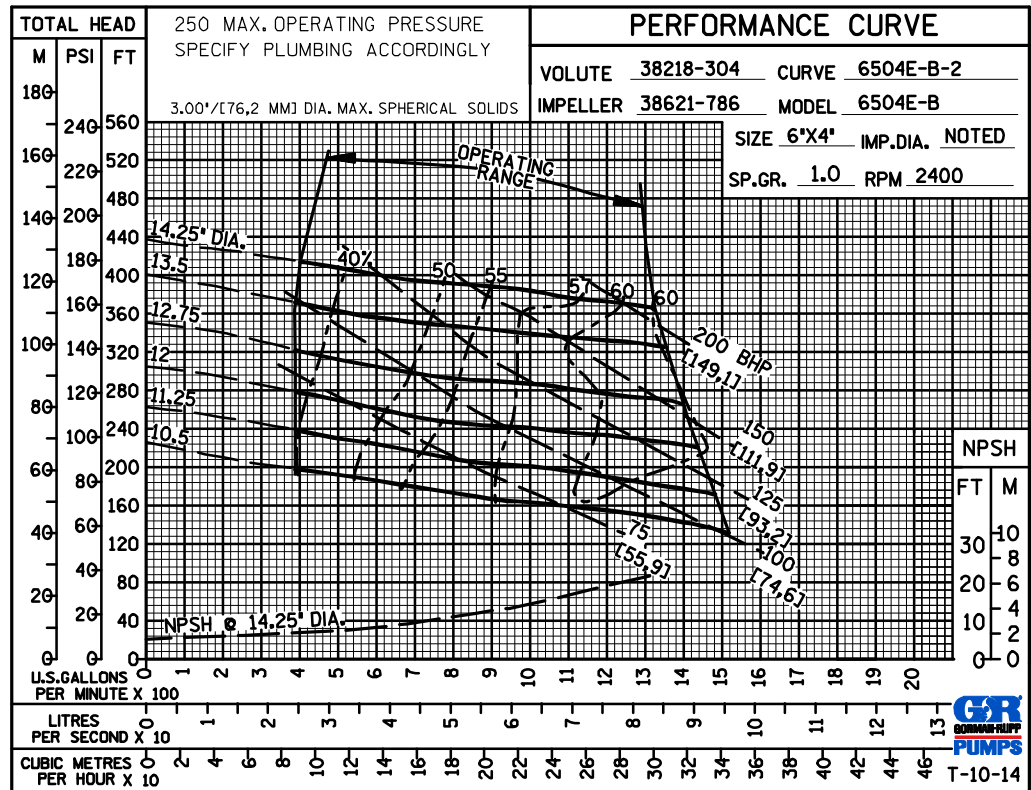
www.grpumps.com

Specifications Subject to Change Without Notice

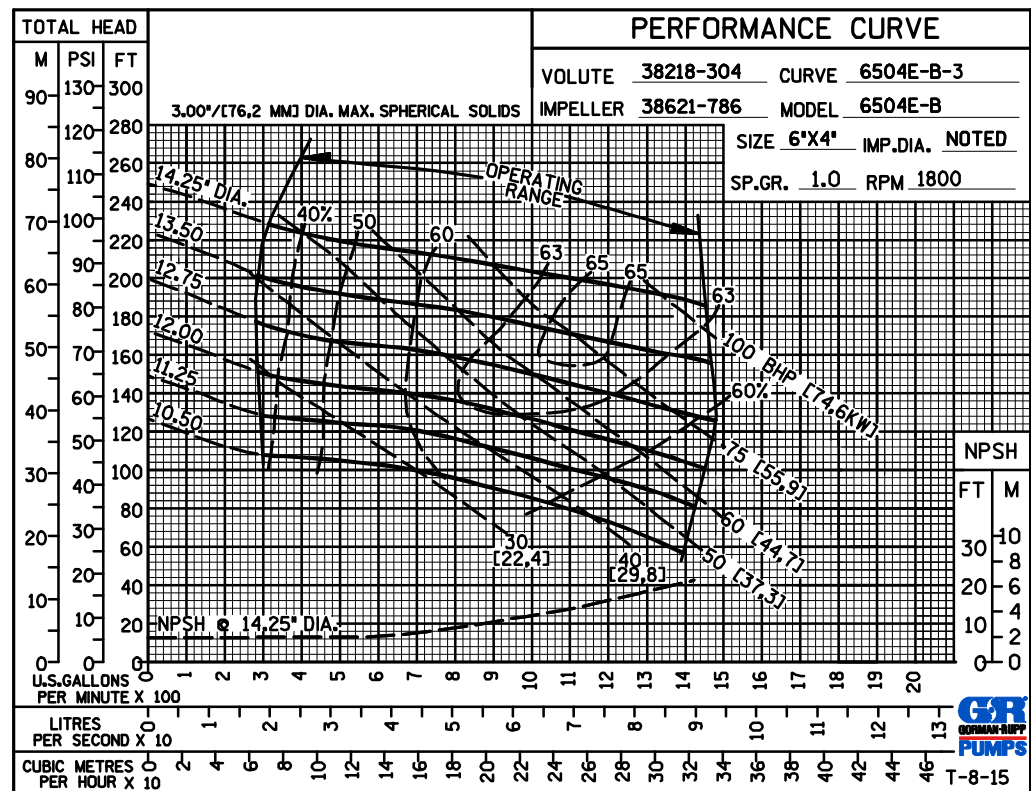


Turoteknikk Drift AS, Hildertunet 2, N-1341 Slependen, Norway
+47 67806300—mail@turoteknikk.no—www.turoteknikk.no

60 HERTZ
PERFORMANCE
BASED ON
WATER
TRIMMED
IMPELLER



60 HERTZ
PERFORMANCE
BASED ON
WATER
TRIMMED
IMPELLER



GORMAN-RUPP PUMPS

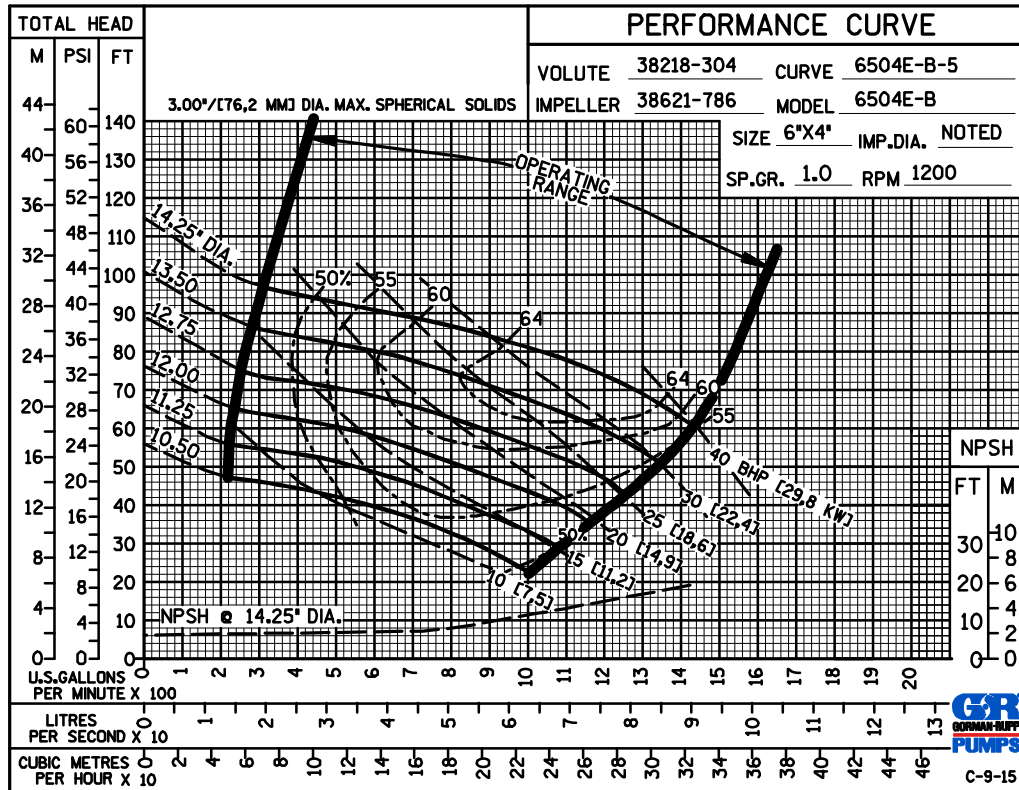
www.grpumps.com

Specifications Subject to Change Without Notice

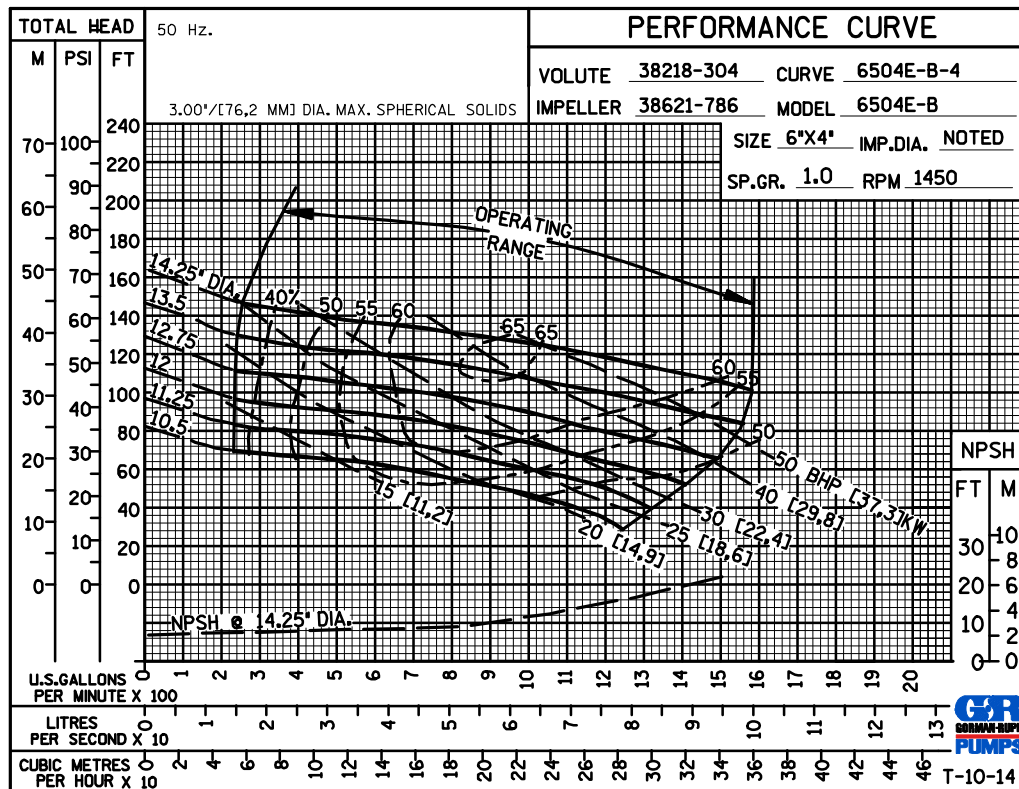


Turoteknikk Drift AS, Hildertunet 2, N-1341 Slependen, Norway
+47 67806300—mail@turoteknikk.no—www.turoteknikk.no

60 HERTZ
PERFORMANCE
BASED ON
WATER
TRIMMED
IMPELLER



50 HERTZ
PERFORMANCE
BASED ON
WATER
TRIMMED
IMPELLER



GORMAN-RUPP PUMPS

www.grpumps.com

Specifications Subject to Change Without Notice



Turoteknikk Drift AS, Hildertunet 2, N-1341 Slependen, Norway
+47 67806300—mail@turoteknikk.no—www.turoteknikk.no