

Gisle Krogseth

Il Fuoco dell'oblio

(The Fire of Oblivion)

Sinfonia per Banda

Copyright © 2006

Instrumentation

Piccolo

1. Flute

2. Flute

1. & 2. Oboe

English Horn (ad. lib.)

Clarinet in Eb

1. Clarinet in Bb

2. & 3. Clarinet in Bb

Bass Clarinet in Bb

Contrabass Clarinet in Eb

1. & 2. Bassoon

1. Contra-bassoon (if no Contrabass-Clarinet in Eb)

1. & 2. Alto Saxophone

Tenor Saxophone

Baritone Saxophone

1. Trumpet in Bb

2. & 3. Trumpet in Bb

4 Horns in F

1. & 2. Trombone

Bass Trombone

Euphonium

Tuba

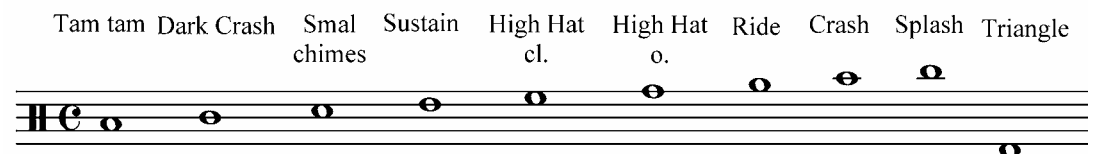
Double Bass (ad. lib.)

Timpani (5 timp: 30", 28", 25" & 2 st. 23" or 2 st. 25")

Marimba

Vibraphone

Cymbals:



Maracas (may be played by one of the optional instr.)

Drums (Snare Drum, Tom Tom & Bass Drum)

Piano (Tuba and /or String Double Bass if no piano)

On the Structure

The movement starts with an Introduction
This plays until measure 19 at A.
The Main Theme starts at measure 20
and bridges with 2 measures Interlude.
The 2. Theme starts at B, measure 48
and is slightly developed, before
The Development starts at C, measure 74.
It concludes in a cadenza for the percussion and tutti,
followed by a crescendo in an apocalyptical interlude
from measure 263 until 272 at E.
After a reprise of the Main Theme, the movement
concludes in a Coda from measure 291 at F.

The inspirations of the piece are formally the Sinfonias by
the great Baroque Masters such as J.B. Lully, G.F. Händel
and J.S. Bach, often referred to as the
“French Overtures”.

The musical language though is modern, with such
inspirations as contemporary, the modern classics,
poetry and jazz.

*Once you spill a glass of water
on the floor, you wring the wet rag in the sink.
The water eventually reaches the sea or evaporates in the sun.
When your water is spilt, do you float in the sea
or do you burn in the
Fire of Oblivion?*

**The Work was commissioned by and is dedicated to
Professor John M. Kennedy and
the Symphonic Wind Ensemble
of California State University of Los Angeles**

Durata approximately 10 minutes.