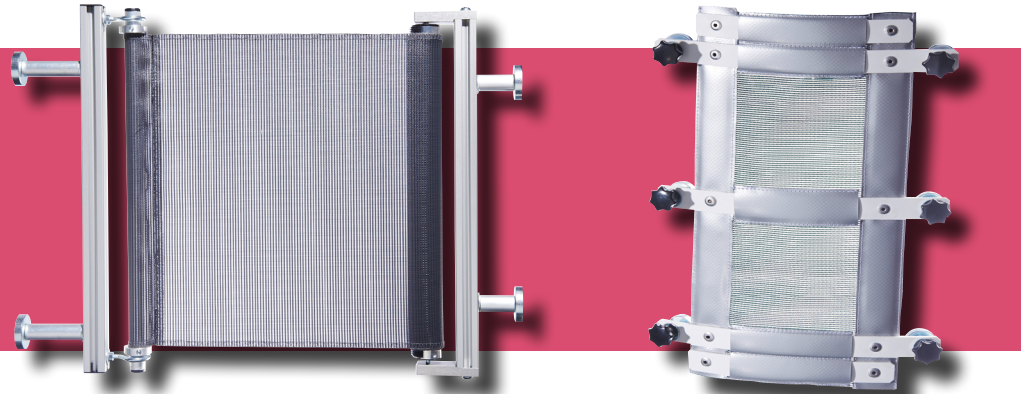




PRODUCT CATALOG COLLECTING-SYSTEMS FOR MOULDED PARTS

SAFE. CLEAN.
EFFICIENT.



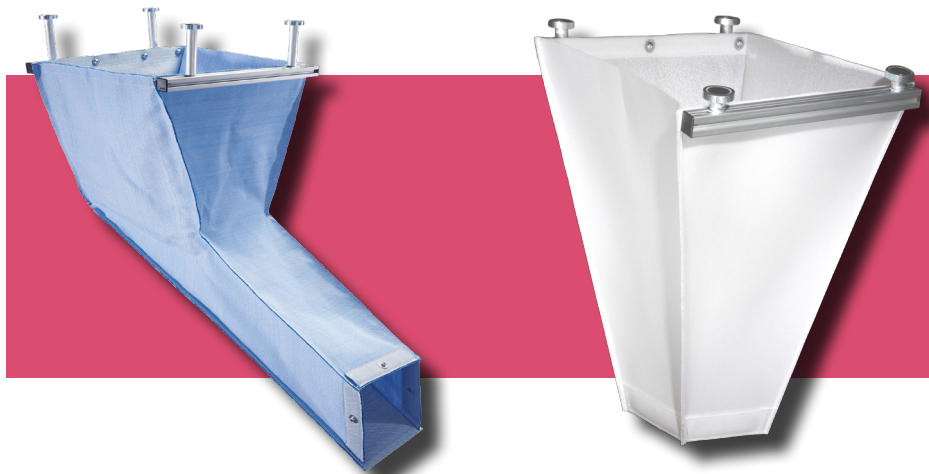


Side protection

Page 4-5

Collecting funnels

Page 6-14



Collecting chutes

Page 15-18

Material & Accessories

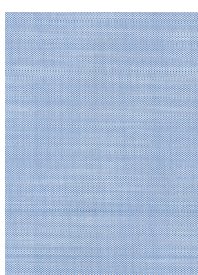
Page 3 & Page 19



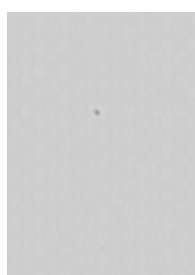
Material-no.	Temperature up to*	Antistatic	Slipping	Oil-resistant	Abrasion-proof	FDA-licensed
FM100.001	100°C	✓	✓			
FM100.002	80°C			✓	✓	
FM100.003	80°C			✓	✓	
FM100.004	Coating: 200°C Textile: 300°C				✓	
FM100.005	100°C	✓	✓		✓	✓
FM100.006	160°C		✓		✓	
FM100.007	80°C					
FM100.008	180°C					✓

* These temperature indications are valid for permanent load. Short term higher loads are possible.

Material for collecting funnels and collecting chutes:



Mat.-no.:
FM100.001
(PE, blue)



Mat.-no.:
FM100.002
(PVC, silver)



Mat.-no.:
FM100.003
(PVC, blue)



Mat.-no.:
FM100.004
(Kevlar,
silver/yellow)

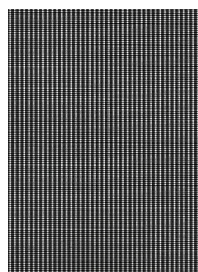


Mat.-no.:
FM100.005
(PP, white, FDA)



Mat.-no.:
FM100.006
(PBT, white)

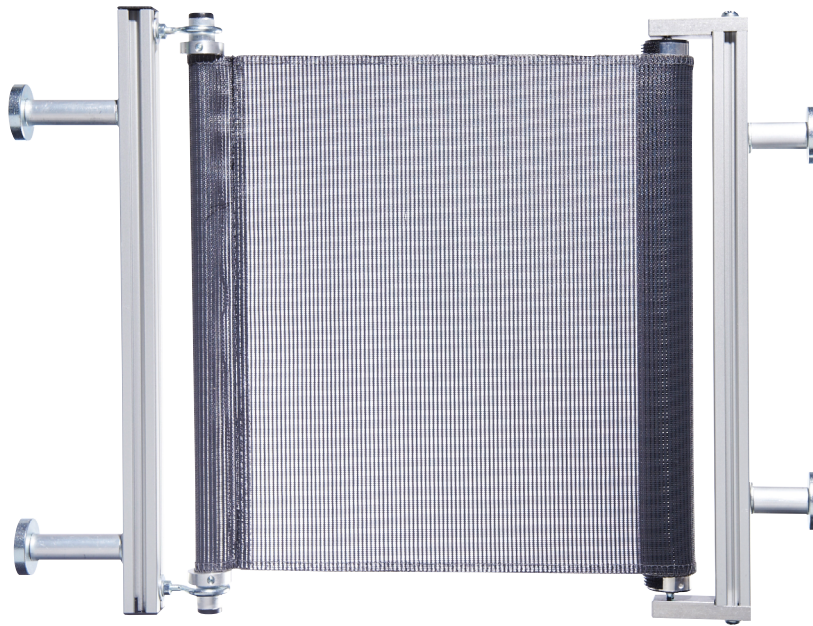
Material for side protection curtain:



Mat.-no.:
FM100.007
(PVDC,
anthracite)



Mat.-no.:
FM100.008
(PET, white,
FDA)



Product description

The side protection curtain RS is attached to the side of the tool or the clamping plates of an injection molding machine via strong permanent magnets. It catches moulded parts after demoulding to prevent the parts from contamination, reduces waste and keeps the environment of the machine clean. The materials used are view permeable and partially FDA approved.

Product features

- + Aluminum profiles as holder
- + Easy assembly via permanent magnets (adjustable in profile)
- + Sturdy, special material moving with the tool, view permeable, also with FDA approval
- + Roll-up mechanism for continuous operation (more than 8 million cycles tested in high-speed simulation)
- + Low space requirement between mould and bars
- + Material: FM100.007 (PVDC, anthracite); FM100.008 (PET, white, FDA)
- + Options: handles, side protection plates, (patented) floating bearing

Options

- + Handles: allows quicker and easier assembly of the curtain
- + Side protection plates: prevent the escape of small parts on the sides of the curtain
- + Floating bearing: increases life-time and simplifies assembly of the curtain



Product description

The folding curtain FS is attached to the side of the tool or the clamping plates of an injection molding machine via strong permanent magnets. It catches moulded parts after demoulding to prevent the parts from contamination, reduce waste and keeps the environment of the machine clean. The advantage of the folding curtain are the holding stripes. These can be placed individually to avoid tempering hoses or other obstacles. The folding curtain only requires enough space to the outside when folded to prevent damage.

Product features

- + Easy assembly via permanent magnets
- + Sturdy, special material, view permeable
- + Low space requirement between mould and bars
- + Adaptable to the tool or to tempering hoses by individual displacement of the holding stripes
- + Adapted number of holding stripes depending on the size of the tool and the folding curtain



Product description

The collecting funnel ATB-G with straight runout is mounted under the tool of an injection moulding machine via strong permanent magnets. It safely collects the moulded parts after demoulding and transfers them onto a conveyor belt or into a container below the machine. The funnel is movable and follows the tool. Optional equipment such as bafflers or a cut-out for conveyor belt ensures damage-free collection and waste reduction of the moulded parts.

Product features

- + Aluminum profiles as holder
- + Attached to the tool, the clamping plates or in the machine bed
- + Straight runout for transferring moulded parts onto a conveyor belt or into a container below the tool or the machine
- + Options: baffle(s), cut-out for conveyor belt
- + Depending on the application, different materials are available (see page 3 for material overview)



Product description

The collecting funnel ATB-S with diagonal runout is mounted under the tool of an injection moulding machine via strong permanent magnets. It safely collects the moulded parts after demoulding and transfers them onto a conveyor belt or into a container next to the machine. The funnel is movable and follows the tool. Optional equipment such as a baffle or a removable base ensures damage-free collection and waste reduction of the moulded parts.

Product features

- + Aluminum profiles as holder
- + Attached to the tool, the clamping plates or in the machine bed
- + Diagonal runout for transferring moulded parts onto a conveyor belt or into a container next to the machine
- + Options: baffle, removable base
- + Depending on the application, different materials are available (see page 3 for material overview)



Product description

The collecting funnel ATB-S90 with diagonal runout is, compared to the ATB-S, mounted 90° turned under the tool of an injection moulding machine via strong permanent magnets, in direction of the machine. It safely collects the moulded parts after demoulding and transfers them onto a conveyor belt or into a container below the machine. The funnel is movable and follows the tool. Optional equipment such as a baffle or a removable base ensures damage-free collection and waste reduction of the moulded parts.

Product features

- + Aluminum profiles as holder
- + Attached to the tool, the clamping plates or in the machine bed
- + Diagonal runout 90° turned for transferring moulded parts onto a conveyor belt or into a container below the machine
- + Options: baffle, removable base
- + Depending on the application, different materials are available (see page 3 for material overview)



Product description

The collecting funnel ATB-DS with two diagonal runouts is mounted under the tool of an injection moulding machine via strong permanent magnets. It safely collects and separates the moulded parts after demoulding and transfers them onto conveyor belts or into containers next to the machine. The funnel is movable and follows the tool. Optional equipment such as bafflers or a removable base ensures damage-free collection and waste reduction of the moulded parts.

Product features

- + Aluminum profiles as holder
- + Attached to the tool, the clamping plates or in the machine bed
- + Two diagonal runouts for transferring moulded parts onto conveyor belts or into containers next to the machine
- + Options: bafflers, removable base
- + Separates sprue and parts while falling
- + Depending on the application, different materials are available (see page 3 for material overview)



Product description

The collecting funnel ATB-DS90 with two diagonal, 90° turned runouts is mounted under the tool of an injection moulding machine via strong permanent magnets. It safely collects and separates the moulded parts after demoulding and transfers them onto conveyor belts or into containers under and next to the machine. The funnel is movable and follows the tool. Optional equipment such as bafflers or a removable base ensures damage-free collection and waste reduction of the moulded parts.

Product features

- + Aluminum profiles as holder
- + Attached to the tool, the clamping plates or in the machine bed
- + Two diagonal runouts for transferring moulded parts onto conveyor belts or into containers under and next to the machine
- + Options: bafflers, removable base
- + Separates sprue and parts while falling
- + Depending on the application, different materials are available (see page 3 for material overview)



Product description

The collecting funnel ATB-L with lamellas is mounted under the tool of an injection moulding machine via strong permanent magnets. It safely catches the moulded parts after demoulding and passes them onto a conveyor belt or into a container below the machine. The funnel is movable and follows the tool. Cooling or tempering hoses can be passed through the lamellas easily, without new complex placement of the hoses.

Product features

- + Aluminum profiles as holder
- + Attached to the tool, the clamping plates or in the machine bed
- + Cooling or tempering hoses can easily be passed through the lamellas
- + PVC-Material in two different colors (silver and blue / see page 3 for material overview)



Product description

The collecting funnel ATF with straight runout is mounted in the machine bed of an injection moulding machine via strong permanent magnets. It safely collects the moulded parts after demoulding and transfers them onto a conveyor belt or into a container below the machine. The funnel has a fixed frame. Optional equipment such as bafflers or mounting via brackets ensures damage-free collection and waste reduction of the moulded parts.

Product features

- + Fixed frame of aluminum profiles
- + Attached in the machine bed
- + Straight runout for transferring moulded parts onto a conveyor belt or into a container below the tool or the machine
- + Options: baffler(s), brackets
- + Depending on the application, different materials are available (see page 3 for material overview)



Product description

The collecting funnel ATF-D with two straight runouts is mounted in the machine bed of an injection moulding machine via strong permanent magnets. It safely collects and separates the moulded parts after demoulding and transfers them onto conveyor belts or into containers under the machine. The funnel has a fixed frame. Through the two runouts parts can directly be separated from sprue while falling.

Product features

- + Fixed frame of aluminum profiles
- + Attached in the machine bed
- + Two diagonal runouts for transferring moulded parts onto conveyor belts or into containers under the machine
- + Separates sprue and parts while falling
- + Options: distances or brackets
- + Depending on the application, different materials are available (see page 3 for material overview)



Product description

The collecting funnel ATF-L with lamellas is mounted in the machine bed of an injection moulding machine via strong permanent magnets. It safely catches the moulded parts after demoulding and passes them onto a conveyor belt or into a container below the machine. The funnel has a fixed frame. Cooling or tempering hoses can be passed through the lamellas easily, without new complex placement of the hoses.

Product features

- + Fixed frame of aluminum profiles
- + Attached in the machine bed
- + Cooling or tempering hoses can easily be passed through the lamellas
- + Options: distances or brackets
- + PVC-Material in two different colors (silver and blue / see page 3 for material overview)

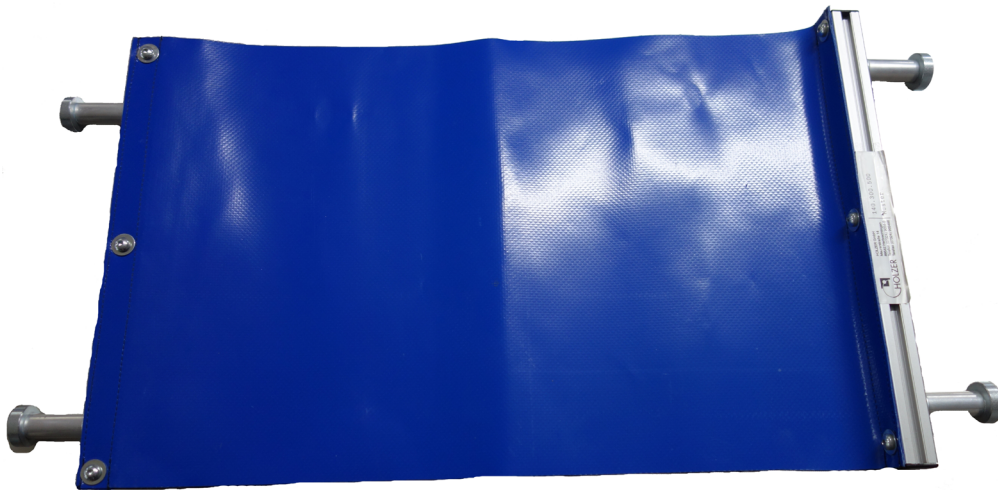


Product description

The collecting chute ARF is mounted in the machine bed of an injection moulding machine via strong permanent magnets and chains. It safely collects the moulded parts after demoulding and transfers them onto a conveyor belt or into a container next to the machine. The chute has a fixed frame. In addition the chute is constructed extra flat and space-saving.

Product features

- + Fixed frame of aluminum profiles
- + Attached on the tool or in the machine bed
- + Extra flat and space-saving construction
- + Depending on the application, different materials are available (see page 3 for material overview)



Product description

The collecting chute ARB is mounted on the clamping plates and the installed funnel of an injection moulding machine via strong permanent magnets. It safely collects the moulded parts after demoulding and transfers them into the installed funnel of the machine. The chute is moveable and follows the tool. This chute closes the gap between the tool and the installed funnel of the machine.

Product features

- + Aluminum profiles as holder
- + Attached on the clamping plates and the installed funnel of the machine
- + Extra flat and space-saving construction
- + Depending on the application, different materials are available (see page 3 for material overview)



Product description

The collecting chute ARH is mounted on the cross bar of an injection moulding machine via Velcro®. It safely catches the moulded parts after demoulding and transfers them into the installed funnel of the machine. In addition the chute is constructed extra flat and space-saving.

Product features

- + Mounted via Velcro® on the cross bar
- + Extra flat and space-saving construction
- + Depending on the application, different materials are available (see page 3 for material overview)



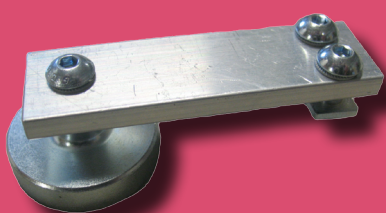
Product description

The lamella protection LS is mounted on the clamping plates of an injection moulding machine via strong permanent magnets. It safely catches the moulded parts after demoulding and transfers them into the installed funnel of the machine. Cooling or tempering hoses can be passed through the lamellas easily, without new complex placement of the hoses.

Product features

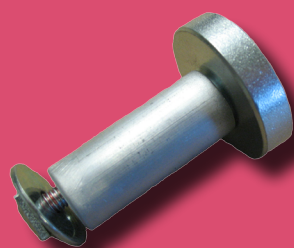
- + Aluminum profile as holder
- + Attached on the clamping plates of the machine
- + Cooling or tempering hoses can easily be passed through the lamellas
- + PVC-Material in two different colors (silver and blue / see page 3 for material overview)

Article-no.:	Designation
111.000.009	Bracket 70mm including magnet Ø32mm
111.000.014 A	Magnet with M5 thread and pin, Ø32mm
111.000.015 A	Magnet with M5 thread and pin, Ø25mm
111.000.114 A	Magnet with M6 thread and pin, Ø32mm
111.000.213 A	Magnet with screw hook, Ø25mm
111.000.214 A	Magnet with screw hook, Ø32mm
111.000.314 A	Magnet with M5 thread without pin, Ø32mm
111.000.046 Z	Distance 45 mm with threaded bar, slot nut and magnet Ø32mm
111.000.080	Mounting kit with chains and magnets with screw hook



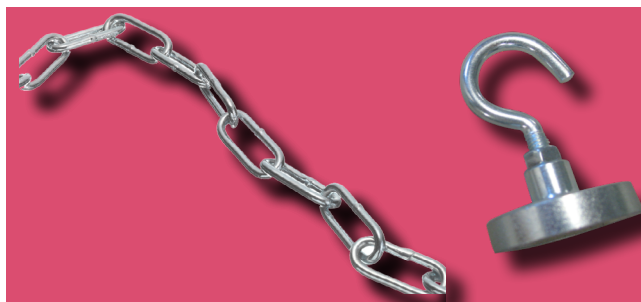
Bracket including magnet

Magnets



Distance including magnet

Chains and magnets with screw hook





Holzer GmbH
Maurerstraße 14
89542 Herbrechtingen
Fon: +49 7324 9654-0
Fax: +49 7324 9654-88
Mail: info@holzer-gmbh.com
www.holzer-gmbh.com